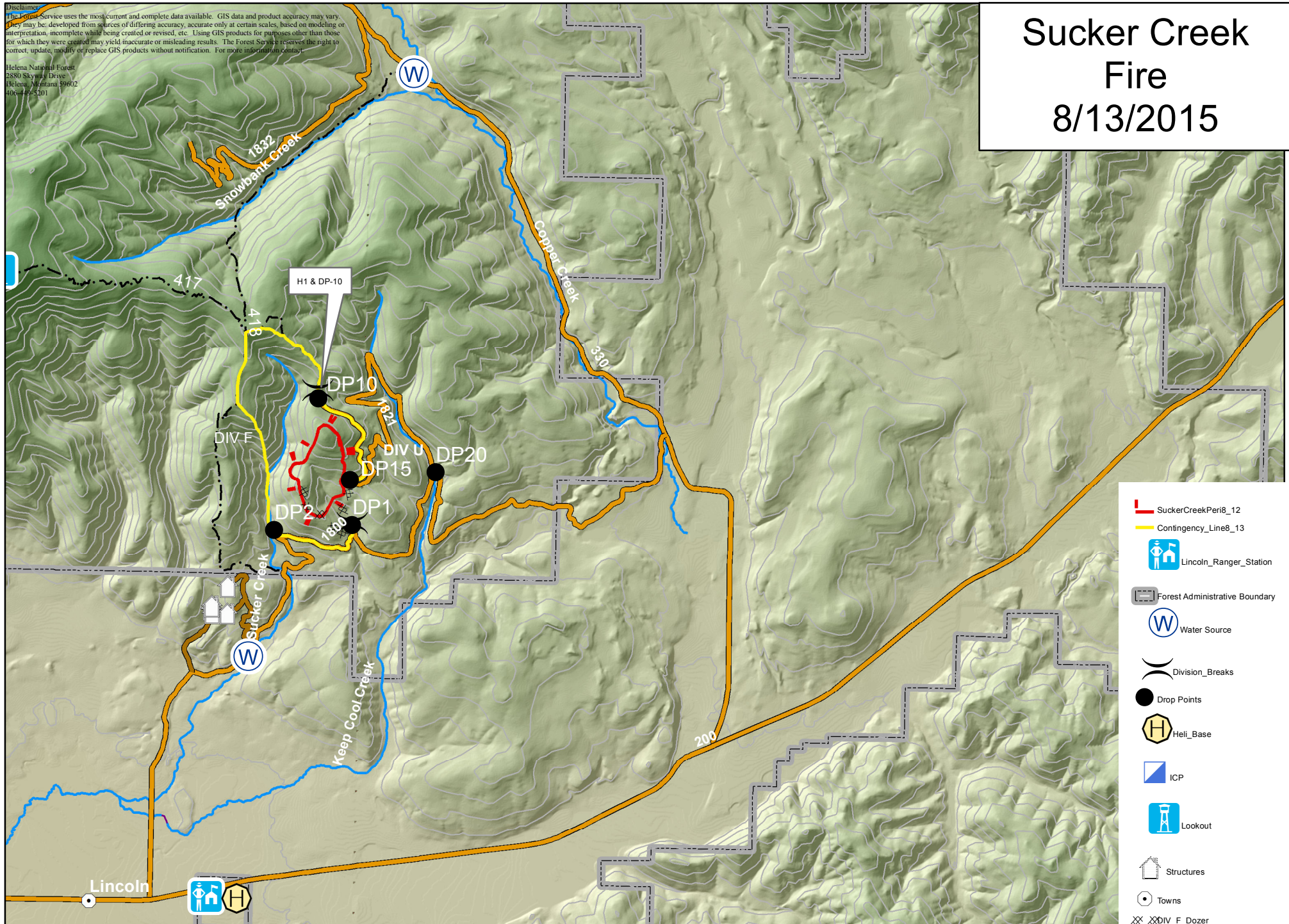


Sucker Creek Fire

8/13/2015

Disclaimer: The Forest Service uses the most current and complete data available. GIS data and product accuracy may vary. They may be developed from sources of differing accuracy, accurate only at certain scales, based on modeling or interpretation, incomplete while being created or revised, etc. Using GIS products for purposes other than those for which they were created may yield inaccurate or misleading results. The Forest Service reserves the right to correct, update, modify or replace GIS products without notification. For more information contact:

Helena National Forest
2880 Skyway Drive
Helena, Montana 59602
406-495-5201



- SuckerCreekPeri8_12
- Contingency_Line8_13
- Lincoln_Ranger_Station
- Forest Administrative Boundary
- Water Source
- Division_Breaks
- Drop Points
- Heli_Base
- ICP
- Lookout
- Structures
- Towns
- DIV_F_Dozer
- DIV_U_Dozer
- Roads