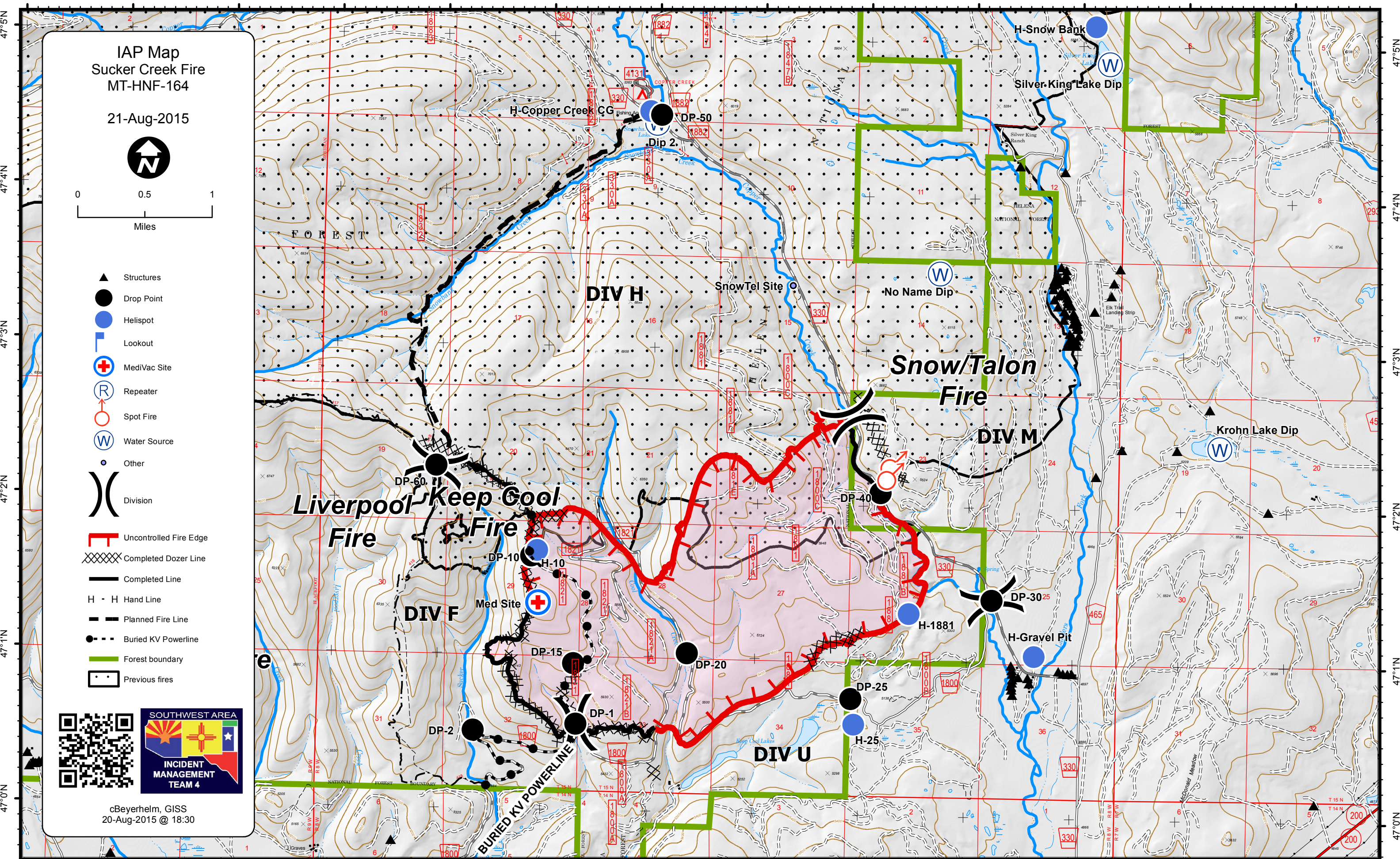


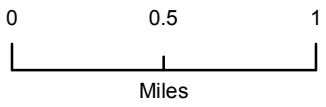
112°43'W 112°42'W 112°41'W 112°40'W 112°39'W 112°38'W 112°37'W 112°36'W 112°35'W 112°34'W 112°33'W 112°32'W 112°31'W



47°5'N 47°4'N 47°3'N 47°2'N 47°1'N 47°0'N

IAP Map Sucker Creek Fire MT-HNF-164

21-Aug-2015



- Structures
- Drop Point
- Helispot
- Lookout
- MediVac Site
- Repeater
- Spot Fire
- Water Source
- Other
- Division
- Uncontrolled Fire Edge
- Completed Dozer Line
- Completed Line
- H - H Hand Line
- Planned Fire Line
- Buried KV Powerline
- Forest boundary
- Previous fires



cBeyerhelm, GISS
20-Aug-2015 @ 18:30

112°42'W 112°41'W 112°40'W 112°39'W 112°38'W 112°37'W 112°36'W 112°35'W 112°34'W 112°33'W 112°32'W 112°31'W