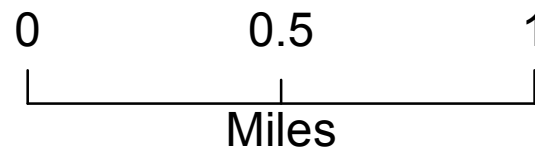


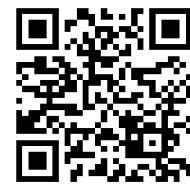
Operations Map
Sucker Creek Fire
MT-HNF-164

21-Aug-2015

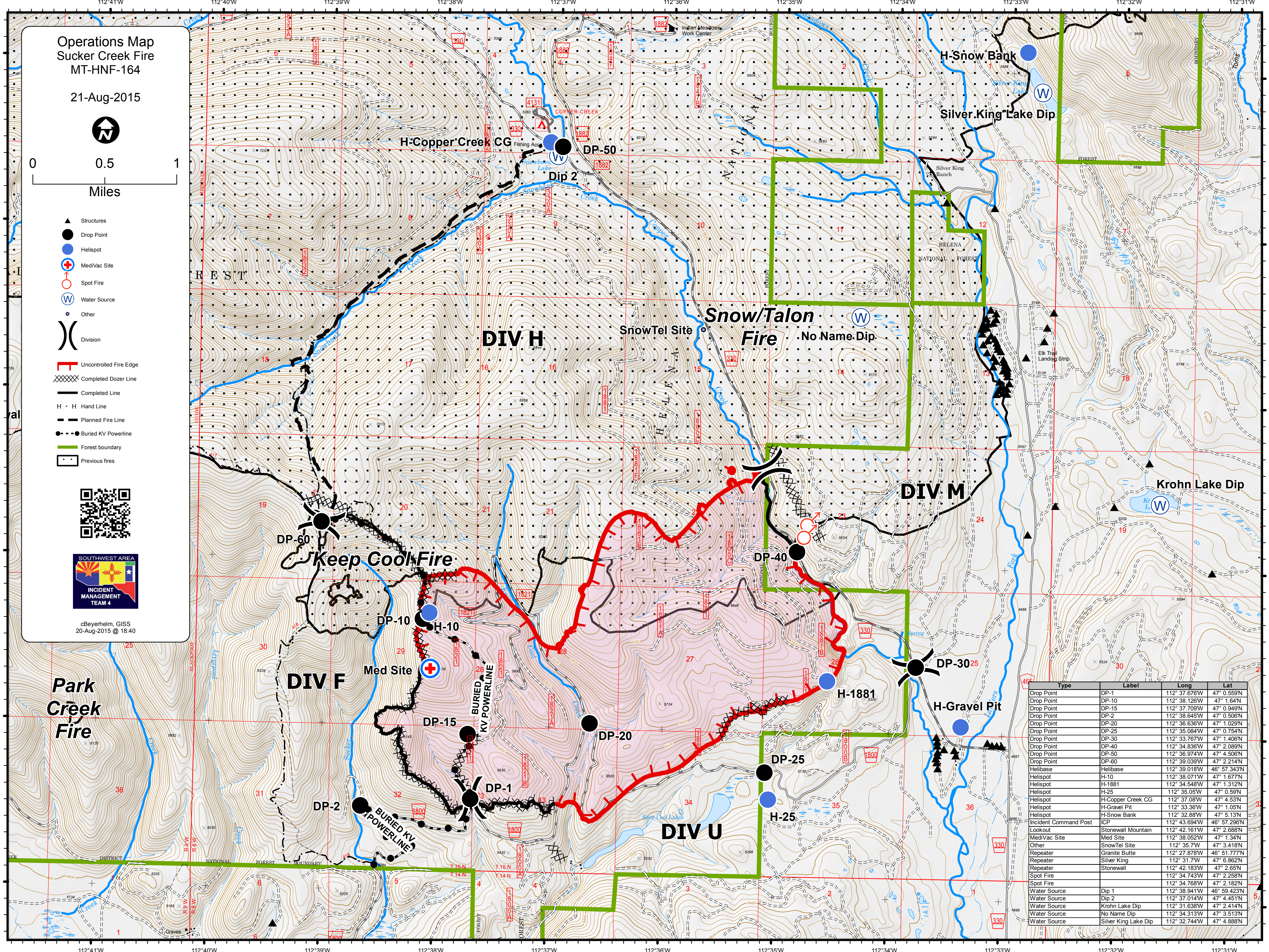


- Structures
- Drop Point
- Helispot
- MediVac Site
- Spot Fire
- Water Source
- Other
- Division

- Uncontrolled Fire Edge
- Completed Dozer Line
- Completed Line
- H - H Hand Line
- Planned Fire Line
- Buried KV Powerline
- Forest boundary
- Previous fires



cBeyerhelm, GIS
20-Aug-2015 @ 18:40



Type	Label	Long	Lat
Drop Point	DP-1	112° 37.676W	47° 0.559N
Drop Point	DP-10	112° 38.126W	47° 1.64N
Drop Point	DP-15	112° 37.709W	47° 0.949N
Drop Point	DP-2	112° 38.645W	47° 0.506N
Drop Point	DP-20	112° 36.636W	47° 1.029N
Drop Point	DP-25	112° 35.084W	47° 0.754N
Drop Point	DP-30	112° 33.767W	47° 1.406N
Drop Point	DP-40	112° 34.836W	47° 2.089N
Drop Point	DP-50	112° 36.974W	47° 4.506N
Drop Point	DP-60	112° 39.039W	47° 2.214N
Helibase	Helibase	112° 39.018W	46° 57.343N
Helispot	H-10	112° 37.087W	47° 1.677N
Helispot	H-1881	112° 34.548W	47° 1.312N
Helispot	H-25	112° 35.05W	47° 0.59N
Helispot	H-Copper Creek CG	112° 37.087W	47° 4.53N
Helispot	H-Gravel Pit	112° 33.36W	47° 1.05N
Helispot	H-Snow Bank	112° 32.88W	47° 5.13N
Incident Command Post	ICP	112° 43.694W	46° 57.296N
Lookout	Stonewall Mountain	112° 42.161W	47° 2.688N
MediVac Site	Med Site	112° 38.052W	47° 1.34N
Other	SnowTel Site	112° 35.7W	47° 3.418N
Repeater	Granite Butte	112° 27.878W	46° 51.777N
Repeater	Silver King	112° 31.7W	47° 6.862N
Repeater	Stonewall	112° 42.183W	47° 2.85N
Spot Fire		112° 34.743W	47° 2.258N
Spot Fire		112° 34.768W	47° 2.182N
Water Source	Dip 1	112° 38.941W	46° 59.423N
Water Source	Dip 2	112° 37.014W	47° 4.451N
Water Source	Krohn Lake Dip	112° 31.638W	47° 2.414N
Water Source	No Name Dip	112° 34.313W	47° 3.513N
Water Source	Silver King Lake Dip	112° 32.744W	47° 4.888N