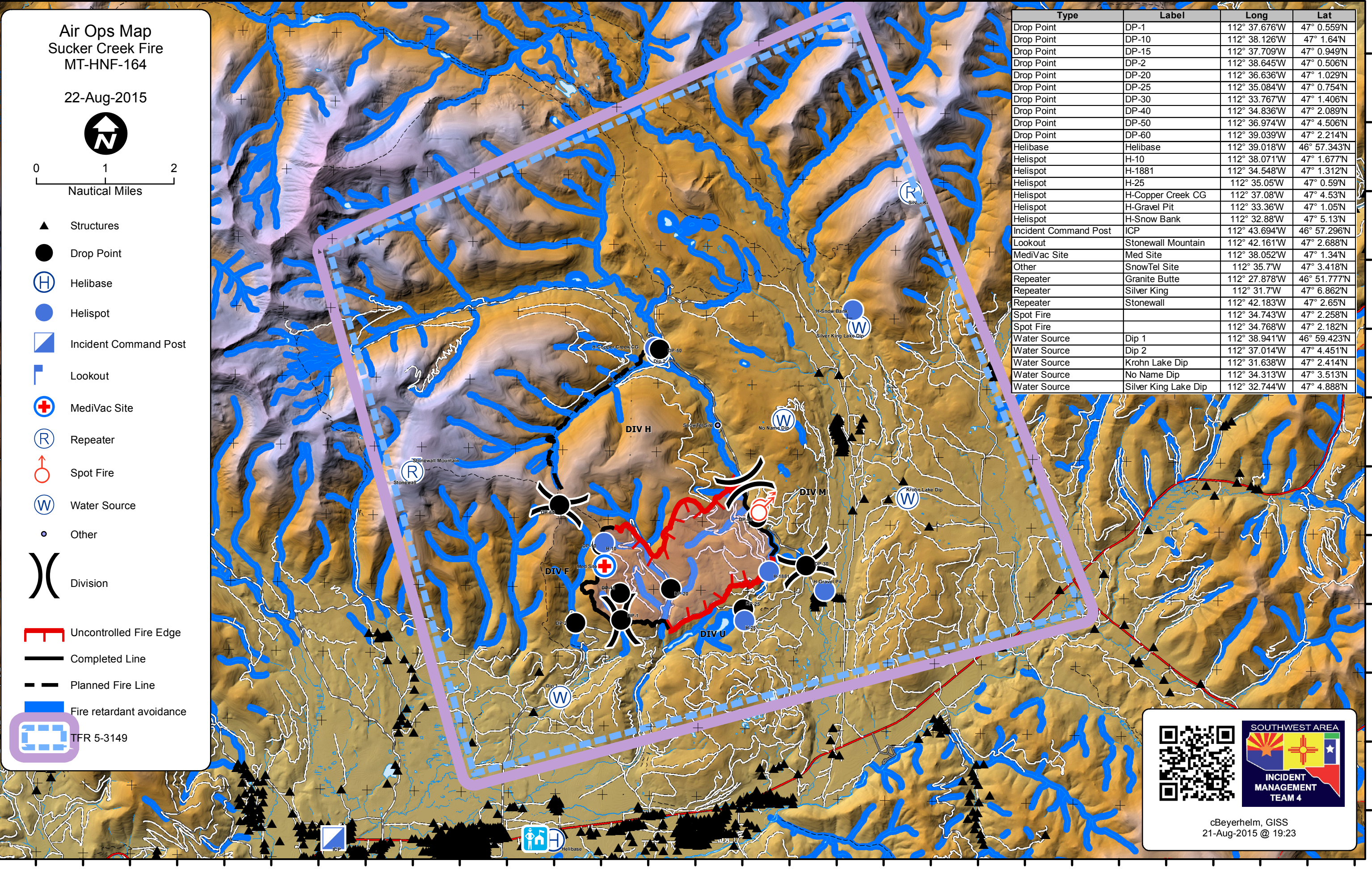


112°51'W 112°50'W 112°49'W 112°48'W 112°47'W 112°46'W 112°45'W 112°44'W 112°43'W 112°41'W 112°41'W 112°40'W 112°38'W 112°38'W 112°37'W 112°36'W 112°35'W 112°34'W 112°33'W 112°32'W 112°31'W 112°30'W 112°29'W 112°28'W 112°26'W 112°26'W 112°25'W 112°23'W 112°23'W

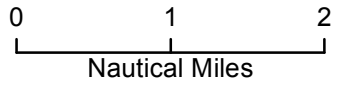
47°8'N
47°8'N
47°7'N
47°6'N
47°5'N
47°4'N
47°3'N
47°2'N
47°1'N
47°0'N
47°0'N
46°59'N
46°58'N
46°56'N

47°8'N
47°8'N
47°8'N
47°7'N
47°6'N
47°5'N
47°4'N
47°3'N
47°2'N
47°1'N
47°0'N
47°0'N
46°59'N
46°58'N



Air Ops Map
Sucker Creek Fire
MT-HNF-164

22-Aug-2015



- Structures
- Drop Point
- Helibase
- Helispot
- Incident Command Post
- Lookout
- MediVac Site
- Repeater
- Spot Fire
- Water Source
- Other
- Division
- Uncontrolled Fire Edge
- Completed Line
- Planned Fire Line
- Fire retardant avoidance
- TFR 5-3149

Type	Label	Long	Lat
Drop Point	DP-1	112° 37.676'W	47° 0.559'N
Drop Point	DP-10	112° 38.126'W	47° 1.64'N
Drop Point	DP-15	112° 37.709'W	47° 0.949'N
Drop Point	DP-2	112° 38.645'W	47° 0.506'N
Drop Point	DP-20	112° 36.636'W	47° 1.029'N
Drop Point	DP-25	112° 35.084'W	47° 0.754'N
Drop Point	DP-30	112° 33.767'W	47° 1.406'N
Drop Point	DP-40	112° 34.836'W	47° 2.089'N
Drop Point	DP-50	112° 36.974'W	47° 4.506'N
Drop Point	DP-60	112° 39.039'W	47° 2.214'N
Helibase	Helibase	112° 39.018'W	46° 57.343'N
Helispot	H-10	112° 38.071'W	47° 1.677'N
Helispot	H-1881	112° 34.548'W	47° 1.312'N
Helispot	H-25	112° 35.05'W	47° 0.59'N
Helispot	H-Copper Creek CG	112° 37.08'W	47° 4.53'N
Helispot	H-Gravel Pit	112° 33.36'W	47° 1.05'N
Helispot	H-Snow Bank	112° 32.88'W	47° 5.13'N
Incident Command Post	ICP	112° 43.694'W	46° 57.296'N
Lookout	Stonewall Mountain	112° 42.161'W	47° 2.688'N
MediVac Site	Med Site	112° 38.052'W	47° 1.34'N
Other	SnowTel Site	112° 35.7'W	47° 3.418'N
Repeater	Granite Butte	112° 27.878'W	46° 51.777'N
Repeater	Silver King	112° 31.7'W	47° 6.862'N
Repeater	Stonewall	112° 42.183'W	47° 2.65'N
Spot Fire		112° 34.743'W	47° 2.258'N
Spot Fire		112° 34.768'W	47° 2.182'N
Water Source	Dip 1	112° 38.941'W	46° 59.423'N
Water Source	Dip 2	112° 37.014'W	47° 4.451'N
Water Source	Krohn Lake Dip	112° 31.638'W	47° 2.414'N
Water Source	No Name Dip	112° 34.313'W	47° 3.513'N
Water Source	Silver King Lake Dip	112° 32.744'W	47° 4.888'N



cBeyerhelm, GISS
21-Aug-2015 @ 19:23

112°50'W 112°49'W 112°48'W 112°47'W 112°46'W 112°44'W 112°43'W 112°41'W 112°41'W 112°40'W 112°38'W 112°38'W 112°37'W 112°36'W 112°35'W 112°34'W 112°33'W 112°32'W 112°31'W 112°30'W 112°29'W 112°28'W 112°26'W 112°26'W 112°25'W 112°23'W 112°23'W