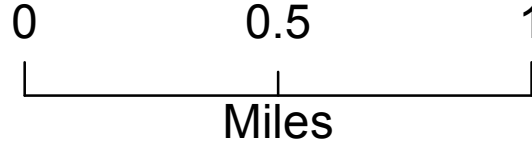


Operations Map
Sucker Creek Fire
MT-HNF-164

24-Aug-2015

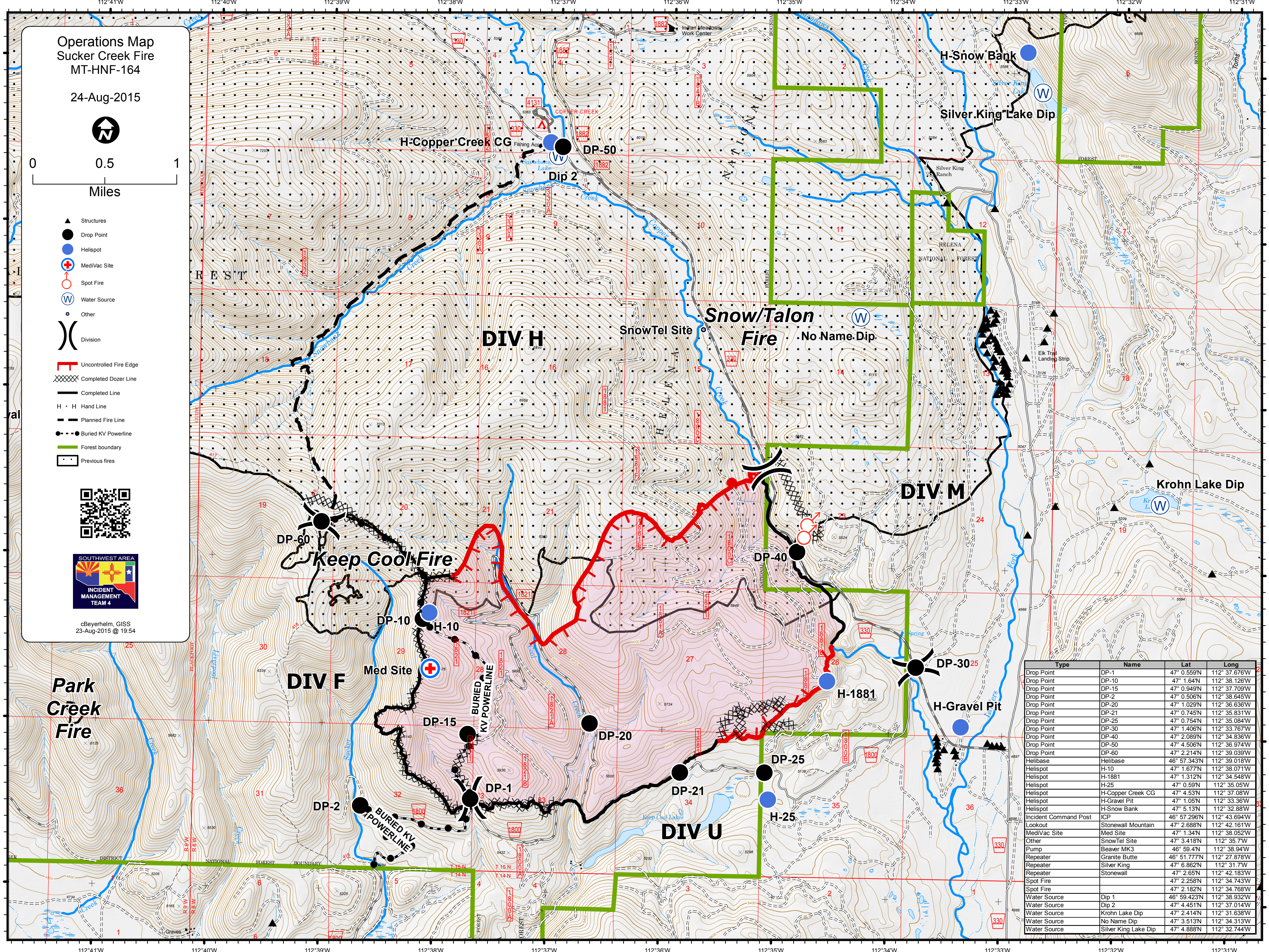


- ▲ Structures
- Drop Point
- Helispot
- ⊕ MediVac Site
- Spot Fire
- ⊙ Water Source
- Other
-) Division

- Uncontrolled Fire Edge
- XXXX Completed Dozer Line
- Completed Line
- H · H Hand Line
- - - Planned Fire Line
- · · Buried KV Powerline
- Forest boundary
- Previous fires



cBeyerhelm, GIS
23-Aug-2015 @ 19:54



| Type | Name | Lat | Long |
|-----------------------|----------------------|--------------|---------------|
| Drop Point | DP-1 | 47° 0.559'N | 112° 37.676'W |
| Drop Point | DP-10 | 47° 1.64'N | 112° 38.126'W |
| Drop Point | DP-15 | 47° 0.949'N | 112° 37.709'W |
| Drop Point | DP-20 | 47° 0.506'N | 112° 38.645'W |
| Drop Point | DP-21 | 47° 1.029'N | 112° 36.636'W |
| Drop Point | DP-25 | 47° 0.745'N | 112° 35.831'W |
| Drop Point | DP-30 | 47° 0.754'N | 112° 35.084'W |
| Drop Point | DP-35 | 47° 1.406'N | 112° 33.767'W |
| Drop Point | DP-40 | 47° 2.089'N | 112° 34.836'W |
| Drop Point | DP-50 | 47° 4.506'N | 112° 36.974'W |
| Drop Point | DP-60 | 47° 2.214'N | 112° 39.039'W |
| Helibase | Helibase | 46° 57.343'N | 112° 39.018'W |
| Helispot | H-10 | 47° 1.677'N | 112° 38.071'W |
| Helispot | H-1881 | 47° 1.312'N | 112° 34.548'W |
| Helispot | H-25 | 47° 0.59'N | 112° 35.05'W |
| Helispot | H-Copper Creek CG | 47° 4.53'N | 112° 37.08'W |
| Helispot | H-Gravel Pit | 47° 1.05'N | 112° 33.36'W |
| Helispot | H-Snow Bank | 47° 5.13'N | 112° 32.88'W |
| Incident Command Post | ICP | 46° 57.296'N | 112° 43.694'W |
| Lookout | Stonewall Mountain | 47° 2.688'N | 112° 42.161'W |
| MediVac Site | Med Site | 47° 1.34'N | 112° 38.052'W |
| Other | SnowTel Site | 47° 3.418'N | 112° 35.7'W |
| Pump | Beaver MK3 | 46° 59.4'N | 112° 38.94'W |
| Repeater | Granite Butte | 46° 51.777'N | 112° 27.878'W |
| Repeater | Silver King | 47° 6.862'N | 112° 31.7'W |
| Repeater | Stonewall | 47° 2.65'N | 112° 42.183'W |
| Spot Fire | Stonewall | 47° 2.258'N | 112° 34.743'W |
| Spot Fire | Spot Fire | 47° 2.182'N | 112° 34.768'W |
| Water Source | Dip 1 | 46° 59.423'N | 112° 38.932'W |
| Water Source | Dip 2 | 47° 4.451'N | 112° 37.014'W |
| Water Source | Krohn Lake Dip | 47° 2.414'N | 112° 31.638'W |
| Water Source | No Name Dip | 47° 3.513'N | 112° 34.313'W |
| Water Source | Silver King Lake Dip | 47° 4.888'N | 112° 32.744'W |