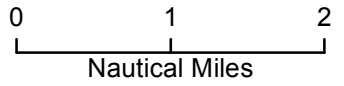


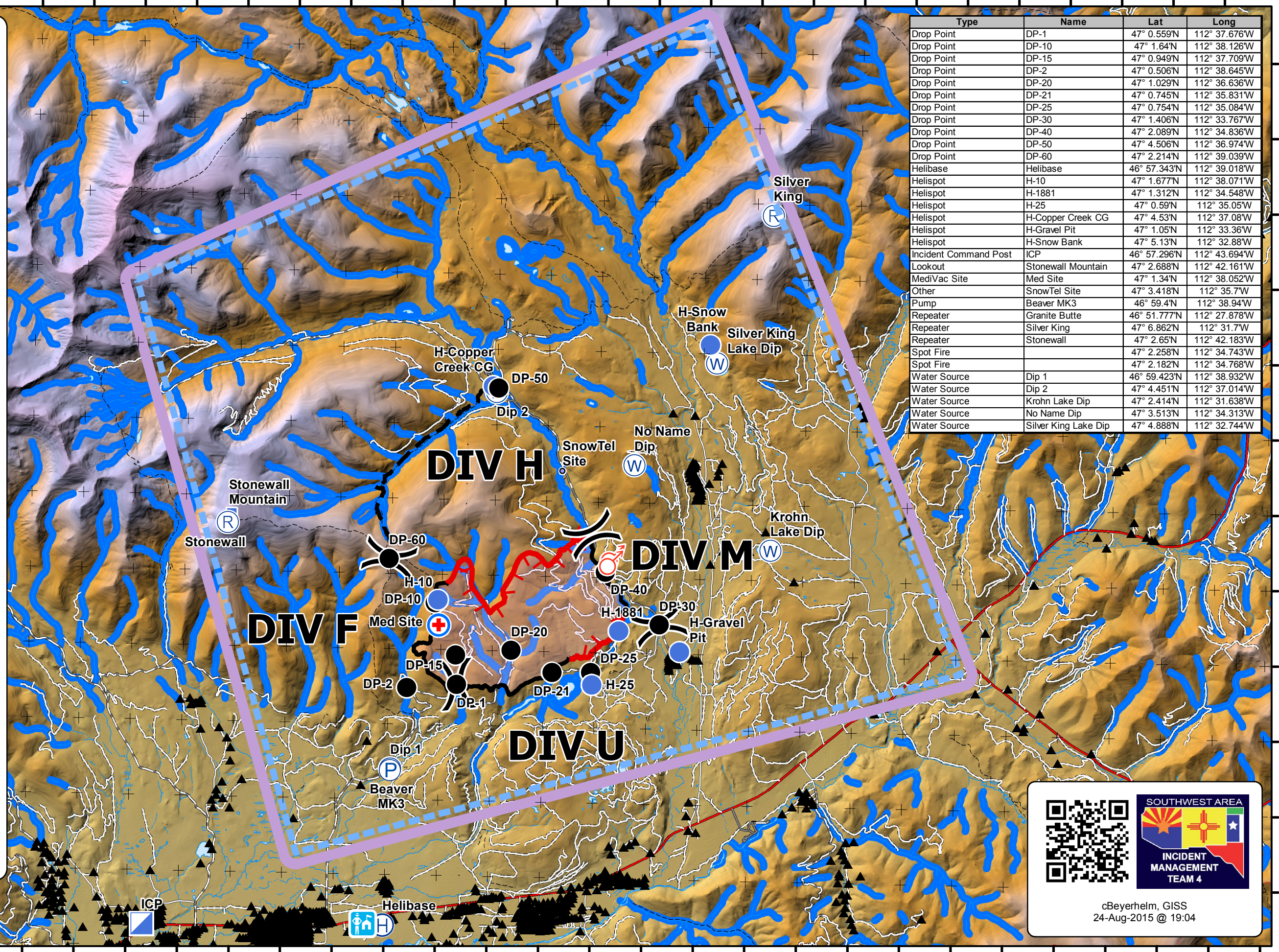
**Air Ops Map**  
**Sucker Creek Fire**  
**MT-HNF-164**

25-Aug-2015



- Structures
- Drop Point
- Helibase
- Helispot
- Incident Command Post
- Lookout
- MediVac Site
- Pump
- Repeater
- Spot Fire
- Water Source
- Other
- Division
- Uncontrolled Fire Edge
- Completed Line
- Planned Fire Line
- Fire retardant avoidance
- TFR 5-3149

| Type                  | Name                 | Lat          | Long          |
|-----------------------|----------------------|--------------|---------------|
| Drop Point            | DP-1                 | 47° 0.559'N  | 112° 37.676'W |
| Drop Point            | DP-10                | 47° 1.64'N   | 112° 38.126'W |
| Drop Point            | DP-15                | 47° 0.949'N  | 112° 37.709'W |
| Drop Point            | DP-2                 | 47° 0.506'N  | 112° 38.645'W |
| Drop Point            | DP-20                | 47° 1.029'N  | 112° 36.636'W |
| Drop Point            | DP-21                | 47° 0.745'N  | 112° 35.831'W |
| Drop Point            | DP-25                | 47° 0.754'N  | 112° 35.084'W |
| Drop Point            | DP-30                | 47° 1.406'N  | 112° 33.767'W |
| Drop Point            | DP-40                | 47° 2.089'N  | 112° 34.836'W |
| Drop Point            | DP-50                | 47° 4.506'N  | 112° 36.974'W |
| Drop Point            | DP-60                | 47° 2.214'N  | 112° 39.039'W |
| Helibase              | Helibase             | 46° 57.343'N | 112° 39.018'W |
| Helispot              | H-10                 | 47° 1.677'N  | 112° 38.071'W |
| Helispot              | H-1881               | 47° 1.312'N  | 112° 34.548'W |
| Helispot              | H-25                 | 47° 0.59'N   | 112° 35.05'W  |
| Helispot              | H-Copper Creek CG    | 47° 4.53'N   | 112° 37.08'W  |
| Helispot              | H-Gravel Pit         | 47° 1.05'N   | 112° 33.36'W  |
| Helispot              | H-Snow Bank          | 47° 5.13'N   | 112° 32.88'W  |
| Incident Command Post | ICP                  | 46° 57.296'N | 112° 43.694'W |
| Lookout               | Stonewall Mountain   | 47° 2.688'N  | 112° 42.161'W |
| MediVac Site          | Med Site             | 47° 1.34'N   | 112° 38.052'W |
| Other                 | SnowTel Site         | 47° 3.418'N  | 112° 35.7'W   |
| Pump                  | Beaver MK3           | 46° 59.4'N   | 112° 38.94'W  |
| Repeater              | Granite Butte        | 46° 51.777'N | 112° 27.878'W |
| Repeater              | Silver King          | 47° 6.862'N  | 112° 31.7'W   |
| Repeater              | Stonewall            | 47° 2.65'N   | 112° 42.183'W |
| Spot Fire             |                      | 47° 2.258'N  | 112° 34.743'W |
| Spot Fire             |                      | 47° 2.182'N  | 112° 34.768'W |
| Water Source          | Dip 1                | 46° 59.423'N | 112° 38.932'W |
| Water Source          | Dip 2                | 47° 4.451'N  | 112° 37.014'W |
| Water Source          | Krohn Lake Dip       | 47° 2.414'N  | 112° 31.638'W |
| Water Source          | No Name Dip          | 47° 3.513'N  | 112° 34.313'W |
| Water Source          | Silver King Lake Dip | 47° 4.888'N  | 112° 32.744'W |



cBeyerhelm, GISS  
 24-Aug-2015 @ 19:04