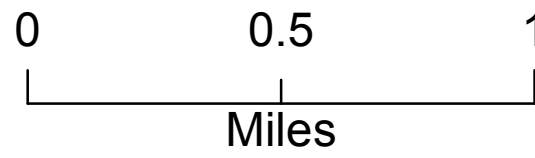


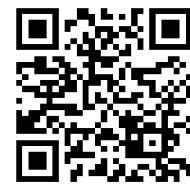
Operations Map
Sucker Creek Fire
MT-HNF-164

As of 26-Aug-2015

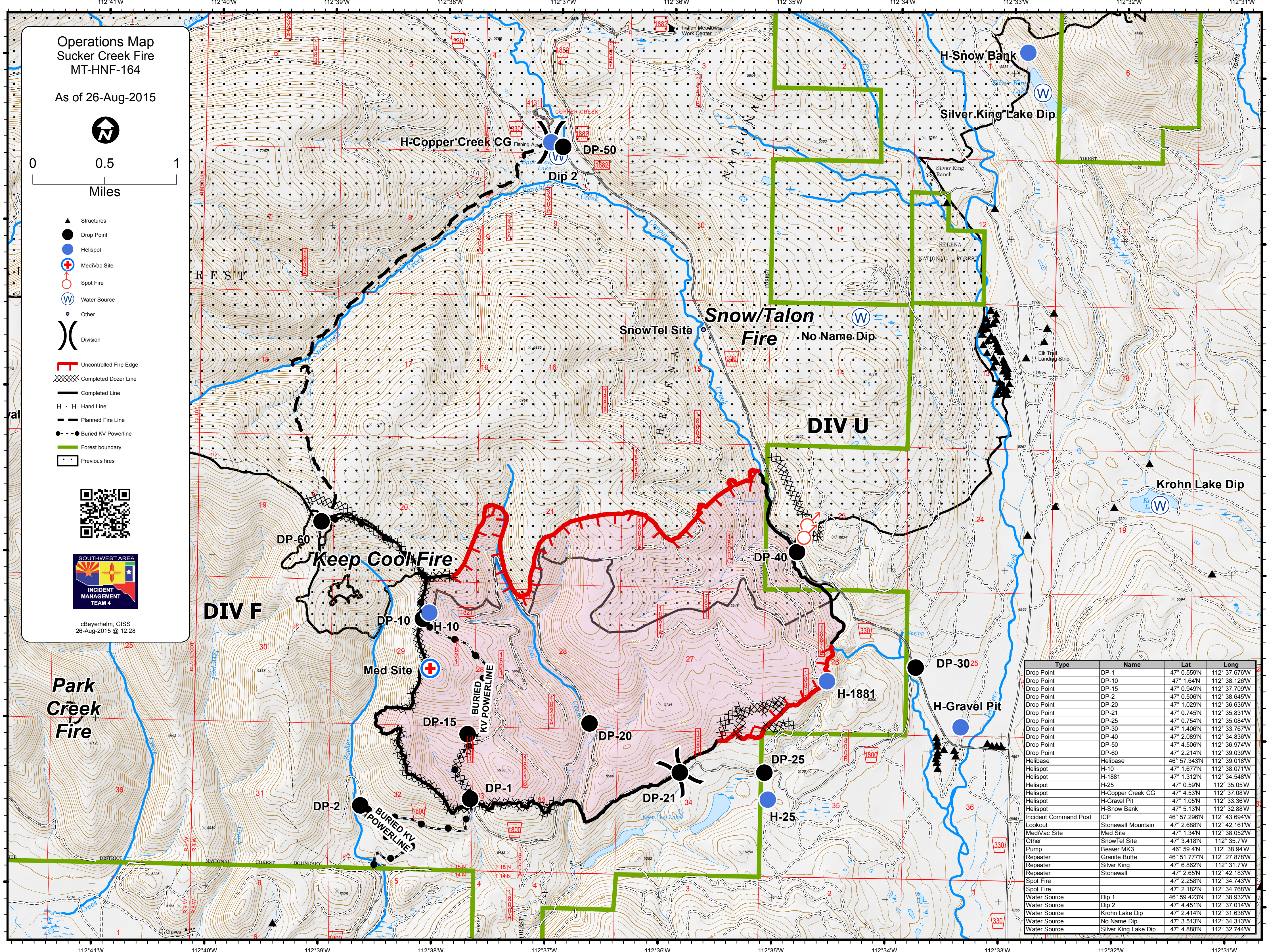


- Structures
- Drop Point
- Helispot
- MediVac Site
- Spot Fire
- Water Source
- Other
- Division

- Uncontrolled Fire Edge
- Completed Dozer Line
- Completed Line
- H - H Hand Line
- Planned Fire Line
- Buried KV Powerline
- Forest boundary
- Previous fires



cBeyerhelm, GIS
26-Aug-2015 @ 12:28



Type	Name	Lat	Long
Drop Point	DP-1	47° 0.559'N	112° 37.676'W
Drop Point	DP-10	47° 1.64'N	112° 38.126'W
Drop Point	DP-15	47° 0.949'N	112° 37.709'W
Drop Point	DP-2	47° 0.506'N	112° 38.645'W
Drop Point	DP-20	47° 1.029'N	112° 36.636'W
Drop Point	DP-21	47° 0.745'N	112° 35.831'W
Drop Point	DP-25	47° 0.754'N	112° 35.084'W
Drop Point	DP-30	47° 1.406'N	112° 33.767'W
Drop Point	DP-40	47° 2.089'N	112° 34.836'W
Drop Point	DP-50	47° 4.506'N	112° 36.974'W
Drop Point	DP-60	47° 2.214'N	112° 39.039'W
Helibase	Helibase	46° 57.343'N	112° 39.018'W
Helispot	H-10	47° 1.677'N	112° 38.071'W
Helispot	H-1881	47° 1.312'N	112° 34.548'W
Helispot	H-25	47° 0.59'N	112° 35.05'W
Helispot	H-Copper Creek CG	47° 4.53'N	112° 37.08'W
Helispot	H-Gravel Pit	47° 1.05'N	112° 33.36'W
Helispot	H-Snow Bank	47° 5.13'N	112° 32.88'W
Incident Command Post	ICP	46° 57.296'N	112° 43.694'W
Lookout	Stonewall Mountain	47° 2.688'N	112° 42.161'W
MediVac Site	Med Site	47° 1.34'N	112° 38.052'W
Other	SnowTel Site	47° 3.418'N	112° 35.7'W
Pump	Beaver MK3	46° 59.4'N	112° 38.94'W
Repeater	Granite Butte	46° 51.777'N	112° 27.878'W
Repeater	Silver King	47° 6.862'N	112° 31.7'W
Repeater	Stonewall	47° 2.65'N	112° 42.183'W
Spot Fire	Spot Fire	47° 2.258'N	112° 34.743'W
Spot Fire	Spot Fire	47° 2.182'N	112° 34.768'W
Water Source	Dip 1	46° 59.423'N	112° 38.932'W
Water Source	Dip 2	47° 4.451'N	112° 37.014'W
Water Source	Krohn Lake Dip	47° 2.414'N	112° 31.638'W
Water Source	No Name Dip	47° 3.513'N	112° 34.313'W
Water Source	Silver King Lake Dip	47° 4.888'N	112° 32.744'W