



**SW Area Management Team #4**  
***SUCKER CREEK FIRE***  
**INCIDENT ACTION PLAN**



14. WEATHER IS GETTING HOTTER AND  
DRIER

**Day Operations**  
**Thursday, August 20**

MT-HNF-000164

P1J1AW15

**0700-2100**



## INCIDENT OBJECTIVES (ICS 202)

<b>1. Incident Name:</b>		<b>2. Operational Period:</b>	
SUCKER CREEK		Date/Time From: 08/20/2015 0700      THU	Date/Time To: 08/20/2015 2100      THU
<b>3. Objective(s):</b>			
Incident Objectives:  Identify and execute the options that balance safety with the highest probability of success maintaining fire off of private lands and protect infrastructure at trailheads.			
Tactical Objectives:  Minimize fire size through aggressive initial attack while providing for firefighter and public safety. Support Local Agencies with possible evacuations of threatened structures.			
<b>4. Operational Period Command Emphasis:</b>			
Incident Requirements:  The highest priority is to protect the safety of fire personnel and to protect human life followed by the protection of structures. Ensure LCES is known and understood by everyone, and contingencies and trigger points for disengagement are developed and followed. Reflect commitment to the 10 Standard Fire Orders and 18 Watchout Situations in all planned actions.  Any retardant use on the Sucker Creek Fire will observe retardant avoidance areas unless there is direct threat to human life.  Ensure that relationships are maintained and enhanced with private land owners in the fire area, Helena NF personnel, elected officials, and other agencies involved in the fire effort.  Maintain a positive and inclusive workplace where all employees are valued and treated with dignity, respect and courtesy.			
<b>General Situational Awareness:</b>			
<b>5. Site Safety Plan Required?</b> Yes <input type="checkbox"/> No <input checked="" type="checkbox"/>			
<b>Approved Site Safety Plan(s) Located at:</b>			
<b>6. Incident Action Plan</b> (the items checked below are included in this Incident Action Plan):			
<input checked="" type="checkbox"/> ICS 202	<input type="checkbox"/> ICS 207	Other Attachments:	
<input checked="" type="checkbox"/> ICS 203	<input type="checkbox"/> ICS 208	<input type="checkbox"/>	_____
<input checked="" type="checkbox"/> ICS 204	<input checked="" type="checkbox"/> ICS 220	<input type="checkbox"/>	_____
<input checked="" type="checkbox"/> ICS 205	<input checked="" type="checkbox"/> Map/Chart	<input type="checkbox"/>	_____
<input type="checkbox"/> ICS 205A	<input type="checkbox"/> Weather Forecast/Tides/Currents	<input type="checkbox"/>	_____
<input checked="" type="checkbox"/> ICS 206			
<b>7. Prepared by:</b>		Position/Title: <i>PSCZ</i>	Signature: <i>Charles Helan</i>
<b>8. Approved by Incident Commander:</b>		Name: <i>Alan Sinclair</i>	Signature: <i>[Signature]</i>
ICS 202	IAP Page	Date/Time: <i>8/19/15 2030</i>	

## ORGANIZATION ASSIGNMENT LIST (ICS 203)

<b>1. Incident Name:</b>		<b>2. Operational Period:</b>	
SUCKER CREEK		Date/Time From: 08/20/2015 0700	Date/Time To: 08/20/2015 2100
		THU	THU
<b>3. Incident Commander(s) and Command Staff:</b>		<b>SECURITY UNIT</b>	
IC/UC	DAVID BALES	<b>FOOD UNIT</b>	
DEPUTY	ALAN SINCLAIR	LARRY FALCON (T)	
SAFETY OFFICER	MARK D SHIERY	<b>7. Operations Section:</b>	
INFORMATION OFFICER	WILLIAM C MORSE C. BIRKLAND	OPS SECTION CHIEF	MYRON G WICKHAM BROOKS BAKER
LIAISON OFFICER	GORDON WIGMAN	DEPUTY OPS SECTION CHIEF	JEFF THUMM (T) RYAN WHITEAKER (T)
<b>4. Agency/Organization Representative(s):</b>		DAY OPS SECTION CHIEF	
Agency/Organization	Name	NIGHT OPS SECTION CHIEF	
RESOURCE ADVISOR	DAVE CALLERY	PLANNING OPS	
LEWIS & CLARK COUNTY	SHERIFF LEO DUTTON	STAGING AREA	
LEWIS & CLARK COUNTY	SGT KEVIN WRIGHT		
USFS	MICHAEL STANSBERRY DR	DIVISION/GROUP	F
DNRC	KRISTIN BAKER-DICKERSON		EDDIE BACA DAVE ZORTMAN (T)
<b>5. Planning Section:</b>		DIVISION/GROUP	U
CHIEF	CHUCK NELSON		RALPH LUCAS BRANDON ALLEN (T)
DEPUTY	ED HIATT (T)	DIVISION/GROUP	M
RESOURCES UNIT	BILL STAFFORD HEATHER GONZALES (T)		ELLIOT PICKETT B. SCHROEDER (T)
SITUATION UNIT	JEFFREY C HINK	DIVISION/GROUP	H
DOCUMENTATION UNIT			BARRY GREEN
DEMOBILIZATION UNIT	BILL STAFFORD	<b>7b. Air Operations Branch:</b>	
FIRE BEHAVIOR ANALYST	ROBB BERRY	AIR OPS BRANCH DIRECTOR	STEPHEN M JENNER
HUMAN RESOURCE SPECIALIST		AIR ATTACK SUPERVISOR	DAVE CORYN BRIAN PEARSON
TRAINING SPECIALIST		AIR SUPPORT SUPERVISOR	CHARLIE NIXON
GIS SPECIALIST	CARL D BEYERHELM	HELICOPTER COORDINATOR	
COMPUTER SPECIALIST	DONAVAN ALBERT COLETTE MANHEIM (T)	AIR TANKER COORDINATOR	
INCIDENT METEOROLOGIST	JACK MESSICK	<b>8. Finance/Administration Section:</b>	
<b>6. Logistics Section:</b>		CHIEF	SHANNON KELLY LOUISE FAUSTINI (T)
CHIEF	BEN GARCIA	DEPUTY	
DEPUTY	MICHAEL G PAYNE	TIME UNIT	TINA DILLAHUNTY
SUPPLY UNIT	DONALD H YEE	PROCUREMENT UNIT	ALAN J ZERO
FACILITIES UNIT	TOM DAUENHAUER MARK DEGIORGIO (T)	COMPENSATION UNIT	PATRICIA KITTMILLER
GROUND SUPPORT UNIT	ED QUINN MIKE STRESS	COST UNIT	
COMMUNICATIONS UNIT	MICHAEL HANNEMANN MATT TURNER (T)		
MEDICAL UNIT	DAN NEARY DUANE DECK		
<b>9. Prepared By:</b>	Name: <i>Stomalen</i>	Position/Title: <i>RES (T)</i>	Signature:
ICS 203	IAP Page	Date/Time: <i>8-19-2015 20:45</i>	

*Fire Weather Forecast*

FORECAST NO: 4  
PREDICTION FOR: DAYSHIFT

NAME OF FIRE: Sucker Creek MT-HNF-164  
UNIT: Lincoln RD

SHIFT DATE: 20 August 2015

SIGNED: *J. Messing*

TIME AND DATE  
FORECAST ISSUED: 2100 / 19 Aug 15

Incident Meteorologist

WEATHER DISCUSSION: High pressure will continue through at least Friday afternoon. The air will continue to warm and dry, with some lower elevation humidity reaching the upper teens. A storm coming in for Friday night will mean increasing winds for Friday afternoon.

WEATHER FORECAST:

WEATHER: Sunny, except for smoky conditions during the morning.  
TEMPERATURES: Ridge highs 68 to 76. Valley highs 74 to 82.  
HUMIDITY: Ridge minimum 20 to 28 percent. Valley minimum 17 to 25 percent.  
20 FT WINDS:

RIDGETOP - West 8 to 16 mph gusts to 24 mph, by 1200 increasing to 14 to 20 mph gusts to 38 mph.

SLOPE/VALLEY - Southwest 6 to 12 mph gusts to 18 mph, by 1200 becoming west 4 to 10 mph gusts to 18 mph. By 1500, valley wind becoming west 8 to 16 mph gusts to 30 mph. Keep Cool Creek canyon wind down valley 1 to 5 mph in the morning, by 1200 becoming similar to other valley wind.

HAINES INDEX: 3 Very Low.

LIGHTNING ACTIVITY LEVEL: 1.

STABILITY/INVERSION: Weakly stable, inversion breaking by 1000.

OUTLOOK FOR TONIGHT: Clear, by 0200 becoming partly cloudy. Low temperatures: Ridges 42 to 50. Valleys 40 to 48. Maximum humidity: Ridges 82 to 88 percent. Valleys 86 to 92 percent. Ridge wind southwest 8 to 16 mph gusts to 24 mph. Valley wind southwest 6 to 12 mph gusts to 18 mph.


OUTLOOK FOR FRIDAY: Partly cloudy. A slight chance of showers after 1500. High temperatures: Ridges 64 to 70. Valleys 68 to 74. Minimum humidity: Ridges 22 to 30 percent. Valleys 20 to 26 percent. Ridge wind southwest 10 to 20 mph gusts to 38 mph. Valley wind 8 to 18 mph gusts to 34 mph.

EXTENDED FORECAST: Friday night to Saturday morning: Mostly cloudy with a chance of showers. Windy with southwest wind 25 to 35 mph gusts to 45 mph, shifting to northwest before midnight. Lows 40 to 48. Saturday afternoon: Mostly cloudy. Highs 56 to 66. North to northeast wind 5 to 15 mph gusts to 25 mph. Much higher humidity. Sunday and Monday: Mostly clear. Southeast to south wind 5 to 15 mph gusts to 35 mph, becoming stronger on Monday afternoon. Lows 36 to 46, warming on Monday. Highs 68 to 78, even warmer on Monday afternoon. Humidity much lower than Saturday.

OBSERVATIONS / SUNRISE-SUNSET: Sunrise: 0633 Sunset: 2035

Location/Elevation:	Observations from Wednesday				
	Low Temp:	High Temp:	Max. RH	Min. RH	Precipitation
Lincoln RAWS(4597 ft elevation)	32	79	97%	25%	0.00
			%	%	

## FIRE BEHAVIOR FORECAST

<b>FORECAST NUMBER:</b> 5	<b>TYPE OF FIRE:</b> Wildfire
<b>FIRE NAME:</b> Sucker Creek	<b>OPERATIONAL PERIOD:</b> 8/20/2015, Day
<b>DATE ISSUED:</b> 8/19/2015	<b>TIME ISSUED:</b> 2100
<b>UNIT:</b> MT-HNF-000164	<b>SIGNED:</b> 
	<b>Prepared By:</b> Robb Beery, FBAN (928) 595-0442

### WEATHER SUMMARY:

**Today:** Clear, Min. RH 20-28%, Temp 68-76, Wind W 14-20 gusts to 40, Haines 3, LAL 1

**Tonight:** Partly Cloudy, Max. RH 82-88%, Temp 38-46, Winds SW 8-16 gusts to 24, may blow all night.

### FIRE BEHAVIOR

#### GENERAL:

This area had minimal snowpack this winter which means that the heavy dead fuels are very dry (1000hr fuels 15%) they will consume completely. The fine fuels will have minimal if any fire activity, burn out's will likely only burn the heavy dead fuels in the jackpots. Heads up for the beetle kill patches, they will burn very intensely and with slope or wind have rapid movement. The area should be smoked out all day from fires in Idaho.

#### SPECIFIC:

**Watch for the canyon influence on the winds in some areas you may get winds or gusts from any direction.**

Division F: The area that was burned out yesterday will be holding heat in the timbered areas, the winds today should be favorable for holding the line. The plantation areas might be showing some isolated spots interior but should not have any active fire behavior. Watch for fire movement to the north into the old burn area, this should be slow but anywhere there are heavier fuels it will continue smoldering and with the winds may flare up. The northeast side of the fire has moderated as it burned into the old fire scar.

Division M: The fire in this area during the burn period will be shaded from the West wind. There is still quite a bit of fuel on the east slope but as the fire moves out of the beetle kill the fire activity will decrease. Watch for rollout running back upslope in the afternoon. There is quite a bit of fresh red-needle beetle kill by the creek, the fire will burn actively in this area.

Division U: The fire is held up on the 1800 and 1881 road system. The area that was burned out yesterday will be holding a lot of heat in the heavies and may flare up later in the day as it burns into isolated pockets of dead and down beetle kill. Watch for roll out or ember's across the road later in the day. The fine fuels in this area will have minimal fire activity, just the jackpots of the heavier dead and down will consume.

Southwest side of the fire: The fire is cooling down in this area but the heavier fuels will continue to smolder, most available fuels have consumed.

#### AIR OPERATIONS:

Weak inversion should break by 10:00, gusty winds may impede aircraft operations, and there will be smoke obscuration all day.

### SAFETY

Watch for snags with the gusty winds. Watch out for rapid fire movement in the wind.

Quote of the Day

*I believe in rules. Sure I do. If there weren't any rules, how could you break them?*

Leo Durocher

## Division/Group Assignment List (ICS 204 WF)

<b>1. Incident Name:</b>		<b>3.</b>				
SUCKER CREEK		<b>Branch:</b>		<b>Division/Group:</b>		
<b>2. Operational Period:</b>		<b>F</b>				
Date/Time From: 08/20/2015 0700      THU	Date/Time To: 08/20/2015 2100      THU					
<b>4. Operations Personnel</b>						
<b>OPERATIONS CHIEF</b>		MYRON G WICKHAM / BROOKS BAKER RYAN WHITEAKER (T) / JEFF THUMM (T)		<b>BRANCH DIRECTOR</b>		
<b>DIVISION/GROUP SUPERVISOR</b>		EDDIE BACA DAVE ZORTMAN (T)		<b>AIR ATTACK SUPERVISOR</b>		
<b>5. Resources Assigned this Period</b>						
Strike Team / Task Force / Resource Designator	LWD	Leader	Number Persons	Drop Off PT./Time	Pick Up PT./Time	
C-1 HC1 CREW - T1 - TATANKA IHC	08/25	ZORTMAN	20	ICP/0700	ICP/2100	
E-83 ENG6 ENGINE - T6 - NAX - BRUSH 7-4	08/31	CHRIS STEINHOFF	3	ICP/0700	ICP/2100	
E-90 ENG6 ENGINE - T6 - BAKKEN WILDFIRES	08/31	ROB BAKKEN	3	ICP/0700	ICP/2100	
E-27 SKDS SKIDGINE, SOFTTRACK	08/28	JOSE COVEY	2	ICP/0700	ICP/2100	
E-3 SKG3 SKIDGINE - T3 - NR026 HDC001 - BODLE LOGGING -696CAC	08/25	AL BODEL	1	ICP/0700	ICP/2100	
E-2 SKG4 SKIDGINE - T4 - JOHN STITT CONSTRUCTION	08/25	STEVE BROWN	1	ICP/0700	ICP/2100	
E-21 WTS2 WATER TENDER - SUPPORT - T2 - NR089 HDC05 - BRANDON BA	08/26	A BARNET JR.	1	ICP/0700	ICP/2100	
O-58 FAL1 FALLER - T1 - NR012 MDC005 - MILLER CR	08/28	C. BUSSE / M. CARSON	2	ICP/0700	ICP/2100	
HEQB		COREY ROBINSON	1	ICP/0700	ICP/2100	
HEQB	08/24	LONG/TVEIDT (T)	2	ICP/0700	ICP/2100	
E-26 DOZ3 MISSOURI BREAKS	08/28	CHRIS KANE	1	ICP/0700	ICP/2100	
E-1 DOZ2 DOZER - T2 - NR036 HDC002 - PHILLIPS EXCAVATION - C060	08/25	ANDY PHILLIPS	1	ICP/0700	ICP/2100	
EMTF	09/01	ASHELI HUCKABA	1	ICP/0700	ICP/2100	
<b>6. Control Operations/Work Assignments:</b>						
Hold and secure line from Drop point 1 to Drop point 10 Hold and secure slop over Sucker Creek drainage Continue to prep dozer line Prep 30 ft around electrical boxes along the dozer line.						
<b>7. Special Instructions:</b>						
Check with Resource Advisor (READ) to ensure drafting is done correctly. Share resources as needed.						
<b>8. Division/Group Communication Summary</b>						
Function	Channel	RX Frequency N/W	RX Tone/NAC	TX Frequency N/W	TX Tone/NAC	Mode
TACTICAL	4	166.7250		166.7250	146.2	
COMMAND	8	173.0375		173.0375	146.2	
AIR TO GROUND	13	169.1500		169.1500		
<b>9. Prepared By (Resource Unit Leader)</b>		<b>Approved By (Planning Section Chief)</b>		<b>Date</b>	<b>Time</b>	
<i>Smullen (T)</i>		<i>Charles Nelson</i>		8/19/15	2010	

## Division/Group Assignment List (ICS 204 WF)

<b>1. Incident Name:</b>		<b>3.</b>				
SUCKER CREEK		<b>Branch:</b>		<b>Division/Group:</b>		
<b>2. Operational Period:</b>		<b>U</b>				
Date/Time From: 08/20/2015 0700      THU	Date/Time To: 08/20/2015 2100      THU					
<b>4. Operations Personnel</b>						
<b>OPERATIONS CHIEF</b>		MYRON G WICKHAM / BROOKS BAKER RYAN WHITEAKER (T) / JEFF THUMM (T)		<b>BRANCH DIRECTOR</b>		
<b>DIVISION/GROUP SUPERVISOR</b>		RALPH LUCAS BRANDON ALLEN (T)		<b>AIR ATTACK SUPERVISOR</b>		
				DAVE CORYN BRIAN PEARSON		
<b>5. Resources Assigned this Period</b>						
Strike Team / Task Force / Resource Designator	LWD	Leader	Number Persons	Drop Off PT./Time	Pick Up PT./Time	
CREW - T2IA - BEAVERHEAD DEERLODGE - CREW #3 - MOB # 2	08/20	PALIN/MCLINDEN (T)	18	ICP/0700	ICP/2100	
CREW - T2IA - ROSEBUD - CREW #2	08/25	BLUE THUNDER	20	ICP/0700	ICP/2100	
ENGINE - T4 - NR014 MDC004 - FALLER 2, IN E-8	08/25	DANIEL FALLER	3	ICP/0700	ICP/2100	
ENGINE - T4 - BKF 431	08/25	BRICE STANTON	4	ICP/0700	ICP/2100	
ENGINE - T6 - LCF - E671	08/24	CLIFF REYNOLDS	3	ICP/0700	ICP/2100	
E-82 ENG6 ENGINE - T6 - SPIRIT LAKE 2	08/31	TRAVIS DUBOIS	3			
E-89 ENG6 ENGINE- PEANUT PIE	08/25	RAY MOORE	3			
E-84 ENG6 ENGINE - T6 - WY-YNP - 691	08/31	AARON T WOODHAM/PAIGE (T)				
MEDIC	08/25	JOSHUA STARBUCK	1	ICP/0700	ICP/2100	
TFLD	08/30	ROBERT S SPENCE	1	ICP/0700	ICP/2100	
E-77 WTS3 WATER TENDER - DUSTSTOP	08/30	JOEL STRACHAN	1	ICP/0700	ICP/2100	
E-101 CHIP CHIPPER - TYPE 3 - MISSOULA RFD - 17082	09/01	BRIAN RUDGE	2	ICP/0700	ICP/2100	
E-102 CHIP CHIPPER - TYPE 3 - FRENCHTOWN RFD - 15322	09/01	CHAD ZEIGLER				
<b>6. Control Operations/Work Assignments:</b>						
Hold & Secure FS road 1800 / Prep FS road 1800 to F/M break to FS 1800 / Line and secure spot/slop-over south of FS road 1800 / Provide structure protection if needed / Scout 1881 road for potential control line to tie into Copper Creek / Chipper work FS road 1800						
<b>7. Special Instructions:</b>						
Check with Resource Advisor (READ) to ensure drafting is done correctly Share resources as needed						
<b>8. Division/Group Communication Summary</b>						
Function	Channel	RX Frequency N/W	RX Tone/NAC	TX Frequency N/W	TX Tone/NAC	Mode
TACTICAL	2	168.2000		168.2000	146.2	
TACTICAL	6	168.2500		168.2500	146.2	
COMMAND	7	167.1000		169.7500	146.2	
COMMAND	8	173.0375		173.0375	146.2	
AIR TO GROUND	13	169.1500		169.1500		
<b>9. Prepared By (Resource Unit Leader)</b>		<b>Approved By (Planning Section Chief)</b>		<b>Date</b>	<b>Time</b>	
<i>[Signature]</i>		<i>[Signature]</i>		8/19/15	2040	

## Division/Group Assignment List (ICS 204 WF)

<b>1. Incident Name:</b>		<b>3.</b>				
SUCKER CREEK		Branch:		Division/Group:		
<b>2. Operational Period:</b>		<b>M</b>				
Date/Time From: 08/20/2015 0700 THU		Date/Time To: 08/20/2015 2100 THU				
<b>4. Operations Personnel</b>						
<b>OPERATIONS CHIEF</b>		MYRON G WICKHAM/BROOKS BAKER RYAN WHITEAKER (T) / JEFF THUMM		<b>BRANCH DIRECTOR</b>		
<b>DIVISION/GROUP SUPERVISOR</b>		ELLIOT PICKET B. SCHROEDER (T)		<b>AIR ATTACK SUPERVISOR</b>		DAVE CORYN BRIAN PEARSON
<b>5. Resources Assigned this Period</b>						
Strike Team / Task Force / Resource Designator		LWD	Leader	Number Persons	Drop Off PT./Time	Pick Up PT./Time
ENGINE - T6 - NR077 BZC005 - FENIX FORESTRY LLC - 04959		08/27	KEVIN FLYNN	3	ICP/0700	ICP/2100
ENGINE - T6 - NR111 BZC008 - FENIX FORESTRY LLC - 35604		08/27	SUZANNE FLYNN	3	ICP/0700	ICP/2100
ENGINE - T6 - LCF - E661		08/24	WILL HALL	3	ICP/0700	ICP/2100
ENGINE 6 - HNF 42			MCGOWAN	8	ICP/0700	ICP/2100
E-10 ENG6 ENGINE - T6 - GNF - E662		08/24	STEVE SMITH	3	ICP/0700	ICP/2100
E-91 ENG6 ENGINE - T6 - NR059 BZC002 - BRANDON BAKKEN - 60988		09/01	JASON PHILLIPS	3	ICP/0700	ICP/2100
C-21 HC2I CREW - T2IA - MDS #2		08/29	MICHAEL A VALENTI	20	ICP/0700	ICP/2100
O-57 FALLER - T1 - NR009 MDC003 - ALASKAN C		08/27	RONDA LECLAIR	2	ICP/0700	ICP/2100
E-28 SKIDGINE - T3 - NR007 MDC003 - CALDBECK LOGGING - 29CAC		08/30	KIP CALDBECK	2	ICP/0700	ICP/2100
E-7 WTS2 WATER TENDER - SUPPORT - T2 - NR011 HDC01 - LEADING ED		08/23	KEN HILL	1	ICP/0700	ICP/2100
E-100 WTS2 WATER TENDER - LINCOLN RURAL FIRE DISTRICT			ARAMBARRI .	2	ICP/0700	ICP/2100
TFLD		08/29	CARL BEZANSON / RAY (T)	2	ICP/0700	ICP/2100
MEDIC		08/29	TERRY LEE STEVENSON	1	ICP/0700	ICP/2100
O-55 FAL1 FALLER - T1 NR016 MDC007 - TIMBER TR		08/28	AUSTIN CHAPIN	2	ICP/0700	ICP/2100
SOFR			BOB BLASI	1	ICP/0700	ICP/2100
<b>6. Control Operations/Work Assignments:</b>						
Patrol spot fires east of Copper Creek Rd Prep FS Road 330 from U/M break / Continue to hold fire west of Copper Creek HNF 42 available for IA / Scout contingency to east/northeast.						
<b>7. Special Instructions:</b>						
Check with Resource Advisor (READ) to ensure drafting is done correctly Share resources as needed						
<b>8. Division/Group Communication Summary</b>						
Function	Channel	RX Frequency N/W	RX Tone/NAC	TX Frequency N/W	TX Tone/NAC	Mode
TACTICAL	5	166.7750		166.7750	146.2	
AIR TO GROUND	13	169.1500		169.1500		
<b>9. Prepared By (Resource Unit Leader)</b>		<b>Approved By (Planning Section Chief)</b>		<b>Date</b>	<b>Time</b>	
<i>[Signature]</i>		<i>[Signature]</i>		8/19/15	2040	



## Division/Group Assignment List (ICS 204 WF)

<b>1. Incident Name:</b>		<b>3.</b>				
SUCKER CREEK		<b>Branch:</b>		<b>Division/Group:</b>  <b>H</b>		
<b>2. Operational Period:</b>						
Date/Time From: 08/20/2015 0700 THU		Date/Time To: 08/20/2015 2100 THU				
<b>4. Operations Personnel</b>						
<b>OPERATIONS CHIEF</b>		MYRON G WICKHAM / BROOKS BAKER RYAN WHITEAKER (T) / JEFF THUMM		<b>BRANCH DIRECTOR</b>		
<b>DIVISION/GROUP SUPERVISOR</b>		BARRY GREEN		<b>AIR ATTACK SUPERVISOR</b>		
<b>5. Resources Assigned this Period</b>						
Strike Team / Task Force / Resource Designator		LWD	Leader	Number Persons	Drop Off PT./Time	Pick Up PT./Time
O-56 FAL1 FALLER - T1 - NR006 MDC001 - JAMISON G		08/29	LEVI LEARN	2	ICP/0700	ICP/2100
O-10 FAL1 FALLER - T1 - NR005 MDC002 - JAMISON G		08/25	DOLEZAI / VALENTINE	2	ICP/0700	ICP/2100
O-11 FAL1 FALLER - T1 - NR015 MDC009 - TIMBER TR		08/25	THOMAS / NESMITH	2	ICP/0700	ICP/2100
<b>6. Control Operations/Work Assignments:</b>						
Scout potential line around Copper Creek and Snow Bank Creek. / Initiate prep with saw teams / Prep and assess Snotell site						
<b>7. Special Instructions:</b>						
Check with Resource Advisor (READ) to ensure drafting is done correctly Share resources as needed						
<b>8. Division/Group Communication Summary</b>						
Function	Channel	RX Frequency N/W	RX Tone/NAC	TX Frequency N/W	TX Tone/NAC	Mode
TACTICAL	2	168.2000		168.2000	146.2	
COMMAND	8	173.0375		173.0375	146.2	
COMMAND	7	167.1000		169.7500	146.2	
AIR TO GROUND	13	169.1500		169.1500		
<b>9. Prepared By (Resource Unit Leader)</b>		<b>Approved By (Planning Section Chief)</b>		<b>Date</b>	<b>Time</b>	
<i>[Signature]</i>		<i>[Signature]</i>		8/19/15	2040	

1. Incident Name		2. Operational Period		TFR		Surface to 11,000' MSL					
Sucker Creek Fire		08/20/15 0800 to 2100		5/3149							
4. Personnel / Communications		Name	Air/Air Frequency	Air Ground / Command Frequency	5. Fixed Wing		6. Rotor Wing		7. Available Time	8. Operating Base	
		Jay Lindgren	I.A. 124.975	167.9875 Narrow AG17	No.	Type	No.	Type	XXXXXX	XXXXXXXXXX	
IA Air Tactical Group Sup.			120.2250 132.4750	169.1500 pri. 166.6750 sec.	71D	Air Attack			0800	Helena	
Air Tactical Group Supervisor		Dave Coryn	"	"	6AB	Air Attack			0800	Helena	
Air Tactical Group Supervisor		Brian Pearson	"	"			N4BH	III	0800	Lincoln	
Helicopter Mgr.		Joe Hanson	"	"							
9.Location Function		11. Remarks (Safety Notes, Hazards, Priorities)									
		All orders for supplies should go through Divisions to Communications. Plan 24 hrs in advance if possible.									
N4BH		Sunrise:0635 Sunset:2030 All tactical missions are to be completed by sunset.									
N4BH		Helena Fire Desk 406-449-5475 Flight Follow RX/TX:168.650 Tone 110.9 Air Guard FM RX/TX 168.625 TT:110.9 Air Medical TAN: RX/TX 155.3400 Narrow DNRC IA A/G YELLOW A.M.:124.975 FM A/G:151.2200 Critical Need for HECMs									
12.		13. Prepared By Steve Jenner							14. Date: 8/19/15		15. Time: 1930

## **SAFETY MESSAGE**

### **Continue your Situational Awareness**

How did the fire burn yesterday? What did you observe? Did you inform your crews and provide Leaders Intent? Was LCES in place and did everyone know? The same conditions will happen again today with an increase in wind gusts, similar RH's, and fire activity increasing sooner in the day. Fuels are drying and ready to burn.

### **Unburned Fuel Between You and The Fire**

There is unburned fuels between the established fire lines and the fire on various divisions. When the time comes to engage, make sure you have a good anchor point, LCES is in place, and your plan is clear and communicated to all.

## **BEWARE OF BEARS - KEEP CAMP AREAS CLEAN**

### **Directing Helicopter Bucket Drops**

Provide general location on the incident. Finalize location using clock or door direction, giving a mirror flash, or use a panel. Visualize what the pilot sees from the air, explain the mission, describe the target, and how you want the drop - hover or running. Make sure all people are out of drop zone and notify pilot. Provide feedback. Pilots always have the final say.

## **Look Up, Look Down, Look Around**

Team Safety Officer: *Mark Shiery*

Incident Radio Communications Plan (ICS205)					
Incident Name:	Sucker Creek Fire	Date/Time Prepared:	8/19/15 2000 hrs	Operational Period:	8/20 Day
Channel	Function	Frequency	Tones	Assignment & Remarks	
1	TAC 1	168.0500	146.2	DIVISION	
2	TAC 2	168.2000	146.2	DIVISION H	
3	TAC 3	168.6000	146.2	DIVISION U	
4	TAC 4	166.7250	146.2	DIVISION F	
5	TAC 5	166.7750	146.2	DIVISION M	
6	TAC 6	168.2500	146.2	IA Group	
7	Command Repeater C-5	RX: 167.1000 TX: 169.7500	146.2	Stonewall Mtn., Northwest of Fire Linked to Channel 8 Repeater	
8	Command Repeater C-12	RX: 173.0375 TX: 167.3250	146.2	Granite Butte, Southeast of Fire Linked to Channel 7 Repeater	
9	Unassigned			Unassigned	
10	Helena NF Repeater	RX: 166.2250 TX: 164.1500	192.8	Helena National Forest Repeater Stonewall Mtn., Northwest of Fire	
11	Helena NF Repeater	RX: 166.2250 TX: 164.1500	123.0	Helena National Forest Repeater Silver King, Northeast of Fire	
12	Helena NF Repeater	RX: 166.2250 TX: 164.1500	167.9	Helena National Forest Repeater Granite Butte, Southeast of Fire	
13	Primary Air-to-Ground	169.1500		Primary Air-to-Ground	
14	Secondary Air-to-Ground	166.6750		Secondary Air-to-Ground	
15	Helena NF Air-to-Ground	167.9875		Helena NF Air-to-Ground Primary	
16	Air Guard	168.6250	TX: 110.9	***Aircraft Emergency Frequency*** Use only in emergency for aircraft contact	

Prepared by: Mike Hannemann, COML

Notes:

~ Use human repeaters when necessary.

~ Tones are on transmit and receive frequencies unless shown.

~ For the TAC tones to work, turn your squelch knob to the off position.

~ Channels 7 & 8 are linked together.

Use the repeater you hit the best and your voice will be repeated on both equally.

~ All radios should be run in Analog mode only (not Digital or Multi-mode) and Narrowband.

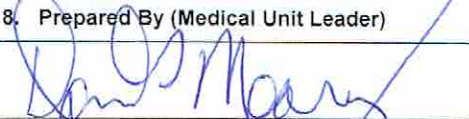
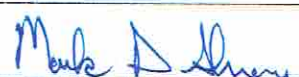
## MEDICAL PLAN (ICS 206 WF)

1. Incident/Project Name		2. Operational Period			
<b>Sucker Creek Fire</b>		Date/Time <b>08/20/2015 0700-2100hrs</b>			
3. Ambulance Services					
Name	Complete Address	Phone & EMS Frequency	Advanced Life Support (ALS)		
			Yes	No	
Lincoln Rural Ambulance	114 Stemple Pass Road, Lincoln, MT 59639	Lincoln Rural Ambulance	X		
Parker Medical Center Urgent Care	Hwy. 200, Lincoln, MT 59639	406-362-4603	X		
4. Air Ambulance Services					
Name	Phone	Type of Aircraft & Capability			
Summit Air Ambulance, Helena MT	1-877-554-9111	Helicopter/Fixed Wing			
Mercy Flight, Great Falls, MT	1-800-972-4000	Helicopter/ EC135-P2+ (American Eurocopter), Fixed Wing Cessna Mustang			
Malstrom AFB, Great Falls, MT	800-851-3651	Helicopter, Bell 205,			
Northwest Medstar, Missoula, MT	1-800-991-7363	Airbus Helicopter EC135, Pilatus PC-12 Turboprop Fixed Wing			
Two Bear Air, Whitefish, MT	1-406-758-5610	Bell Helicopter 429			
5. Hospitals					
Name Complete Address	GPS Datum – WGS 84 Degrees Decimal Minutes	Travel Time Air Gnd	Phone	Helipad Yes No	Level of Care Facility
St Peters Hospital (L3) Helena, MT	Lat: 46° 34.88 N	20 m 1.5 h	406-442-2480	<input checked="" type="checkbox"/> <input type="checkbox"/>	Trauma L3
	Long: 111° 59.80 W				
	VHF:				
University Medical Center L1 Trauma & Burn Center Salt Lake City, UT	Lat: 40° 46.34 N	90 m 8 hr	801-581-2121	<input checked="" type="checkbox"/> <input type="checkbox"/>	Trauma L1 Burn Center
	Long: 111° 50.24 W				
	VHF:				
St. Patrick Hospital Missoula, MT	Lat: 46° 52.51 N	40 m 2.0 hr	406-543-7271	<input checked="" type="checkbox"/> <input type="checkbox"/>	Trauma L2
	Long: 114° 00.01 W				
	VHF:				
Seattle Harbor View Hosp. L1 + Burn Center Seattle, WA	Lat: 47° 36.1780 N	90 m 8 hr	206-744-3000	<input checked="" type="checkbox"/> <input type="checkbox"/>	Trauma L1 Burn Center
	Long: 122° 19.492 W				
	VHF:				
6. Division   Branch   Group					
<b>F</b>	Area Location Capability				
	EMS Responders/Capability/Equipment:	Joshua Starbucks (EMT); BLS Equipped			
	Medical Emergency Channel:	Command 7 or 8			
	ETA to scene:	Ground – 2.5 hrs		Air – 45 min.	
	Scene to hospital:	Ground – 2.5 hrs		Air – 20 min	
	Approved Helispot:	H10			
	Lat:	47° 1.677 N			
	Long:	112° 38.071 W			
<b>H</b>	Area Location Capability				
	EMS Responders/Capability/Equipment:	Terry Lee Stevenson (CEP); ALS Equipped			
	Medical Emergency Channel:	Command 7 or 8			
	ETA to Scene:	Ground – 2.5 hrs		Air – 45 min	
	Scene to Hospital:	Ground – 2.5 hrs.		Air – 20 min	
	Approved Helispot:	CG			
	Lat:	47° 4.530 N			
	Long:	112° 37.080 W			

## MEDICAL PLAN (ICS 206 WF)

6. Division   Branch   Group	Area Location Capability	
<b>M</b>	EMS Responders/Capability/Equipment:	Terry Lee Stevenson (CEP); ALS Equipped
	Medical Emergency Channel:	Command 7 or 8
	ETA to Scene:	Ground – 2.5 hrs                      Air – 45 min
	Scene to Hospital:	Ground – 2.5 hrs.                      Air – 20 min
	Approved Helispot:	Pit
	Lat:	47° 1.051 N
	Long:	112° 33.360 W
<b>U</b>	EMS Responders/Capability/Equipment:	Joshua Starbucks (EMT); BLS Equipped
	Medical Emergency Channel:	Command 7 or 8
	ETA to Scene:	Ground – 2.5 hrs                      Air – 45 min
	Scene to Hospital:	Ground – 2.5 hrs.                      Air – 20 min
	Approved Helispot:	Pit
	Lat:	47° 1.051 N
	Long:	112° 33.360 W
<b>ICP</b>	EMS Responders/Capability/Equipment:	Duane Deck (CEP); ALS Equipped
	Medical Emergency Channel:	Command 7 or 8
	ETA to Scene:	Ground – 5 min                      Air – 45 min
	Scene to Hospital:	Ground – 1.0 hrs                      Air – 20 min.
	Approved Helispot:	Trading Post lot
	Lat:	46° 57.81 N
	Long:	112° 44.035 W

7. Protocols:	Major Emergency	Minor Emergency
	<ol style="list-style-type: none"> <li>1. Notify direct supervisor, DIVS, and line medic</li> <li>2. DIVS declare "Medical Emergency" and clear command channel</li> <li>3. Assess, stabilize, and prepare patient(s) for transport</li> <li>4. Use Medical Incident Report during process</li> <li>5. Notify Incident Communications of emergency and request appropriate assistance</li> <li>6. Contact IC and Line Officer</li> </ol> <p>Begin documentation of the incident, including all information received or transmitted by radio/phone.</p> <p><b>Important: Do not use names during communication</b></p>	<ol style="list-style-type: none"> <li>1. Notify direct supervisor and line medic</li> <li>2. Assess patient and provide medical aid</li> <li>3. Assess transport need and method</li> <li>4. Use Medical Incident Report during process</li> <li>5. Transport to                      if needed</li> </ol> <p>Begin documentation of the incident, including all information received or transmitted by radio/phone.</p> <p><b>Important: Do not use names during communication</b></p>

8. Prepared By (Medical Unit Leader)	9. Date/Time	10. Reviewed By (Safety Officer)	11. Date/Time
	08/19/2015		08/19/2015 1800hrs

# MEDICAL PLAN (ICS 206 WF)

Medical Incident Report					
FOR ALL MEDICAL EMERGENCIES: IDENTIFY ON SCENE INCIDENT COMMANDER BY NAME AND POSITION AND ANNOUNCE "MEDICAL EMERGENCY" TO INITIATE RESPONSE FROM IMT COMMUNICATIONS/DISPATCH.					
<b>Use items one through nine to communicate situation to communications/dispatch.</b>					
<b>1. CONTACT COMMUNICATIONS/DISPATCH</b>					
<i>Ex: "Communications, Div. Alpha. Stand-by for Priority Medical Incident Report." (If life threatening request designated frequency be cleared for emergency traffic.)</i>					
<b>2. INCIDENT STATUS:</b> <i>Provide incident summary and command structure.</i>					
<b>Nature of Injury/Illness</b>			<i>Describe the injury (Ex: Broken leg with bleeding)</i>		
Incident Name			<i>Geographic Name + "Medical" (Ex: Trout Meadow Medical)</i>		
Incident Commander			<i>Name of IC</i>		
Patient Care			<i>Name of Care Provider (Ex: EMT Smith)</i>		
<b>3. INITIAL PATIENT ASSESSMENT:</b> <i>Complete this section for each patient. This is only a brief, initial assessment. Provide additional patient info after completing this 9 Line Report.</i>					
Number of Patients:	Male / Female	Age:	Weight		
Conscious? <input type="checkbox"/> YES <input type="checkbox"/> <b>NO = MEDEVAC!</b>					
Breathing? <input type="checkbox"/> YES <input type="checkbox"/> <b>NO = MEDEVAC!</b>					
Mechanism of Injury. <i>What caused the injury?</i>					
Lat/Long (Datum WGS84) <i>Ex: N 40° 42.45' x W 123° 03' 24'</i>					
<b>4. SEVERITY OF EMERGENCY, TRANSPORT PRIORITY</b>					
SEVERITY			TRANSPORT PRIORITY		
<input type="checkbox"/> <b>URGENT-RED</b> Life threatening injury or illness. <i>Ex: Unconscious, difficulty breathing, bleeding severely, 2° – 3° burns more than 4 palm sizes, heat stroke, disoriented.</i>			Ambulance or MEDEVAC helicopter. Evacuation need is <b>IMMEDIATE.</b>		
<input type="checkbox"/> <b>PRIORITY-YELLOW</b> Serious Injury or illness. <i>Ex: Significant trauma, not able to walk, 2° – 3° burns not more than 1-2 palm sizes</i>			Ambulance or consider air transport if at remote location. Evacuation may be <b>DELAYED.</b>		
<input type="checkbox"/> <b>ROUTINE-GREEN</b> Not a life threatening injury or illness. <i>Ex: Sprains, strains, minor heat-related illness</i>			Non-Emergency Evacuation considered <b>Routine of Convenience.</b>		
<b>5. TRANSPORT PLAN:</b>					
<b>Air Transport:</b> (Agency Aircraft Preferred)					
<input type="checkbox"/> Helispot		<input type="checkbox"/> Short-haul/Hoist		<input type="checkbox"/> Life Flight	
				<input type="checkbox"/> Other	
<b>Ground Transport:</b> <i>Click here to enter text.</i>					
<input type="checkbox"/> Self-Extract		<input type="checkbox"/> Carry-Out		<input type="checkbox"/> Ambulance	
				<input type="checkbox"/> Other	
<b>6. ADDITIONAL RESOURCE/EQUIPMENT NEEDS:</b>					
<input type="checkbox"/> Paramedic/EMT(s)		<input type="checkbox"/> Crew(s)		<input type="checkbox"/> SKED/Backboard/C-Collar	
<input type="checkbox"/> Burn Sheet(s)		<input type="checkbox"/> Oxygen		<input type="checkbox"/> Trauma Bag	
<input type="checkbox"/> Medication(s)		<input type="checkbox"/> IV/Fluid(s)		<input type="checkbox"/> Cardiac Monitor/AED	
<input type="checkbox"/> Other (i.e. splints, rope rescue, wheeled litter)					
<b>7. COMMUNICATIONS:</b>					
Function	Channel Name/Number	Receive (Rx)	Tone/NAC *	Transmit (Tx)	Tone/NAC *
<i>Ex: Command</i>	<i>Forest Rpt, Ch. 2</i>	<i>168.3250</i>	<i>110.9</i>	<i>171.4325</i>	<i>110.9</i>
COMMAND					
AIR-TO-GRND					
TACTICAL					
*(NAC for digital radio system)					
<b>8. EVACUATION LOCATION:</b>					
Lat/Long (Datum WGS84) <i>EX: N 40 42 45' x W 123 03 24'</i>					
Patient's ETA to Evacuation Location:					
Helispot/Extraction Size and Hazards:					
<b>9. CONTINGENCY:</b>					
<b>Considerations:</b> <i>If primary options fail, what actions can be implemented in conjunction with primary evacuation method? Be thinking ahead...</i>			<b>REMEMBER:</b> Confirm ETA's of resources ordered Act according to your level of training Be Alert. Keep Calm. Think Clearly. Act Decisively.		

## MEDICAL PLAN (ICS 206 WF)

<b>1. Incident/Project Name</b>		<b>2. Operational Period</b>		
<b>Sucker Creek Fire</b>		Date/Time <b>08/20/2015 0700-2100hrs</b>		
<b>3. Ambulance Services</b>				
Name	Complete Address	Phone & EMS Frequency	Advanced Life Support (ALS)	
			Yes	No
Lincoln Rural Ambulance	114 Stemple Pass Road, Lincoln, MT 59639	Lincoln Rural Ambulance	X	
Parker Medical Center Urgent Care	Hwy. 200, Lincoln, MT 59639	406-362-4603	X	
<b>4. Air Ambulance Services</b>				
Name	Phone	Type of Aircraft & Capability		
Summit Air Ambulance, Helena MT	1-877-554-9111	Helicopter/Fixed Wing		



## SUCKER CREEK FIRE—Suppression Damage Repair (Rehab) Guidelines

These are preliminary suppression rehab guidelines to be implemented by crews where operations allow. These guidelines will be incorporated into a comprehensive suppression repair plan.

### Dozer/Skidgine line

- Dozer line should be restored by a small to mid-sized excavator with a thumb, as follows:
  - Provide drainage with water bars to standard specifications listed below.
  - Pull berms back into line, uniformly distributing soil and organic material to re-establish natural contours.
  - Place fallen trees/slash on the line. Lop and scatter limbs and tops onto line, compressing slash with bucket to maximize ground contact. Attempt to blend slash into surrounding landscape as much as possible (avoid leaving a stripe of heavy slash only on the rehabbed line).
  - Where line ties in with existing roads, block rehabilitated line with woody material and boulders if available to make these areas impassable by OHVs.
- Remove all trash, equipment, and flagging

### Hand line

- Pull berms (topsoil and organic material or duff) into hand line and restore line to blend with undisturbed hillslope contours.
- Scatter limbs and tops to obliterate evidence of the line as much as practical.
- Where required, water bar spacing should follow standard specifications listed below
- Remove all trash, equipment, and flagging

### Skidgine off-road tracks

- Where possible, drag slash onto off-road/off-line skidgine tracks to obstruct potential access.

### High stumps

- Where sawyer safety allows, flush-cut or low-stump any high stumps—especially any within view of designated trails or roads. Avoid leaving sharp points (flush-cut flat stumps).

### Water Bar Specifications:

- Install water bars diagonal to fire line where natural drains occur. Place water bars at 30-45 degrees perpendicular to the fall line.
- Water bars for dozer line should rise 12-18" above ground level. Hand line water bars should be 6-8" above ground surface with at least a 4" cup on upslope side.
- Augment water bar with slash where opportunities exist.
- Ensure that each water bar has a direct outlet of water and drains into vegetation or rocks.
- Where flagged, install water bars at pin flags. In absence of flags, space water bars at approximate intervals (using suitable locations for drainage is more important than getting the spacing down to the foot):

Fire line slope	Approximate spacing (feet)	Fire line slope	Approximate spacing (feet)
<10%	not needed	20-30%	75
10-15%	150	30-40%	50
15-20%	100	40%+	25

## MAJOR INCIDENT WITHIN AN INCIDENT ACTION PLAN

**IC, Command and General staff** will immediately respond to "Communications" to monitor major accident/injury actions and coordinate additional response when necessary. Roles and responsibilities are:

**Incident Commander:** Provides over-all administrative and procedural control; determines needs for investigative response and critical incident stress debriefing.

**Operations or Logistics Chief:** Directs operational response, assistance and evacuation (OPS Chief for "Line/Air" accidents; LOG Chief for vehicle accidents). Assesses/recommends investigative responses and critical incident stress debriefing.

**Division/Group Supervisor:** Supervises, or appoints qualified individual, to supervise all actions to "control scene" (communications to/from scene; support to response, medical treatment and evacuation efforts; scene security; personnel needed/relocated, etc.)

**Plans Chief:** Assigns individual to document all accident related communications; contacts Agency Dispatch.

**Finance Chief:** Arranges for publicly off-incident support; assures investigative response completed for potential claims.

**Safety Officer:** Monitors operational safety; assist/advise. Respond to scene (when doing so does not hinder over-all response, treatment or evacuation). Assesses/recommends investigative response and critical incident stress debriefing.

**Communications Unit Leader:** Maintains clear radio traffic and monitors communications to support response, medical treatment and evacuation. Communication will notify Section Chiefs of Incident.

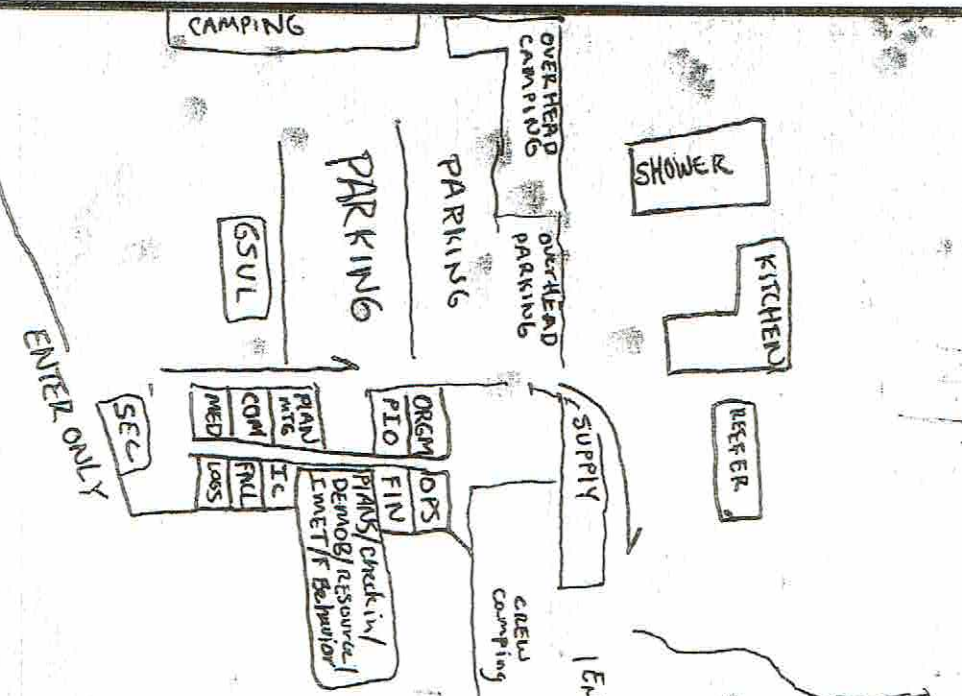
**Medical Unit Leader/Safety Officer:** Coordinate with Operations to assess medical needs for the incident and determines appropriate level of medical response and transportation.

### **POLICIES/GUIDELINES:**

- **Medical treatment and evacuation** have TOP priority.
- **Immediate and clear communication** CRITICAL for response, medical treatment and evacuation. Other radio traffic will be restricted to that which involves emergency situations.
- **Personnel not needed at the scene will be relocated** or returned to their assigned work; the scene will be secured for possible investigation and witnesses documented.
- **Victims name** will NOT be transmitted over the radio.
- **No accident related information** will be released to the public without approval of the Incident Commander (Agency Dispatch will notify Agency Emergency Coordinator, Line Officer and Regional Office. For fatalities, Agency Dispatch will also contact the Sheriff's Office and the victim's employer).

**SW Team 4  
Sucker Creek  
Fire Phone List**

<b>Unit</b>	<b>Phone</b>	<b>FAX</b>
Communications	406-362-3407	
Logistics	406-362-3409	
Medical	406-362-3408	
GIS/Fire Behavior	406-362-3411	
IC	406-362-3412	
Plans	406-362-3414	
Situation/Check In Demob	406-362-3415	406-362-3413
Finance	406-362-3417	406-362-3416
Ordering	406-362-3404	
Operations	406-362-3418	
PIO	406-362-3405	



SUCKER CREEK  
BASE CAMP

Source: Esri, DigitalGlobe, GeoEye, i-cubed, USDA, USGS, AEX, Getmapping, Aerogrid, IGN, IGP, swisstopo, and the GIS User Community

Keep Cool Creek

EXIT ONLY

<b>UNIT LOG</b>	1. INCIDENT NAME	2. DATE PREPARED	3. TIME PREPARED
-----------------	------------------	------------------	------------------

4. UNIT NAME/DESIGNATORS.	5. UNIT LEADER (NAME AND POSITION)	6. OPERATIONAL PERIOD
---------------------------	------------------------------------	-----------------------

7. PERSONNEL ROSTER ASSIGNED		
NAME	ICS POSITION	HOME BASE

8. ACTIVITY LOG (CONTINUE ON REVERSE)	
TIME	MAJOR EVENTS

**Sucker Creek Fire**  
**MT-HNF-000164**  
**8/20/15**  
**Day Shift**  
**NAD83 Zone 12N**



A. Seifert  
 August 19, 2015  
 2000 Hours



	Fire History
	Buried KV Powerline
	Division
	Drop Point
	Helispot
	Lookout
	MediVac Site
	Repeater
	Spot Fire
	Water Source
	Other
	Uncontrolled Fire Edge
	Completed Dozer Line
	Completed Line
	H - H Hand Line
	Planned Fire Line
	Structures

