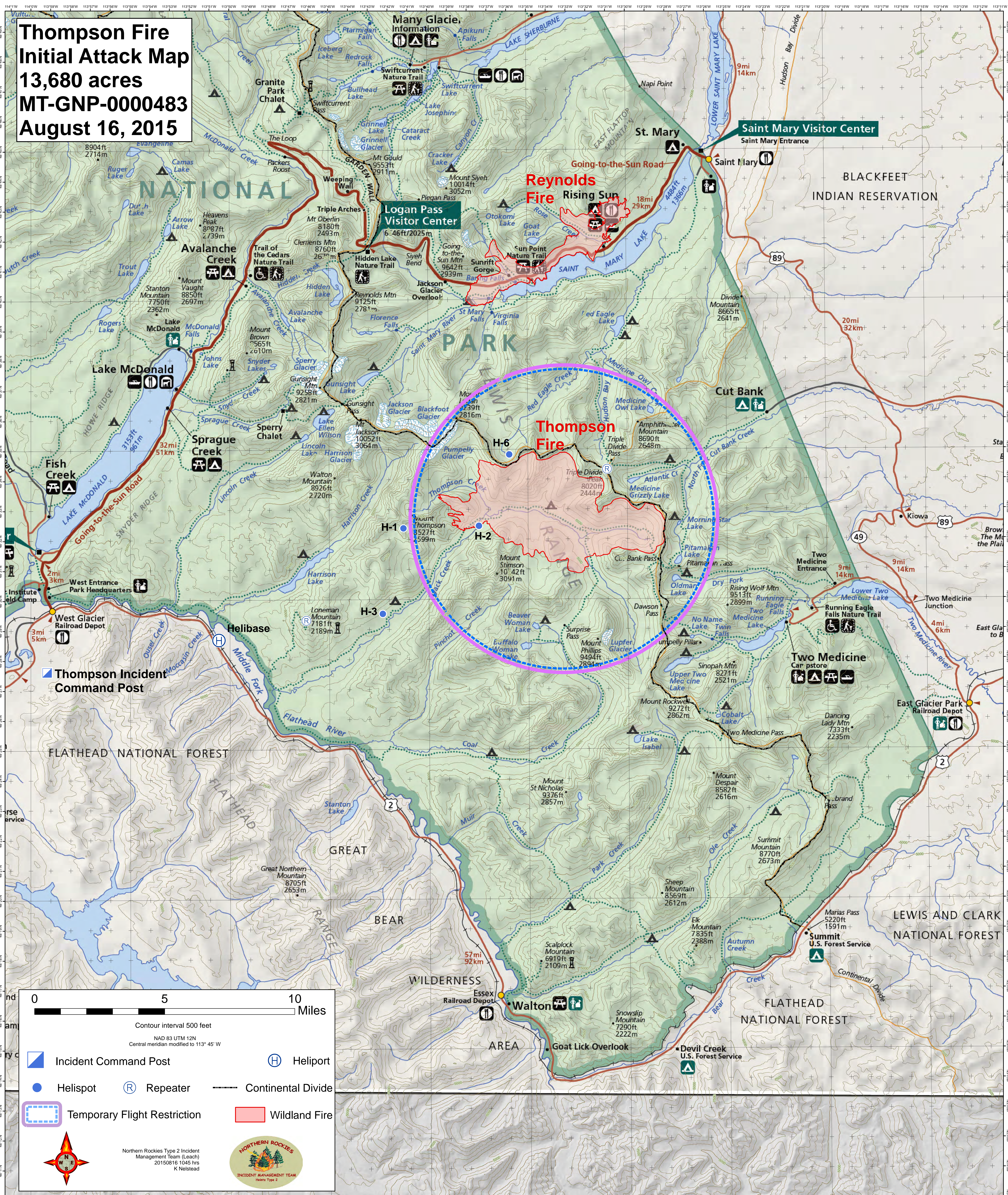


**Thompson Fire
Initial Attack Map
13,680 acres
MT-GNP-0000483
August 16, 2015**



0 5 10 Miles

Contour interval 500 feet
NAD 83 UTM 12N
Central meridian modified to 113° 45' W

- Incident Command Post
- Helisport
- Helispot
- Repeater
- Continental Divide
- Temporary Flight Restriction
- Wildland Fire

Northern Rockies Type 2 Incident Management Team (Leach)
20150816 1045 hrs
K Nelstead