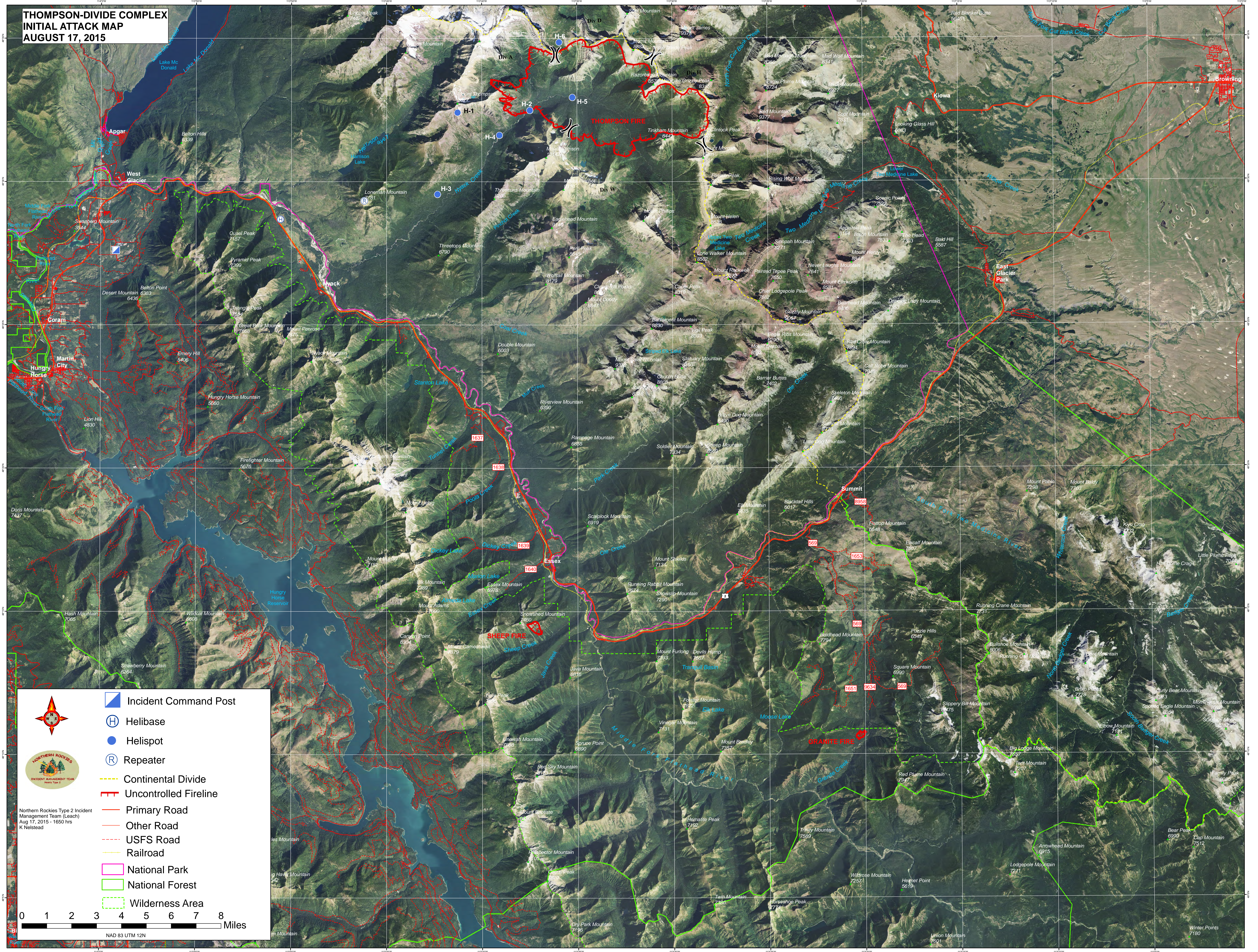









**THOMPSON-DIVIDE COMPLEX
INITIAL ATTACK MAP
AUGUST 17, 2015**





Northern Rockies Type 2 Incident Management Team (Leach)
Aug 17, 2015 - 1650 hrs
K Nelstead

-  Incident Command Post
-  Helibase
-  Helispot
-  Repeater
-  Continental Divide
-  Uncontrolled Fireline
-  Primary Road
-  Other Road
-  USFS Road
-  Railroad
-  National Park
-  National Forest
-  Wilderness Area



0 1 2 3 4 5 6 7 8 Miles

NAD 83 UTM 12N