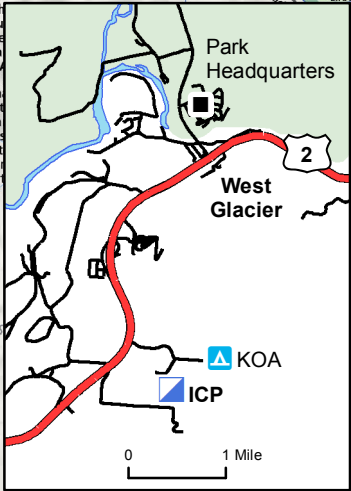
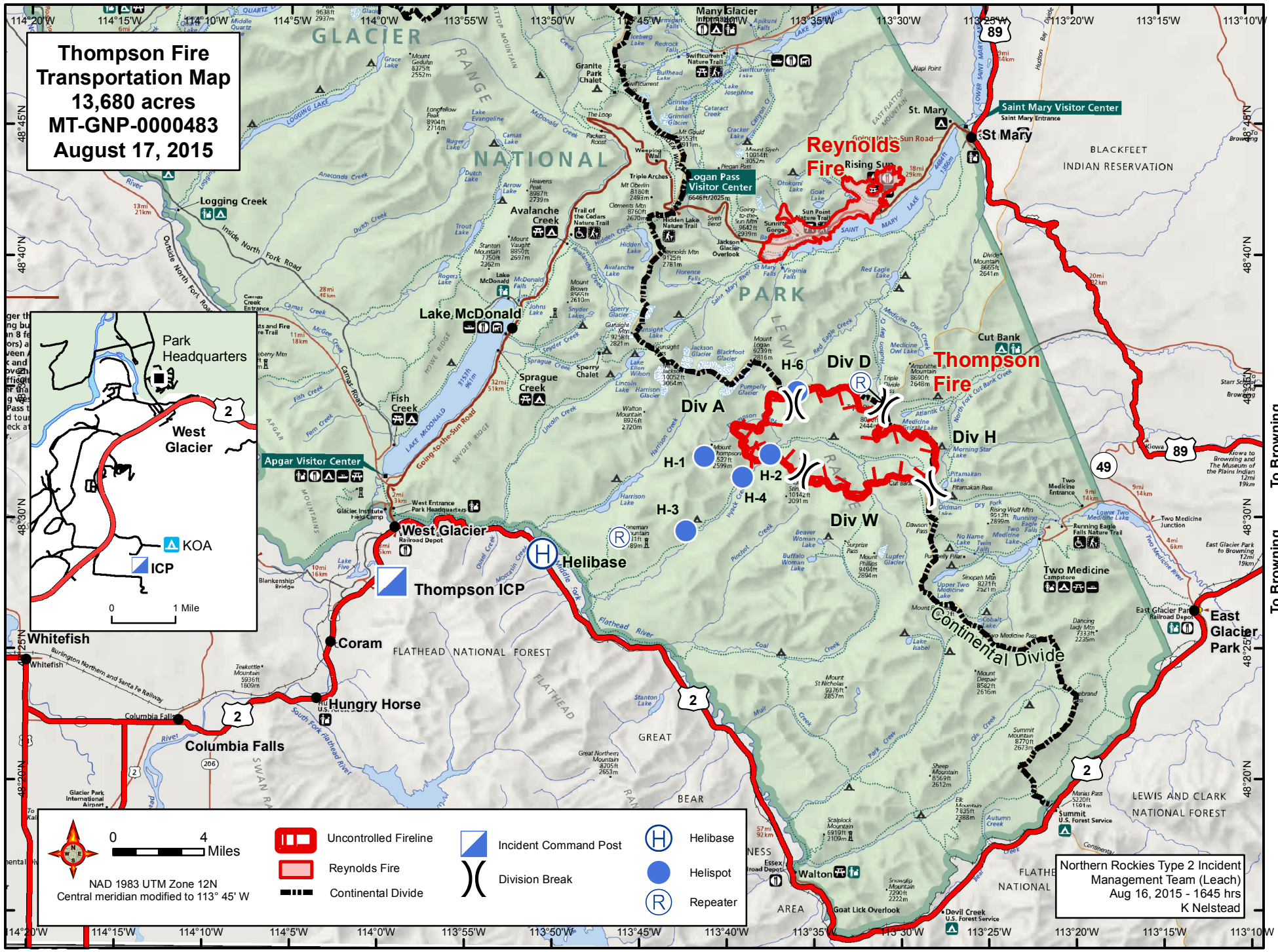


**Thompson Fire
Transportation Map
13,680 acres
MT-GNP-000483
August 17, 2015**



0 4 Miles
NAD 1983 UTM Zone 12N
Central meridian modified to 113° 45' W

-  Uncontrolled Fireline
-  Reynolds Fire
-  Continental Divide
-  Incident Command Post
-  Helibase
-  Helibase
-  Helispot
-  Repeater
-  Division Break

Northern Rockies Type 2 Incident Management Team (Leach)
Aug 16, 2015 - 1645 hrs
K Nelstead

To Eureka

To Browning

To Babb

To Kalispell