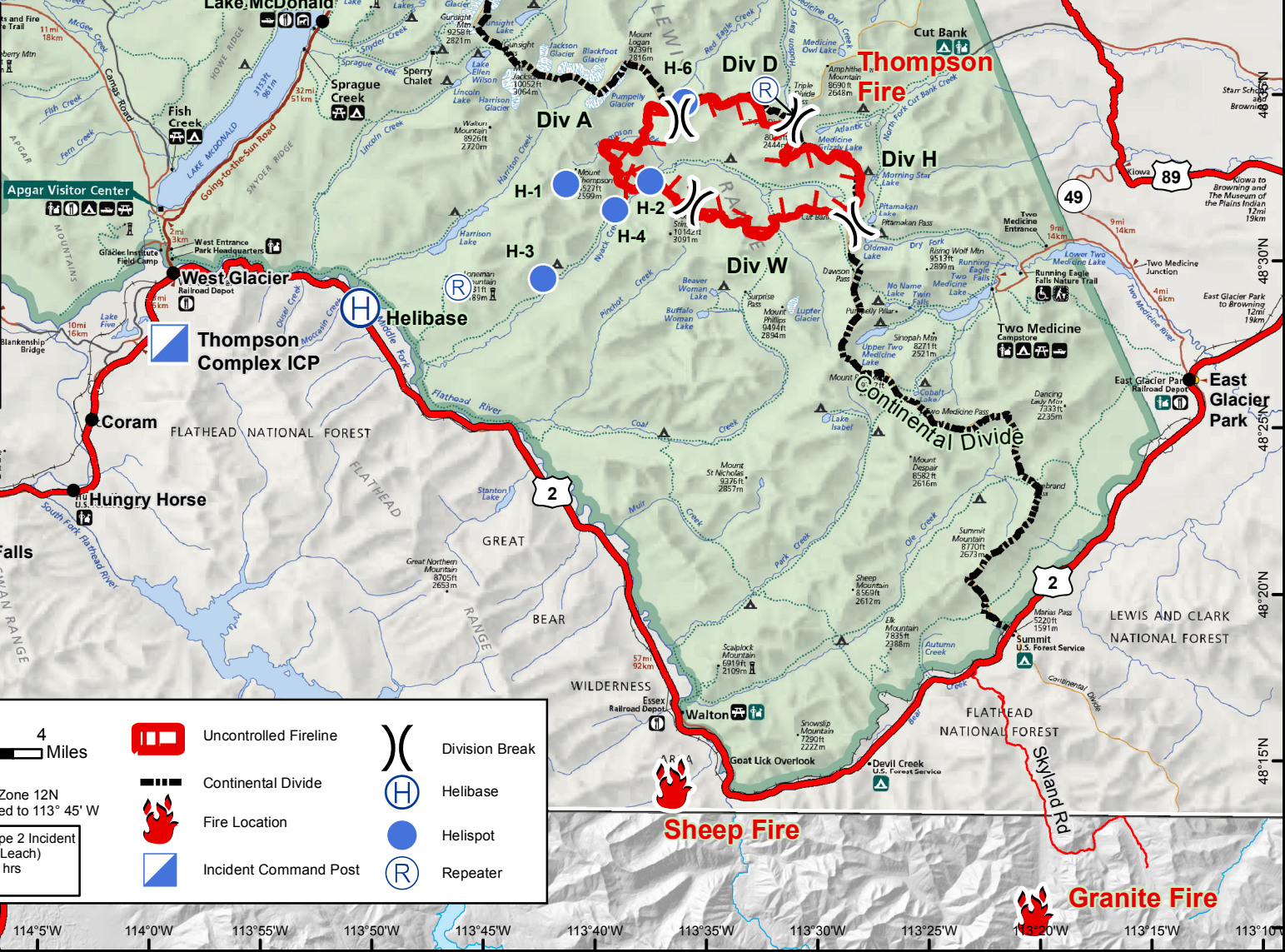
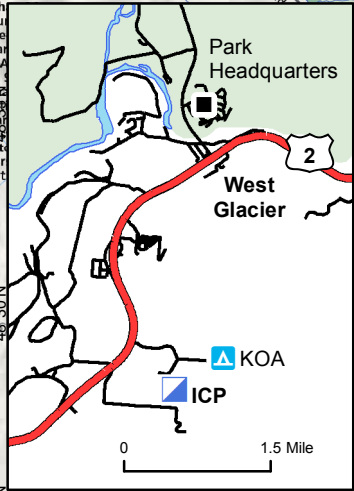


**Thompson-Divide Complex
Transportation Map**
Thompson Fire - 13,680 acres
Sheep Fire - 100 acres
Granite Fire - 30 acres
August 17, 2015



0 4 Miles
 NAD 1983 UTM Zone 12N
 Central meridian modified to 113° 45' W
 Northern Rockies Type 2 Incident Management Team (Leach)
 Aug 16, 2015 - 2100 hrs
 K Nelstead

- Uncontrolled Fireline
- Continental Divide
- Fire Location
- Incident Command Post
- Division Break
- Helibase
- Helispot
- Repeater

To Missoula

To Browning

To Babb

To Eureka

To Browning

To Missoula