

**Thompson-Divide Complex**  
**MT-GNP-000630**  
**Transportation Map**  
**Thompson Fire - 13,680 acres**  
**Sheep Fire - 77 acres**  
**Granite Fire - 27 acres**  
**August 18, 2015**

NAD 1983 UTM Zone 12N  
 Central meridian modified to 113° 45' W

- Uncontrolled Fireline
- Continental Divide
- Fire Location
- Incident Command Post
- Division Break
- Helibase
- Helispot
- Repeater
- Highway Mile Marker

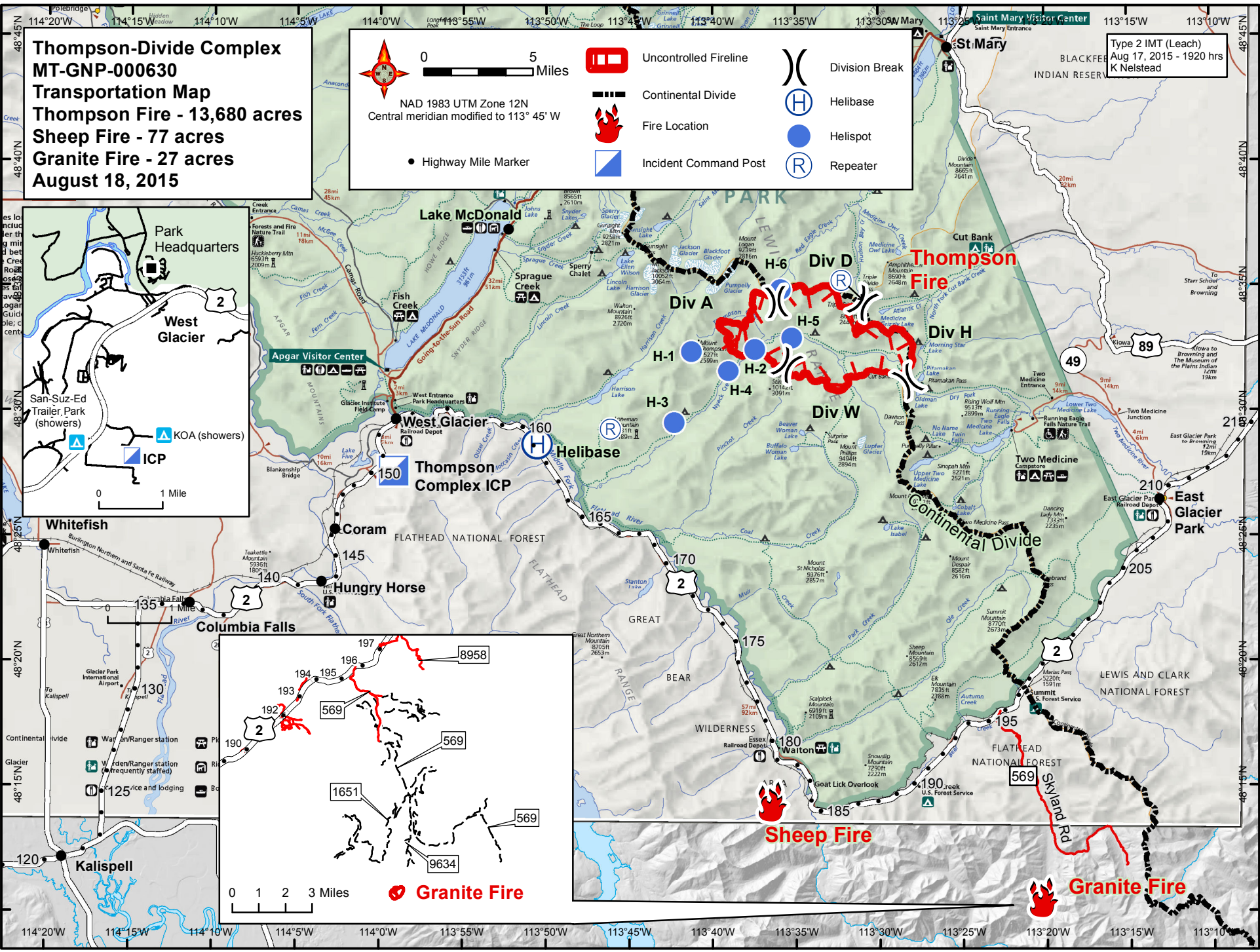
Type 2 IMT (Leach)  
 Aug 17, 2015 - 1920 hrs  
 K Nelstead

Park Headquarters  
 West Glacier  
 San-Suz-Ed Trailer Park (showers)  
 KOA (showers)  
 ICP

0 1 Mile

Granite Fire

0 1 2 3 Miles



To Missoula

To Babb

To Browning

To Eureka

To Libby