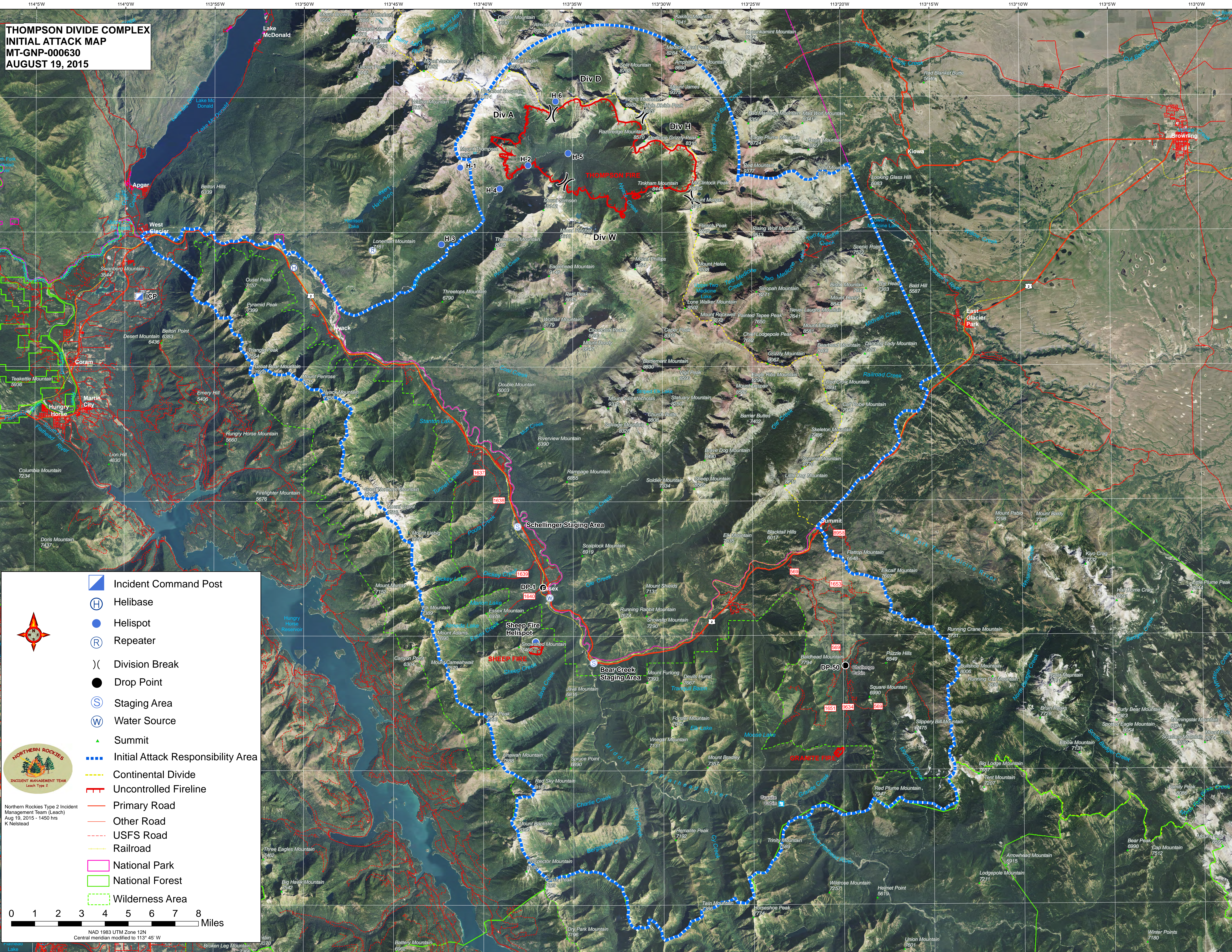


**THOMPSON DIVIDE COMPLEX
INITIAL ATTACK MAP
MT-GNP-000630
AUGUST 19, 2015**



- Incident Command Post
- Ⓜ Helibase
- Helispot
- Ⓡ Repeater
-) Division Break
- Drop Point
- Ⓢ Staging Area
- Ⓦ Water Source
- ▲ Summit
- - - Initial Attack Responsibility Area
- - - Continental Divide
- Uncontrolled Fireline
- Primary Road
- Other Road
- - - USFS Road
- Railroad
- National Park
- National Forest
- Wilderness Area

NAD 1983 UTM Zone 12N
Central meridian modified to 113° 45' W

Northern Rockies Type 2 Incident Management Team (Leach)
Aug 19, 2015 - 1450 hrs
K Nelstead