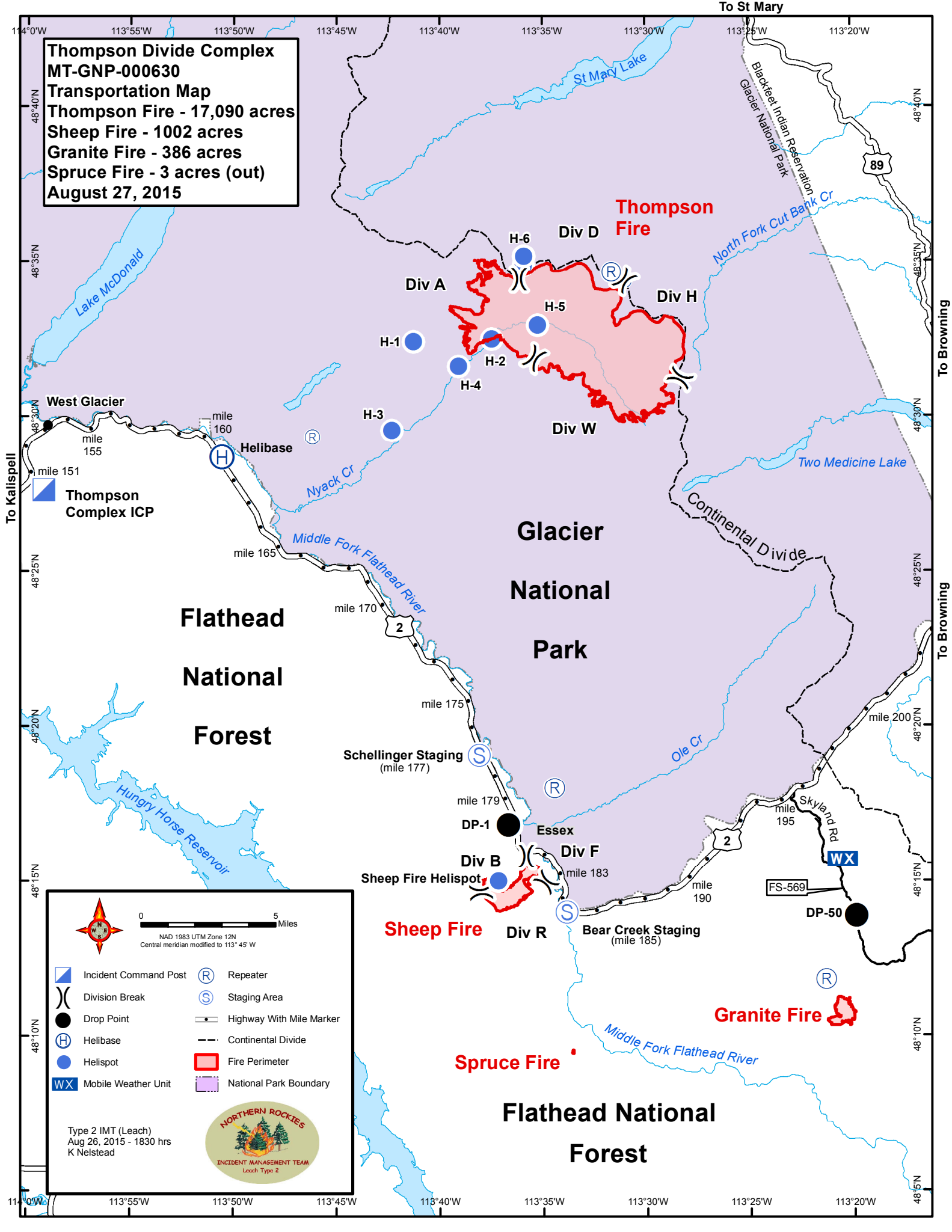


**Thompson Divide Complex**  
**MT-GNP-000630**  
**Transportation Map**  
**Thompson Fire - 17,090 acres**  
**Sheep Fire - 1002 acres**  
**Granite Fire - 386 acres**  
**Spruce Fire - 3 acres (out)**  
**August 27, 2015**



**Flathead  
National  
Forest**

**Glacier  
National  
Park**

**Flathead National  
Forest**

0 5 Miles

NAD 1983 UTM Zone 12N  
Central meridian modified to 113° 45' W

<ul style="list-style-type: none"> <li> Incident Command Post</li> <li> Division Break</li> <li> Drop Point</li> <li> Helibase</li> <li> Helispot</li> <li> Mobile Weather Unit</li> </ul>	<ul style="list-style-type: none"> <li> Repeater</li> <li> Staging Area</li> <li> Highway With Mile Marker</li> <li> Continental Divide</li> <li> Fire Perimeter</li> <li> National Park Boundary</li> </ul>
--	--

INCIDENT MANAGEMENT TEAM  
Leach Type 2

Type 2 IMT (Leach)  
Aug 26, 2015 - 1830 hrs  
K Nelstead

To Kalispell

To Browning

To Browning

To St Mary

To Kalispell

To Kalispell