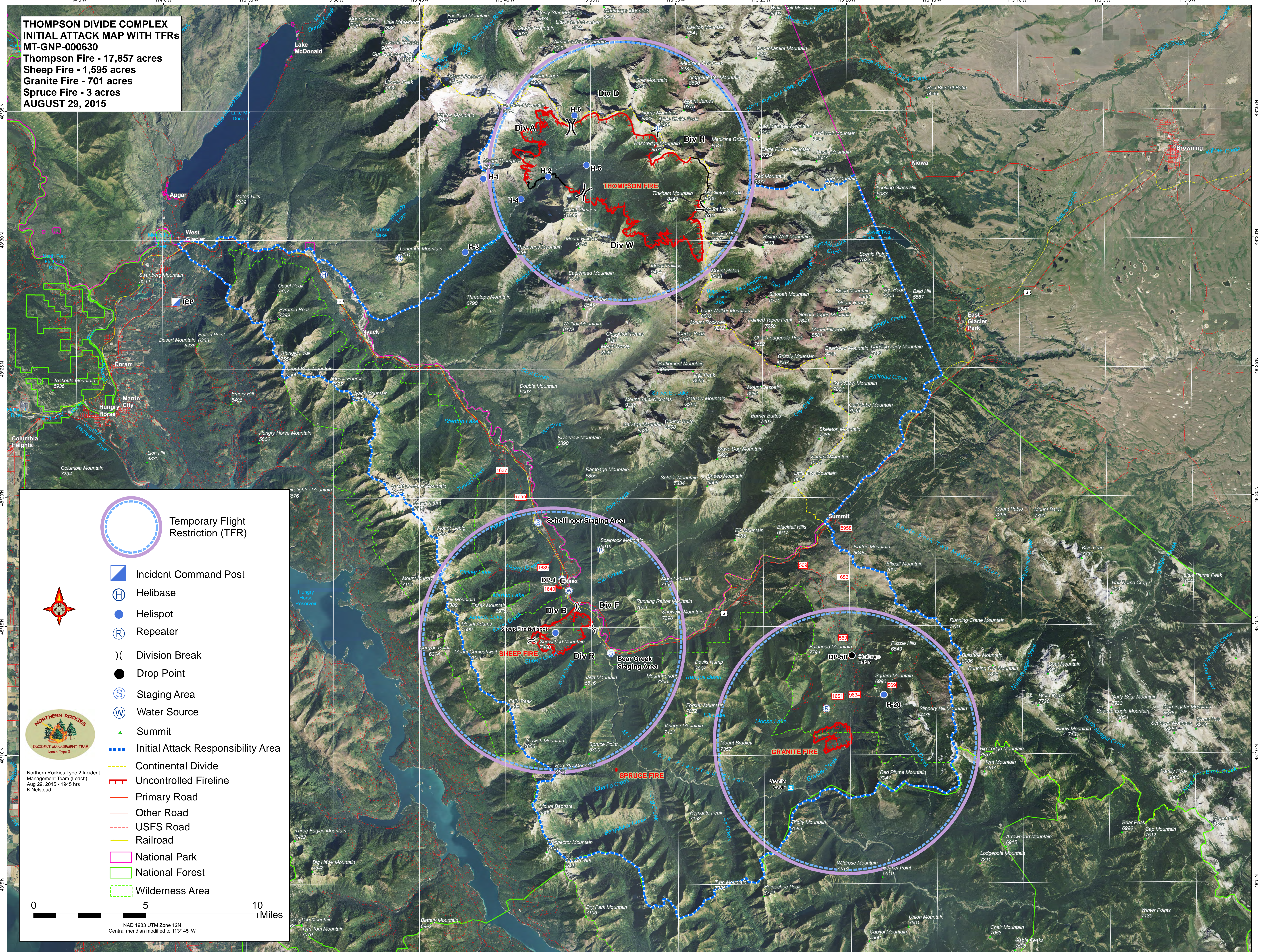


**THOMPSON DIVIDE COMPLEX
INITIAL ATTACK MAP WITH TFRs
MT-GNP-000630**
 Thompson Fire - 17,857 acres
 Sheep Fire - 1,595 acres
 Granite Fire - 701 acres
 Spruce Fire - 3 acres
 AUGUST 29, 2015



Legend

- Temporary Flight Restriction (TFR)
- Incident Command Post
- Helibase
- Helispot
- Repeater
- Division Break
- Drop Point
- Staging Area
- Water Source
- Summit
- Initial Attack Responsibility Area
- Continental Divide
- Uncontrolled Fireline
- Primary Road
- Other Road
- USFS Road
- Railroad
- National Park
- National Forest
- Wilderness Area

NORTHERN ROCKIES
 INCIDENT MANAGEMENT TEAM
 Leach Type 2

Northern Rockies Type 2 Incident Management Team (Leach)
 Aug 29, 2015 - 1945 hrs
 K Nelstead

0 5 10 Miles

NAD 1983 UTM Zone 12N
 Central meridian modified to 113° 45' W