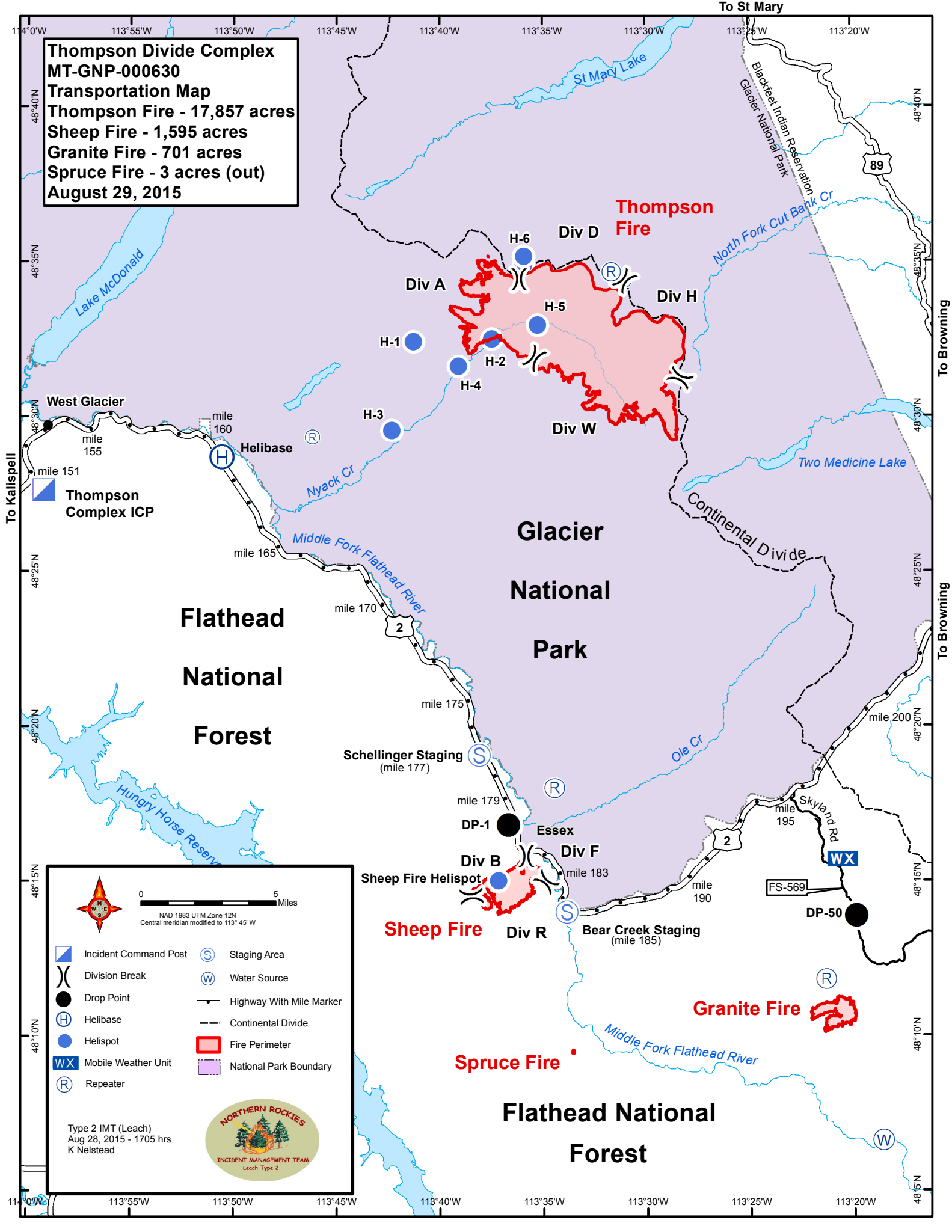



**Thompson Divide Complex**  
**MT-GNP-000630**  
**Transportation Map**  
**Thompson Fire - 17,857 acres**  
**Sheep Fire - 1,595 acres**  
**Granite Fire - 701 acres**  
**Spruce Fire - 3 acres (out)**  
**August 29, 2015**



**Flathead  
National  
Forest**





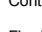

**Glacier  
National  
Park**

**Flathead National  
Forest**



0 5 Miles

NAD 1983 UTM Zone 12N  
Central meridian modified to 113° 45' W

	Incident Command Post		Staging Area
	Division Break		Water Source
	Drop Point		Highway With Mile Marker
	Helibase		Continental Divide
	Helispot		Fire Perimeter
	Mobile Weather Unit		National Park Boundary
	Repeater		

Type 2 IMT (Leach)  
Aug 28, 2015 - 1705 hrs  
K Nelstead



To Kalispell

To St Mary

To Browning

To Browning