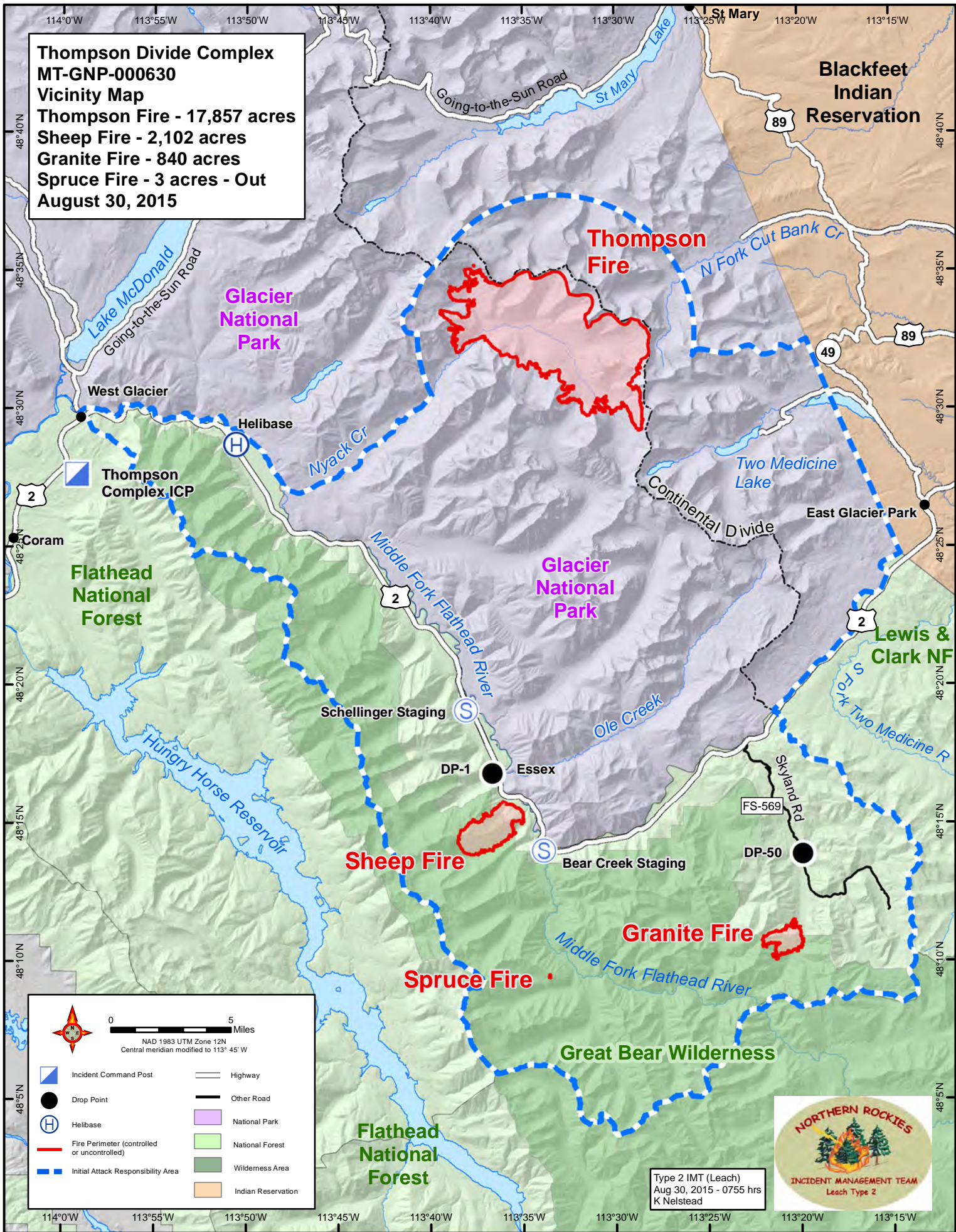


**Thompson Divide Complex
MT-GNP-000630
Vicinity Map**
Thompson Fire - 17,857 acres
Sheep Fire - 2,102 acres
Granite Fire - 840 acres
Spruce Fire - 3 acres - Out
August 30, 2015



Legend

- Incident Command Post
- Drop Point
- Helibase
- Fire Perimeter (controlled or uncontrolled)
- Initial Attack Responsibility Area
- Highway
- Other Road
- National Park
- National Forest
- Wilderness Area
- Indian Reservation

0 5 Miles
 NAD 1983 UTM Zone 12N
 Central meridian modified to 113° 45' W

Type 2 IMT (Leach)
 Aug 30, 2015 - 0755 hrs
 K Nelstead

