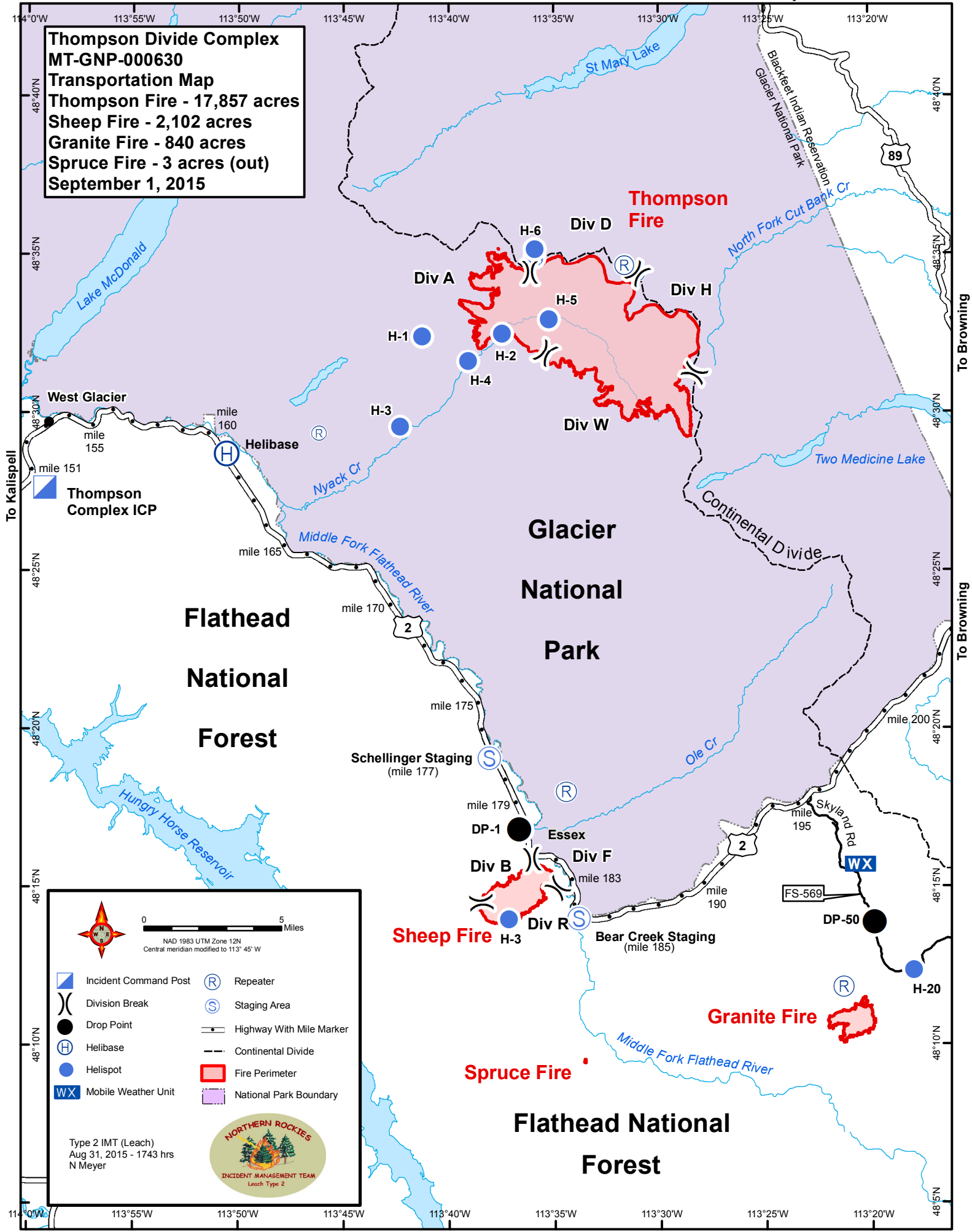


**Thompson Divide Complex**  
**MT-GNP-000630**  
**Transportation Map**  
**Thompson Fire - 17,857 acres**  
**Sheep Fire - 2,102 acres**  
**Granite Fire - 840 acres**  
**Spruce Fire - 3 acres (out)**  
**September 1, 2015**



To Kalispell

To Browning

To Browning








To St Mary


To Kalispell



0 5 Miles

NAD 1983 UTM Zone 12N  
Central meridian modified to 113° 45' W

 Incident Command Post	 Repeater
 Division Break	 Staging Area
 Drop Point	 Highway With Mile Marker
 Helibase	 Continental Divide
 Helispot	 Fire Perimeter
 Mobile Weather Unit	 National Park Boundary



INCIDENT MANAGEMENT TEAM  
Leach Type 2

Type 2 IMT (Leach)  
 Aug 31, 2015 - 1743 hrs  
 N Meyer

To Kalispell