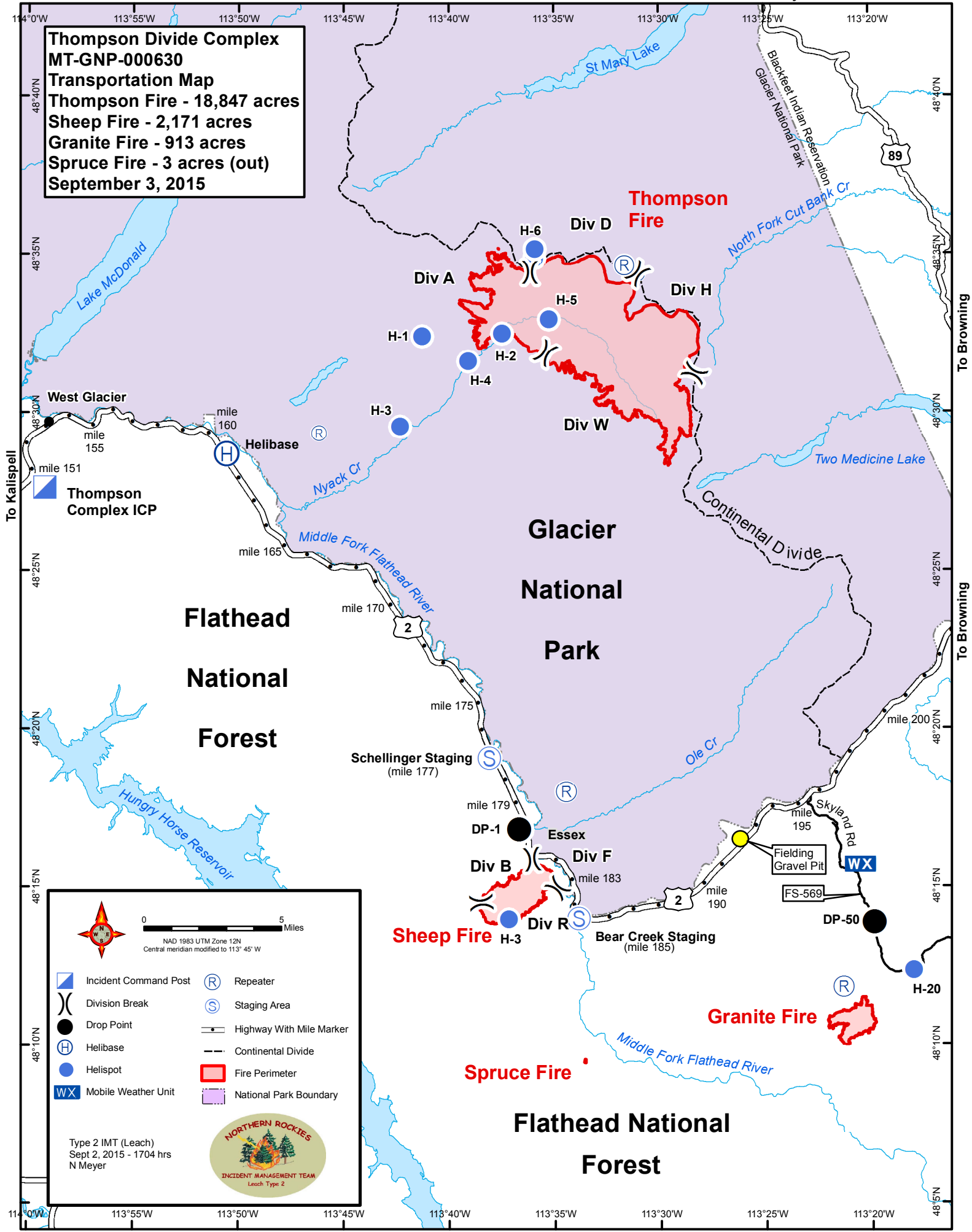


Thompson Divide Complex
MT-GNP-000630
Transportation Map
Thompson Fire - 18,847 acres
Sheep Fire - 2,171 acres
Granite Fire - 913 acres
Spruce Fire - 3 acres (out)
September 3, 2015



**Flathead
National
Forest**



**Glacier
National
Park**


**Flathead National
Forest**



0 5 Miles

NAD 1983 UTM Zone 12N
Central meridian modified to 113° 45' W

	Incident Command Post		Repeater
	Division Break		Staging Area
	Drop Point		Highway With Mile Marker
	Helibase		Continental Divide
	Helispot		Fire Perimeter
	Mobile Weather Unit		National Park Boundary



INCIDENT MANAGEMENT TEAM
Leach Type 2

Type 2 IMT (Leach)
Sept 2, 2015 - 1704 hrs
N Meyer

To Kalispell

To Browning

To Browning

To St Mary

To Kalispell

To Kalispell