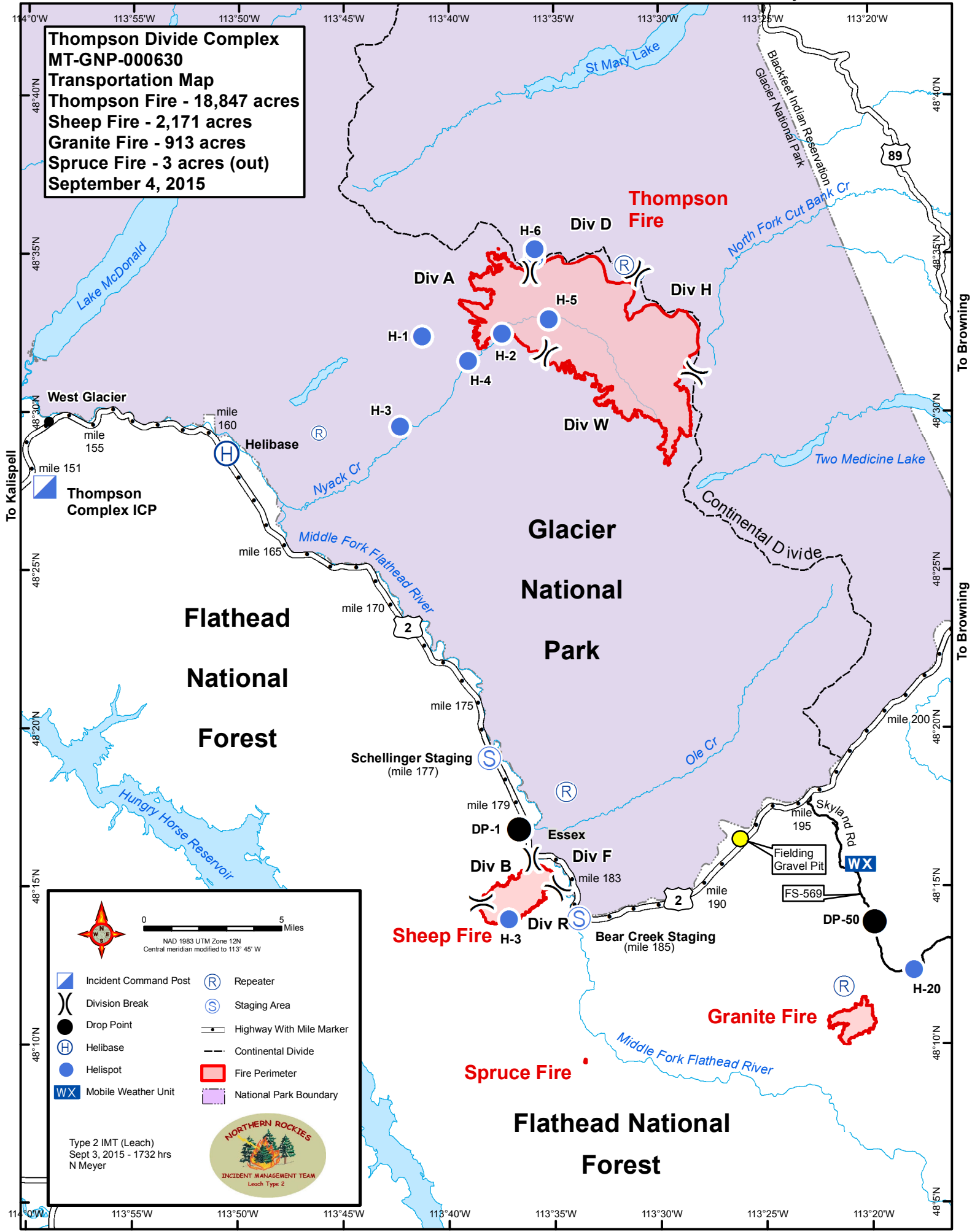



Thompson Divide Complex
MT-GNP-000630
Transportation Map
Thompson Fire - 18,847 acres
Sheep Fire - 2,171 acres
Granite Fire - 913 acres
Spruce Fire - 3 acres (out)
September 4, 2015



**Flathead
National
Forest**







**Glacier
National
Park**


**Flathead National
Forest**



0 5 Miles

NAD 1983 UTM Zone 12N
Central meridian modified to 113° 45' W

	Incident Command Post		Repeater
	Division Break		Staging Area
	Drop Point		Highway With Mile Marker
	Helibase		Continental Divide
	Helispot		Fire Perimeter
	Mobile Weather Unit		National Park Boundary



Type 2 IMT (Leach)
Sept 3, 2015 - 1732 hrs
N Meyer

To Kalispell

To St Mary

To Browning

To Browning

89

2

2

2

mile 151

mile 155

mile 160

mile 165

mile 170

mile 175

mile 179

mile 183

mile 195

mile 190

mile 200

mile 200

DP-50

Bear Creek Staging
(mile 185)

Schellinger Staging
(mile 177)

Essex

Skylend Rd

Fielding
Gravel Pit

FS-569

West Glacier

Helibase

Nyack Cr

Middle Fork Flathead River

North Fork Cut Bank Cr

Two Medicine Lake

Continental Divide

Ole Cr

Middle Fork Flathead River

St Mary Lake

Lake McDonald

Hungry Horse Reservoir

Blackfeet Indian Reservation
Glacier National Park

Div D

Div A

Div H

Div W

Div F

Div R

Div B

Thompson Fire

Sheep Fire

Granite Fire

Spruce Fire

H-6

H-5

H-2

H-4

H-1

H-3

H-3

H-20

114°0'W 113°55'W 113°50'W 113°45'W 113°40'W 113°35'W 113°30'W 113°25'W 113°20'W 48°10'N 48°15'N 48°20'N 48°25'N 48°30'N 48°35'N 48°40'N