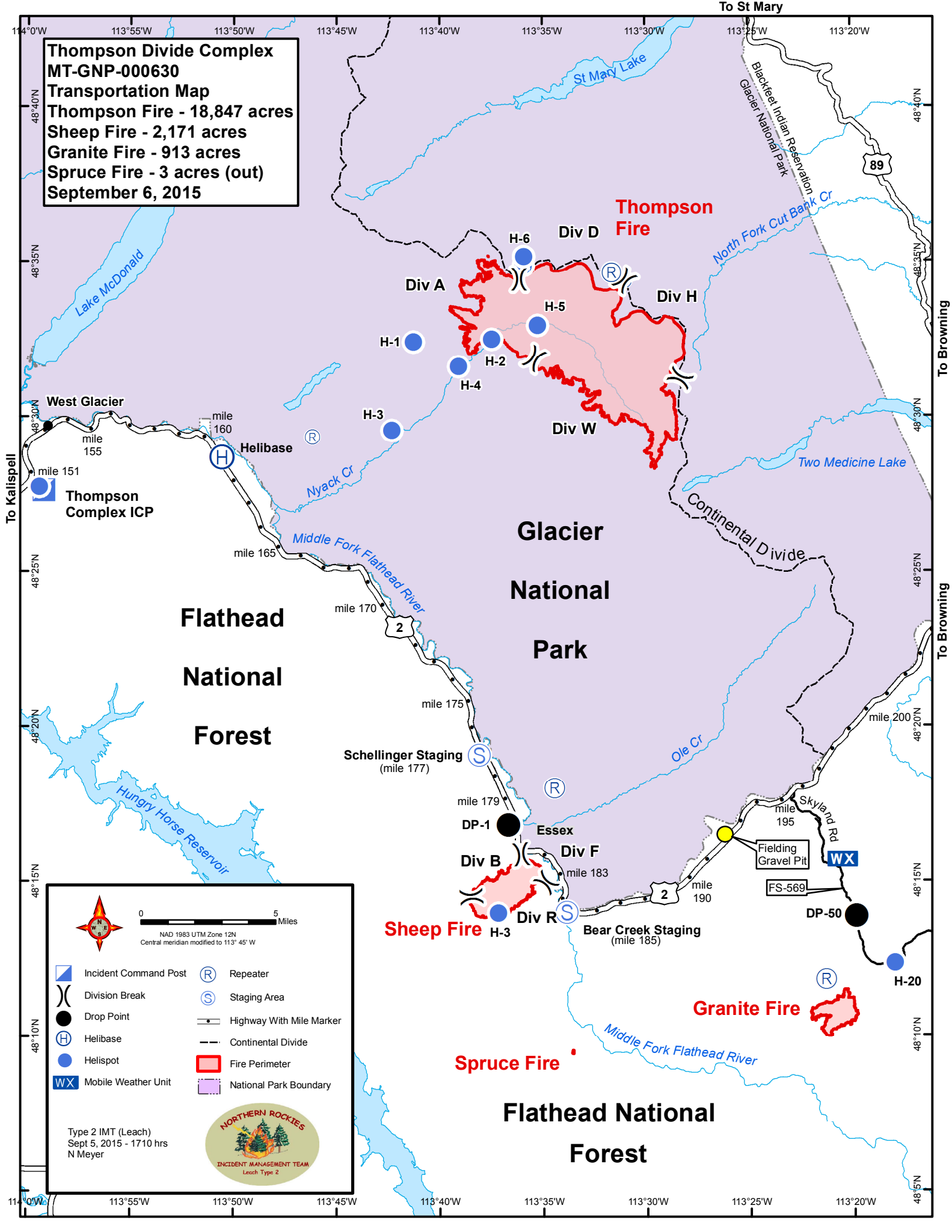


Thompson Divide Complex
MT-GNP-000630
Transportation Map
Thompson Fire - 18,847 acres
Sheep Fire - 2,171 acres
Granite Fire - 913 acres
Spruce Fire - 3 acres (out)
September 6, 2015



**Flathead
National
Forest**

**Glacier
National
Park**


**Flathead National
Forest**



0 5 Miles

NAD 1983 UTM Zone 12N
Central meridian modified to 113° 45' W

	Incident Command Post		Repeater
	Division Break		Staging Area
	Drop Point		Highway With Mile Marker
	Helibase		Continental Divide
	Helispot		Fire Perimeter
	Mobile Weather Unit		National Park Boundary



Type 2 IMT (Leach)
Sept 5, 2015 - 1710 hrs
N Meyer

To Kalispell

To Browning

To Browning

To St Mary

To Kalispell

To Kalispell