

113°38'0"W

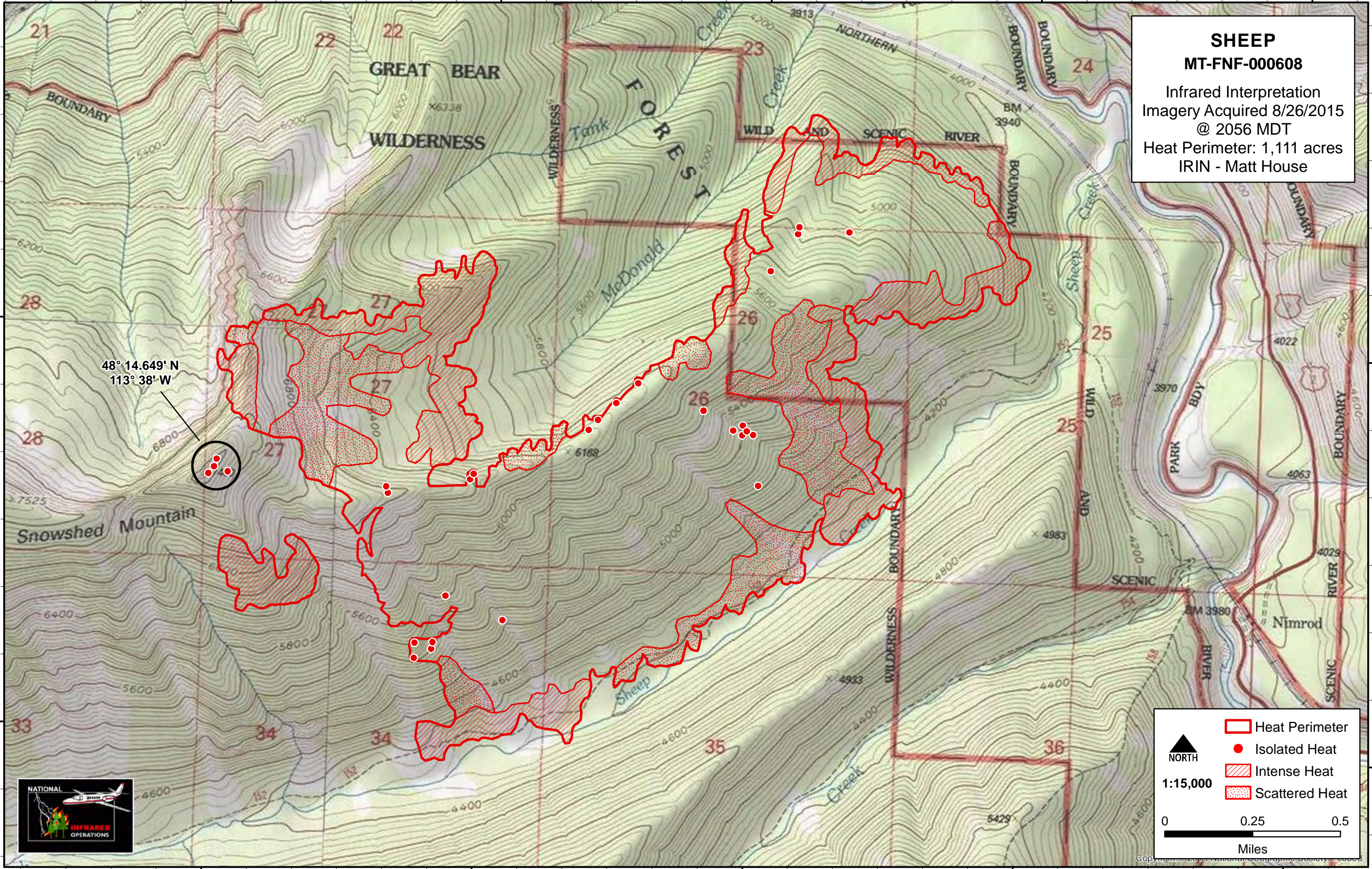
113°37'0"W

113°36'0"W

113°35'0"W

113°34'0"W

SHEEP
MT-FNF-000608
 Infrared Interpretation
 Imagery Acquired 8/26/2015
 @ 2056 MDT
 Heat Perimeter: 1,111 acres
 IRIN - Matt House



48° 14.649' N
 113° 38' W



		Heat Perimeter
		Isolated Heat
		Intense Heat
		Scattered Heat

1:15,000

0 0.25 0.5

Miles



113°38'0"W

113°37'0"W

113°36'0"W

113°35'0"W

113°34'0"W

Copyright © 2015 National Geographic Society, Inc.