

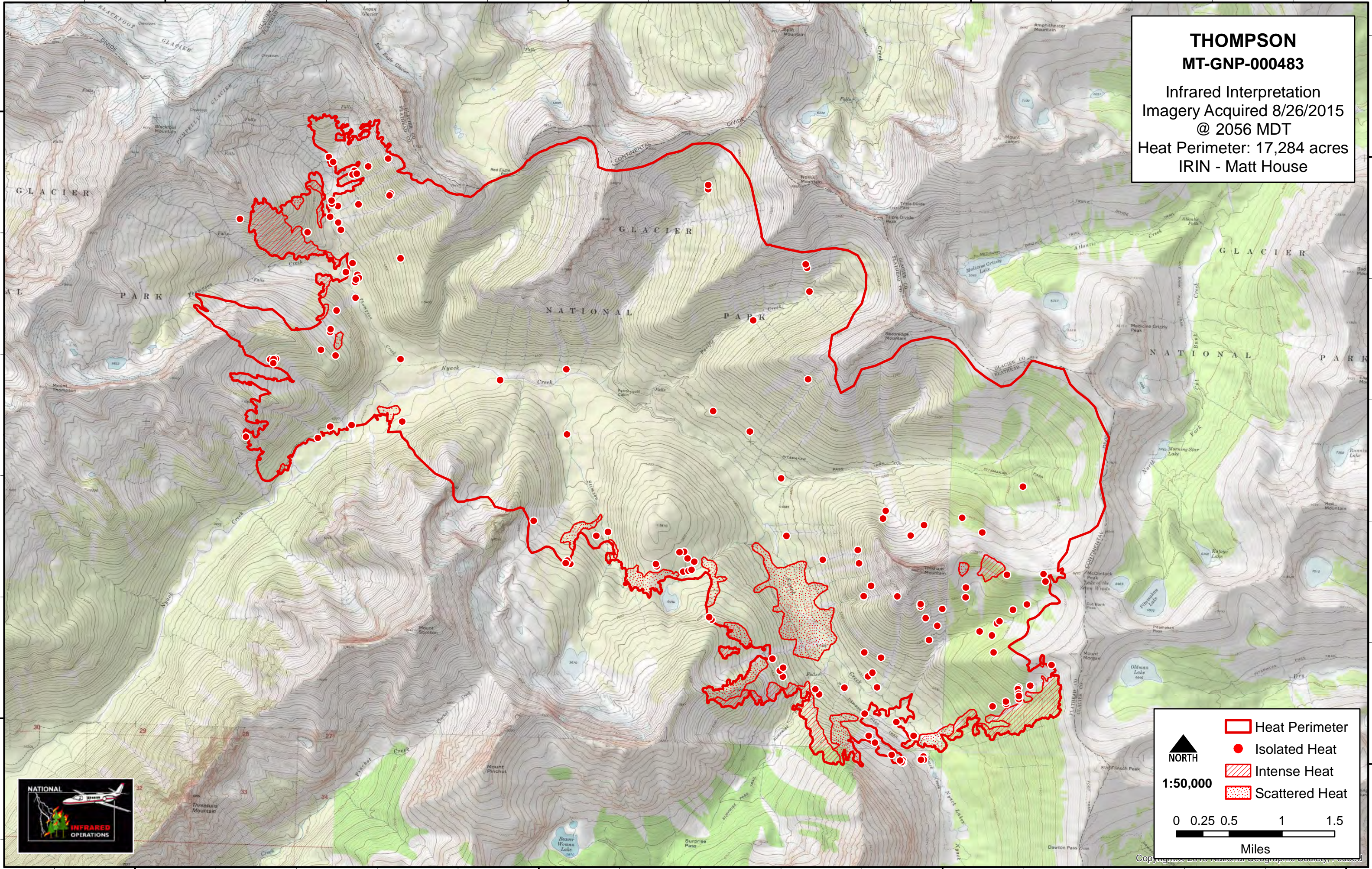
113°40'0"W

113°35'0"W

113°30'0"W

**THOMPSON**  
**MT-GNP-000483**

Infrared Interpretation  
 Imagery Acquired 8/26/2015  
 @ 2056 MDT  
 Heat Perimeter: 17,284 acres  
 IRIN - Matt House



**Legend**

- Heat Perimeter
- Isolated Heat
- Intense Heat
- Scattered Heat

**Scale**  
 0 0.25 0.5 1 1.5  
 Miles



48°35'0"N

48°30'0"N

48°35'0"N

48°30'0"N

113°40'0"W

113°35'0"W

113°30'0"W

113°25'0"W

Copyright © 2015 National Geographic Society, Inc.