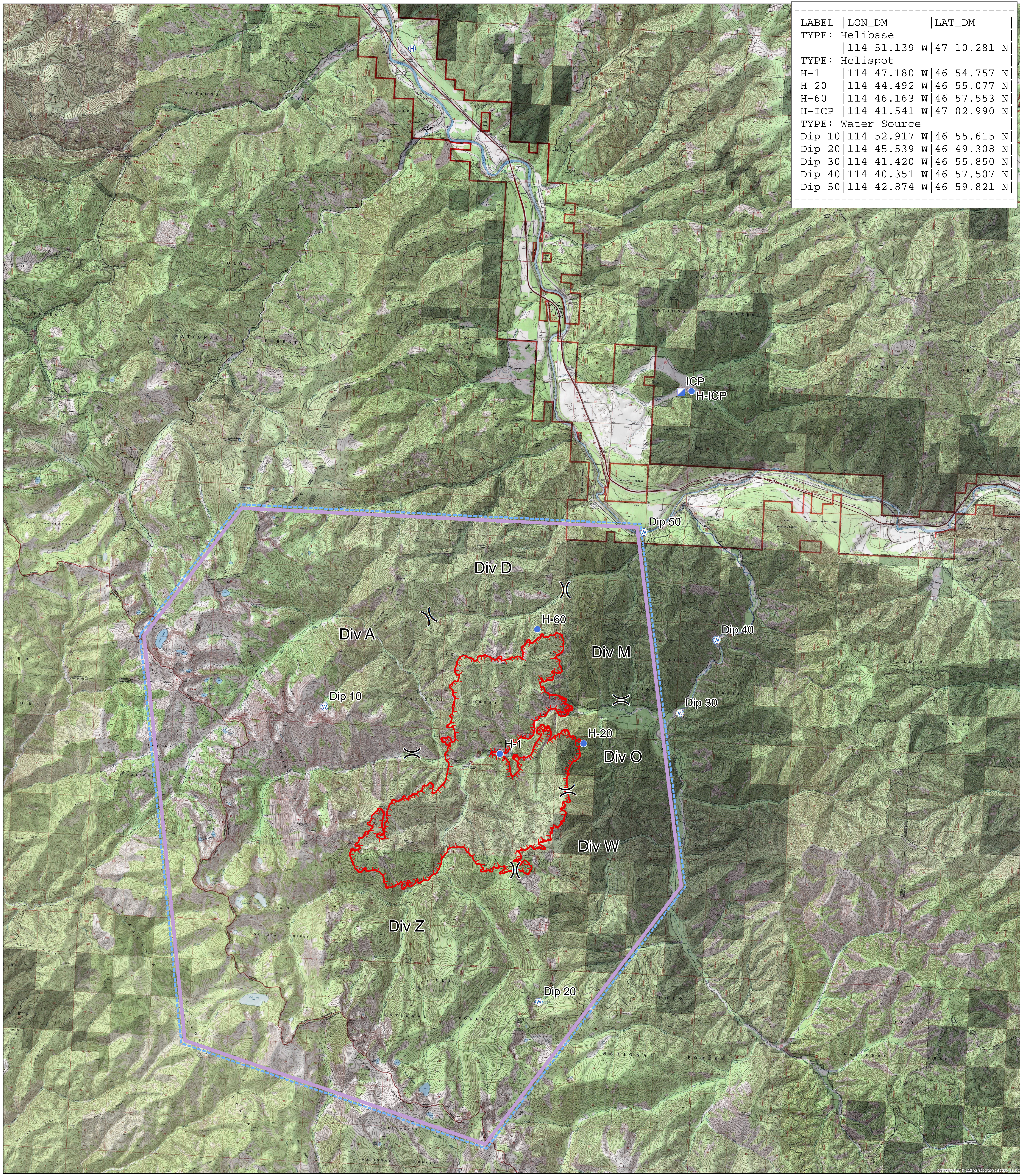


LABEL	LON_DM	LAT_DM
TYPE: Helibase	114 51.139 W	47 10.281 N
TYPE: Helispot		
H-1	114 47.180 W	46 54.757 N
H-20	114 44.492 W	46 55.077 N
H-60	114 46.163 W	46 57.553 N
H-ICP	114 41.541 W	47 02.990 N
TYPE: Water Source		
Dip 10	114 52.917 W	46 55.615 N
Dip 20	114 45.539 W	46 49.308 N
Dip 30	114 41.420 W	46 55.850 N
Dip 40	114 40.351 W	46 57.507 N
Dip 50	114 42.874 W	46 59.821 N



West Fork Fish Creek - Aviation - September 4, 2015

MT-LNF-0834 - 12,2863 Acres



-)) Division
- Uncontrolled Fire Edge
- Helibase
- Incident Command Post
- TFR 9,000 MSL
- Helispot
- Water Source

