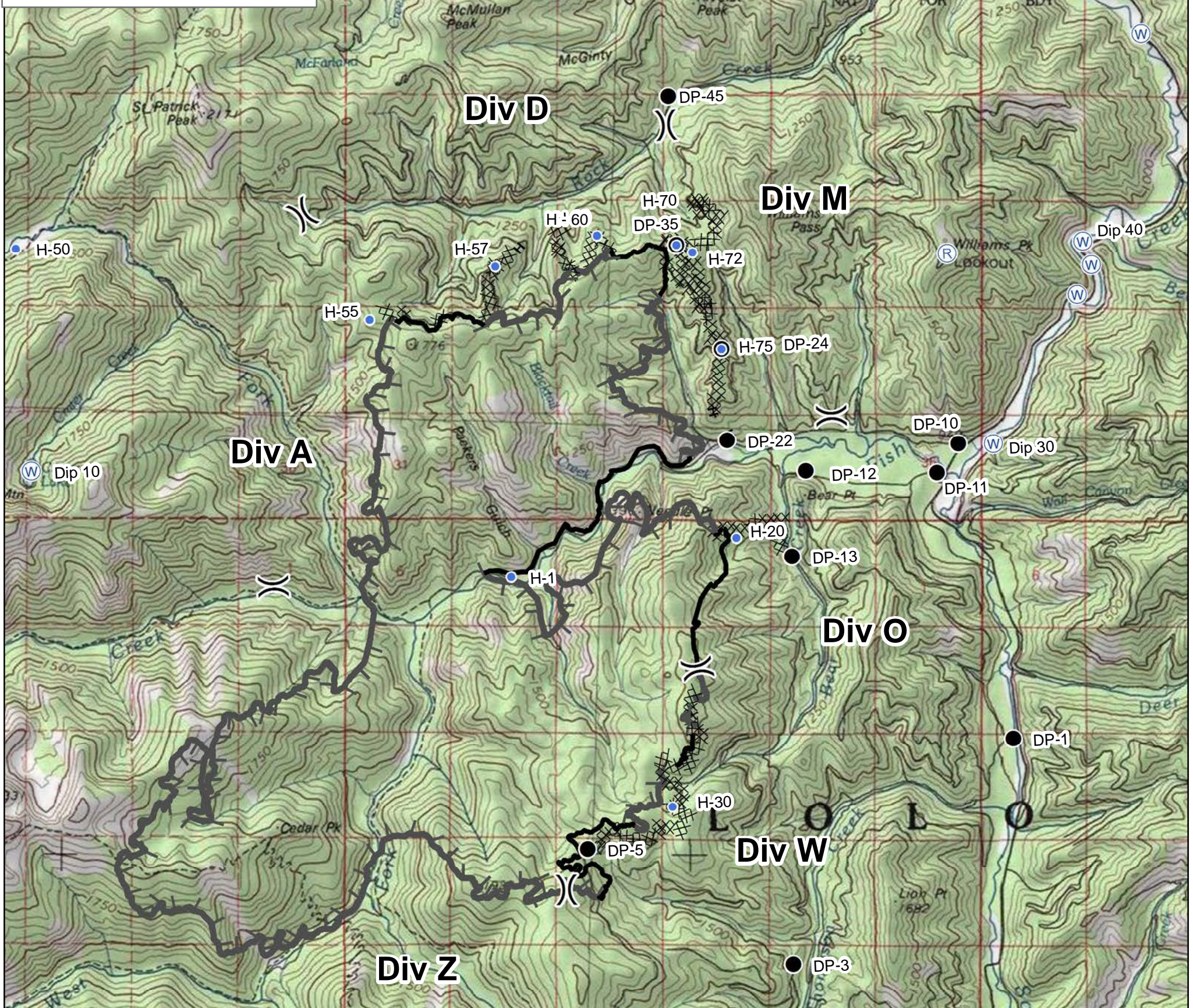


| LABEL | LON_DM | LAT_DM |
|----------------|--------------|-------------|
| TYPE: Helibase | 114 51.139 W | 47 10.281 N |
| TYPE: Helispot | | |
| H-1 | 114 47.180 W | 46 54.757 N |
| H-20 | 114 44.492 W | 46 55.077 N |
| H-30 | 114 45.252 W | 46 52.875 N |
| H-50 | 114 53.108 W | 46 57.437 N |
| H-55 | 114 48.877 W | 46 56.860 N |
| H-57 | 114 47.378 W | 46 57.298 N |
| H-60 | 114 46.163 W | 46 57.553 N |
| H-70 | 114 45.212 W | 46 57.476 N |
| H-72 | 114 45.022 W | 46 57.417 N |
| H-75 | 114 44.670 W | 46 56.625 N |
| H-ICP | 114 41.541 W | 47 02.990 N |



| LABEL | LON_DM | LAT_DM |
|------------------|--------------|-------------|
| TYPE: Drop Point | | |
| DP-1 | 114 41.185 W | 46 53.436 N |
| DP-10 | 114 41.842 W | 46 55.850 N |
| DP-11 | 114 42.097 W | 46 55.613 N |
| DP-12 | 114 43.662 W | 46 55.627 N |
| DP-13 | 114 43.828 W | 46 54.927 N |
| DP-22 | 114 44.605 W | 46 55.876 N |
| DP-24 | 114 44.670 W | 46 56.625 N |
| DP-3 | 114 43.809 W | 46 51.587 N |
| DP-35 | 114 45.212 W | 46 57.476 N |
| DP-40 | 114 41.580 W | 47 00.409 N |
| DP-41 | 114 41.556 W | 47 00.464 N |
| DP-45 | 114 45.312 W | 46 58.690 N |
| DP-5 | 114 46.265 W | 46 52.528 N |

| LABEL | LON_DM | LAT_DM |
|--------------------|--------------|-------------|
| TYPE: Water Source | | |
| WS | 114 41.635 W | 47 00.377 N |
| WS | 114 39.654 W | 46 59.208 N |
| WS | 114 40.416 W | 46 57.070 N |
| WS | 114 40.249 W | 46 57.315 N |
| Dip 10 | 114 52.917 W | 46 55.615 N |
| Dip 20 | 114 45.539 W | 46 49.308 N |
| Dip 30 | 114 41.420 W | 46 55.850 N |
| Dip 40 | 114 40.351 W | 46 57.507 N |
| Dip 50 | 114 42.874 W | 46 59.821 N |



Incident Action Plan Map 12,283 Acres

West Fork Fish Creek Fire - MT-LNF-0834 - September 6, 2015



)(Division
 ● Helispot
 W Water Source
 Uncontrolled Fire Edge
 Completed Line
R Repeater
XXXXXX Completed Dozer Line
H · H · Hand Line
● Drop Point

