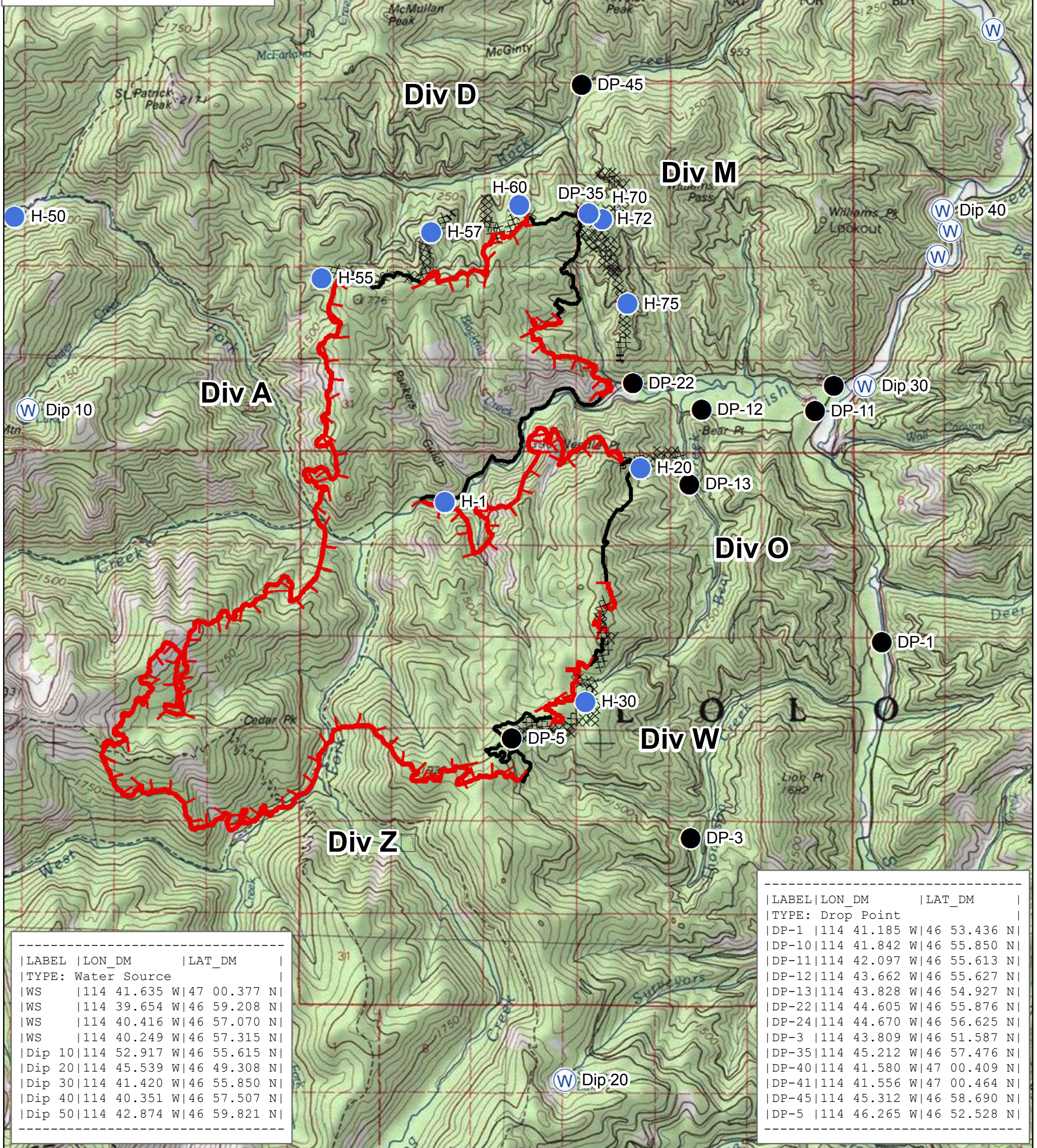


LABEL	LON_DM	LAT_DM
TYPE: Helibase		
	114 51.139 W	47 10.281 N
TYPE: Helispot		
H-1	114 47.180 W	46 54.757 N
H-20	114 44.492 W	46 55.077 N
H-30	114 45.252 W	46 52.875 N
H-50	114 53.108 W	46 57.437 N
H-55	114 48.877 W	46 56.860 N
H-57	114 47.378 W	46 57.298 N
H-60	114 46.163 W	46 57.553 N
H-70	114 45.212 W	46 57.476 N
H-72	114 45.022 W	46 57.417 N
H-75	114 44.670 W	46 56.625 N
H-ICP	114 41.541 W	47 02.990 N



LABEL	LON_DM	LAT_DM
TYPE: Water Source		
WS	114 41.635 W	47 00.377 N
WS	114 39.654 W	46 59.208 N
WS	114 40.416 W	46 57.070 N
WS	114 40.249 W	46 57.315 N
Dip 10	114 52.917 W	46 55.615 N
Dip 20	114 45.539 W	46 49.308 N
Dip 30	114 41.420 W	46 55.850 N
Dip 40	114 40.351 W	46 57.507 N
Dip 50	114 42.874 W	46 59.821 N

LABEL	LON_DM	LAT_DM
TYPE: Drop Point		
DP-1	114 41.185 W	46 53.436 N
DP-10	114 41.842 W	46 55.850 N
DP-11	114 42.097 W	46 55.613 N
DP-12	114 43.662 W	46 55.627 N
DP-13	114 43.828 W	46 54.927 N
DP-22	114 44.605 W	46 55.876 N
DP-24	114 44.670 W	46 56.625 N
DP-3	114 43.809 W	46 51.587 N
DP-35	114 45.212 W	46 57.476 N
DP-40	114 41.580 W	47 00.409 N
DP-41	114 41.556 W	47 00.464 N
DP-45	114 45.312 W	46 58.690 N
DP-5	114 46.265 W	46 52.528 N

Incident Action Plan Map 11,695 Acres West Fork Fish Creek Fire - MT-LNF-0834 - September 7, 2015



- Drop Point
- (W) Water Source
- XXXXX Completed Dozer Line
- Helispot
- [Red Line] Uncontrolled Fire Edge
- [Black Line] Completed Line
- H · H · Hand Line

