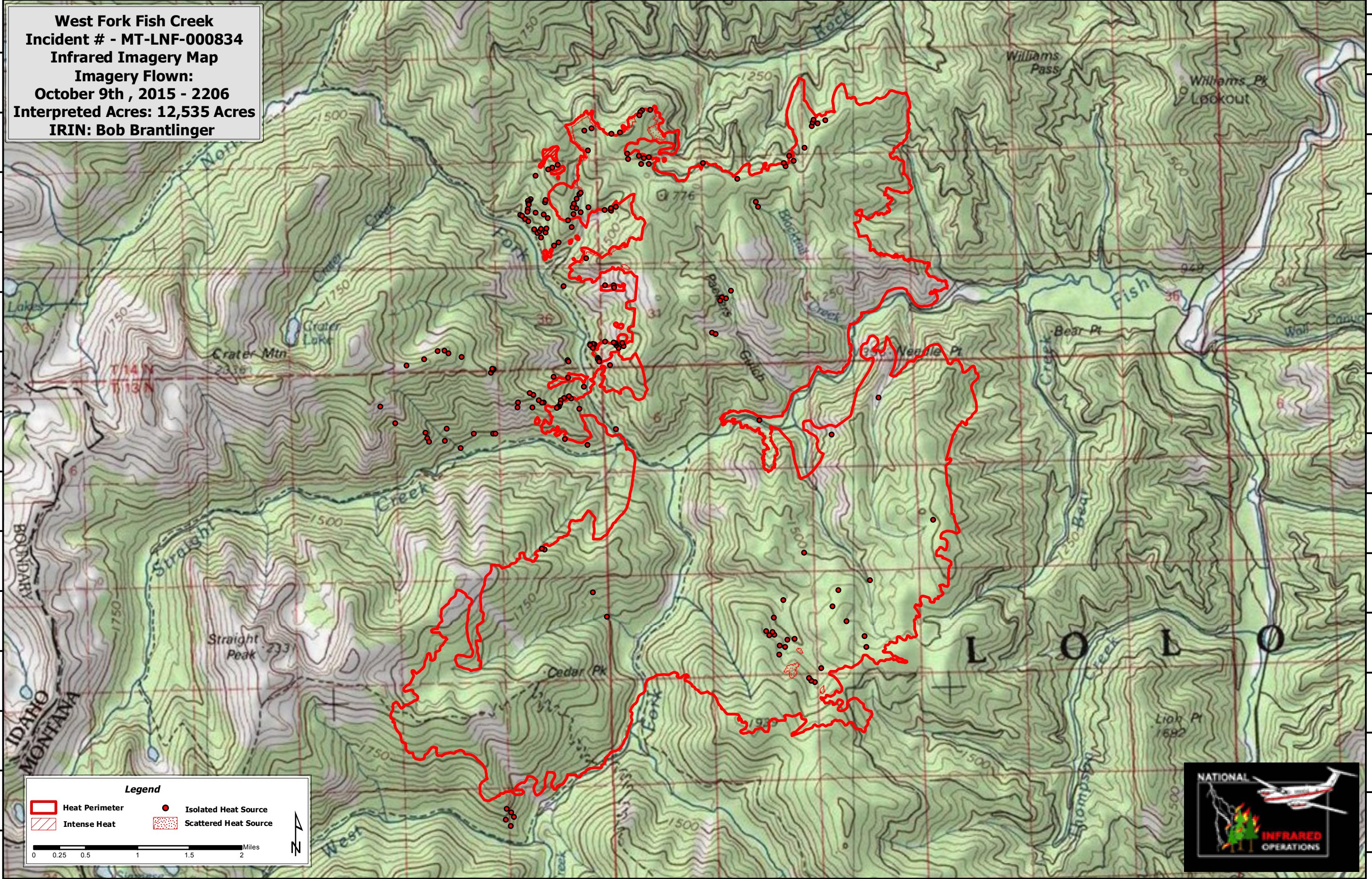


114°56'0"W 114°55'0"W 114°54'0"W 114°53'0"W 114°52'0"W 114°51'0"W 114°50'0"W 114°49'0"W 114°48'0"W 114°47'0"W 114°46'0"W 114°45'0"W 114°44'0"W 114°43'0"W 114°42'0"W 114°41'0"W 114°40'0"W

West Fork Fish Creek
Incident # - MT-LNF-000834
Infrared Imagery Map
Imagery Flown:
October 9th , 2015 - 2206
Interpreted Acres: 12,535 Acres
IRIN: Bob Brantlinger



46°58'0"N
46°57'30"N
46°57'0"N
46°56'30"N
46°56'0"N
46°55'30"N
46°55'0"N
46°54'30"N
46°54'0"N
46°53'30"N
46°53'0"N
46°52'30"N
46°52'0"N
46°51'30"N
46°51'0"N

114°56'30"W 114°55'30"W 114°54'30"W 114°53'30"W 114°52'30"W 114°51'30"W 114°50'30"W 114°49'30"W 114°48'30"W 114°47'30"W 114°46'30"W 114°45'30"W 114°44'30"W 114°43'30"W 114°42'30"W 114°41'30"W 114°40'30"W

