
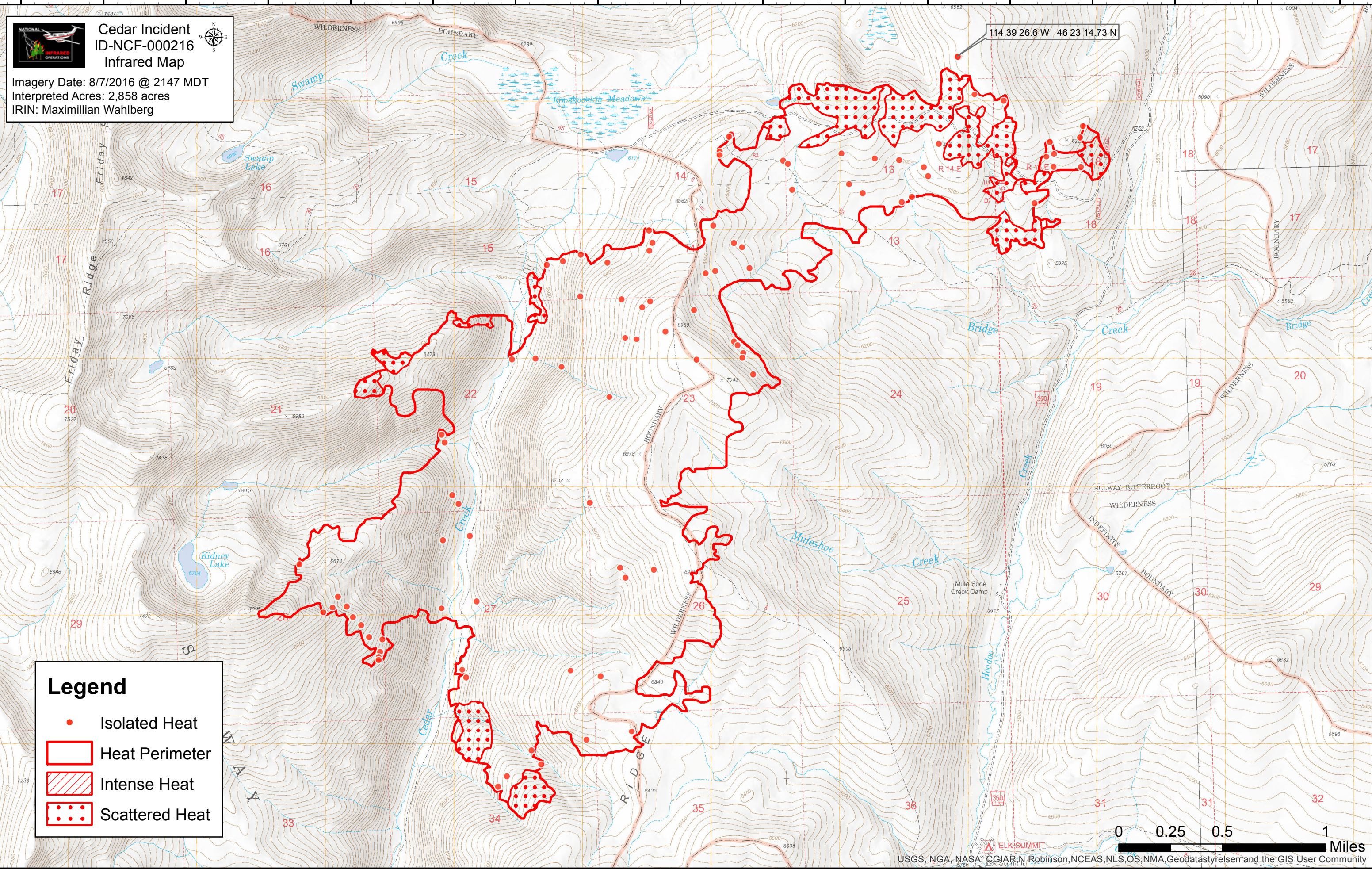


114°44'30"W 114°44'0"W 114°43'30"W 114°43'0"W 114°42'30"W 114°42'0"W 114°41'30"W 114°41'0"W 114°40'30"W 114°40'0"W 114°39'30"W 114°39'0"W 114°38'30"W 114°38'0"W 114°37'30"W 114°37'0"W 114°36'30"W

 **Cedar Incident**  
**ID-NCF-000216**  
**Infrared Map**

Imagery Date: 8/7/2016 @ 2147 MDT  
 Interpreted Acres: 2,858 acres  
 IRIN: Maximilian Wahlberg

114 39 26.6 W 46 23 14.73 N



**Legend**

- Isolated Heat
- Heat Perimeter
- Intense Heat
- Scattered Heat

0 0.25 0.5 1 Miles

USGS, NGA, NASA, CGIAR, N Robinson, NCEAS, NLS, OS, NMA, Geodatastyreisen and the GIS User Community

114°44'30"W 114°44'0"W 114°43'30"W 114°43'0"W 114°42'30"W 114°42'0"W 114°41'30"W 114°41'0"W 114°40'30"W 114°40'0"W 114°39'30"W 114°39'0"W 114°38'30"W 114°38'0"W 114°37'30"W 114°37'0"W 114°36'30"W