

114°43'W 114°42'W 114°41'W 114°40'W 114°39'W 114°38'W

Cedar Fire ID-NCF-000216 Infrared Heat Sources

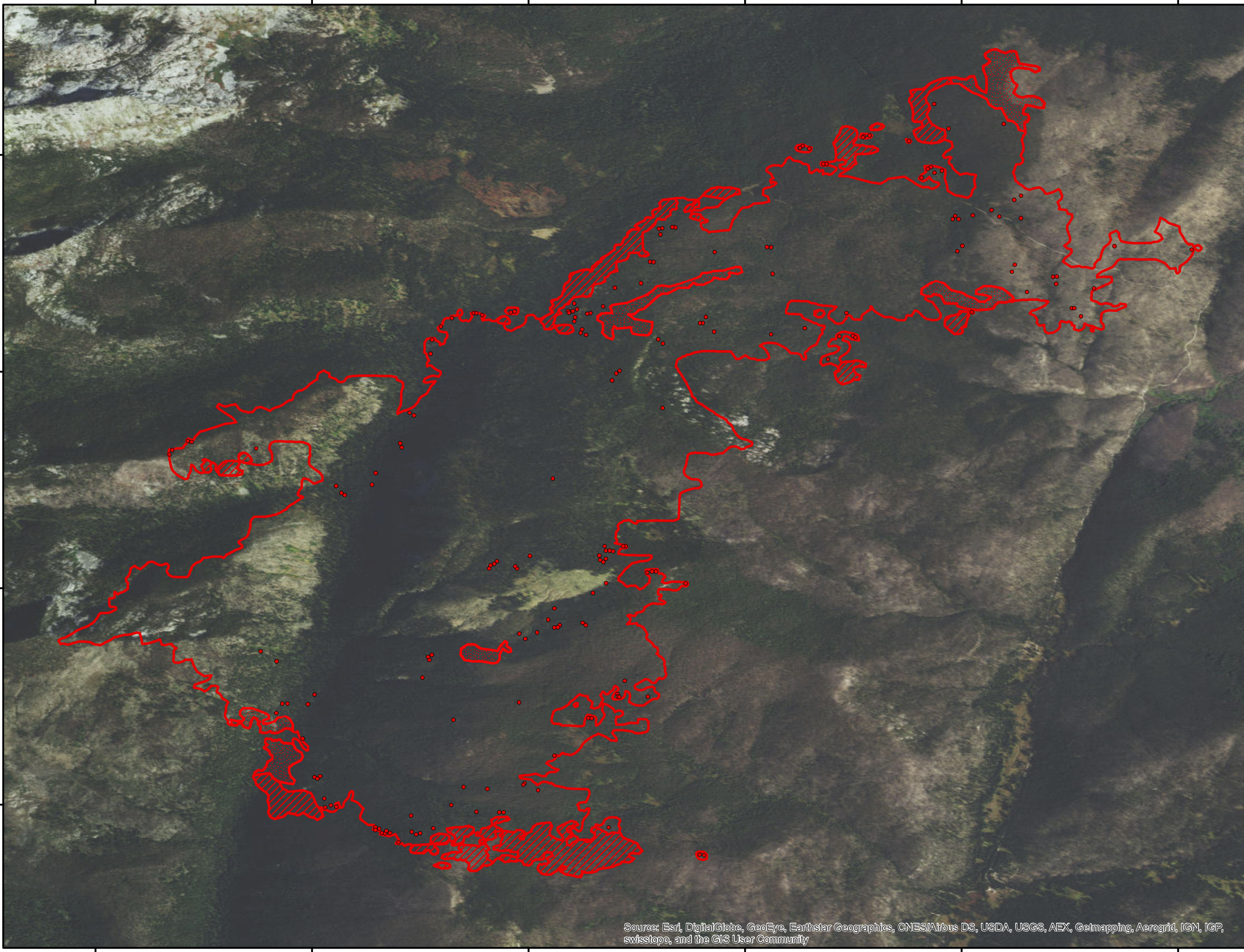
1:31,000

- Heat Perimeter
- Intense Heat Areas
- Scattered Heat Areas
- Isolated Heat Sources

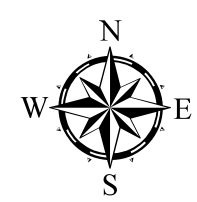
GCS North American 1983

46°23'N
46°22'N
46°21'N
46°20'N

46°23'N
46°22'N
46°21'N
46°20'N



0 0.25 0.5 1 Miles



Source: Esri, DigitalGlobe, GeoEye, Earthstar Geographics, CNES/Airbus DS, USDA, USGS, AEX, Getmapping, Aerogrid, IGN, IGP, swisstopo, and the GIS User Community

IR Interpreter: Brian Monroe
IR interpreted acres: 3,631
Date:08/23/2016
Time received the Image: 2217 hrs

114°43'W 114°42'W 114°41'W 114°40'W 114°39'W 114°38'W