





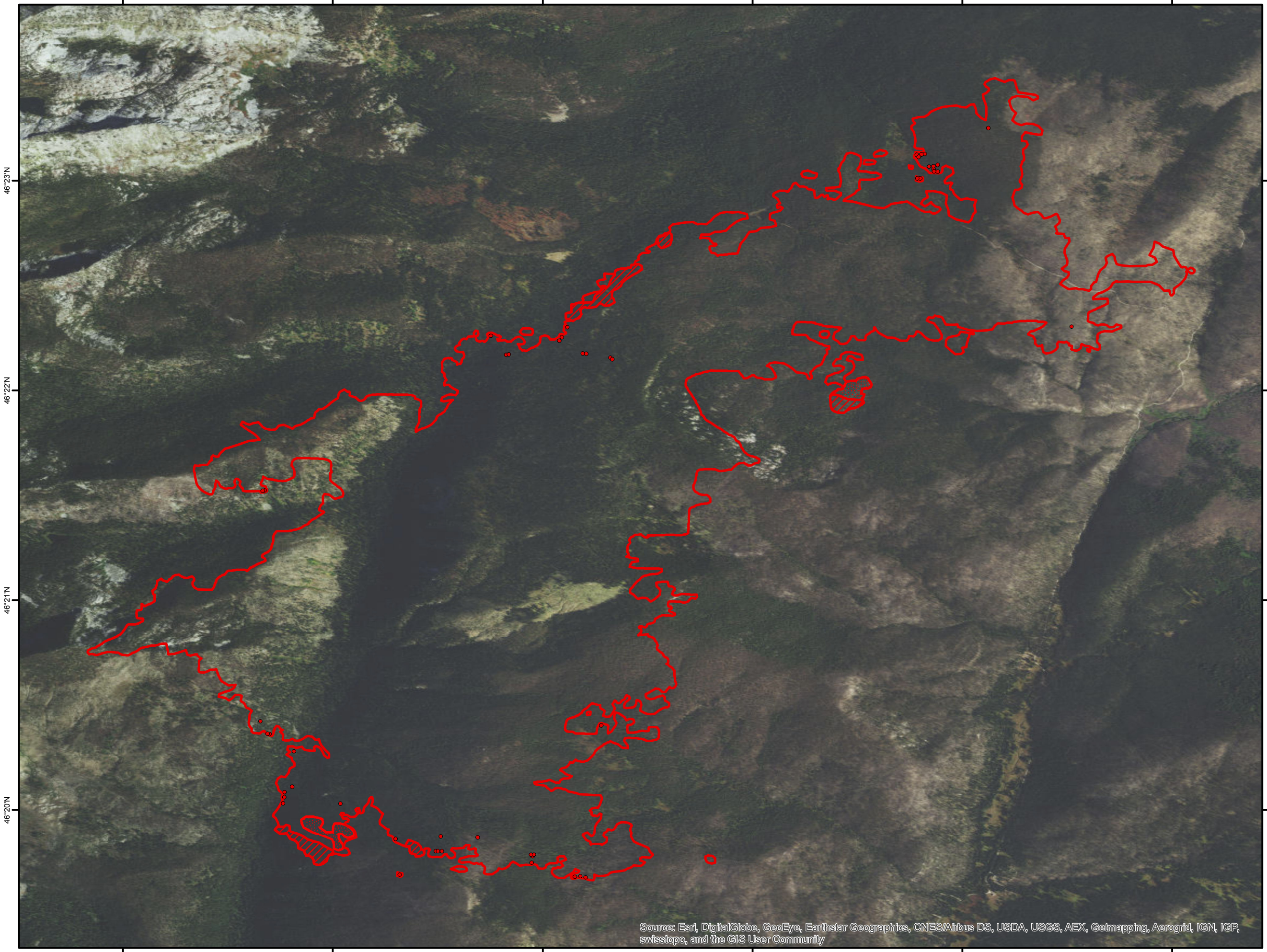
114°43'W 114°42'W 114°41'W 114°40'W 114°39'W 114°38'W

# Cedar Fire ID-NCF-000216 Infrared Heat Sources

1:32,000

-  Heat Perimeter
-  Intense Heat Areas
-  Scattered Heat Areas
-  Isolated Heat Sources

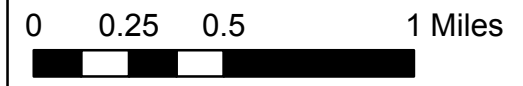
GCS North American 1983



46°23'N  
46°22'N  
46°21'N  
46°20'N

46°23'N  
46°22'N  
46°21'N  
46°20'N

114°43'W 114°42'W 114°41'W 114°40'W 114°39'W 114°38'W



Source: Esri, DigitalGlobe, GeoEye, Earthstar Geographics, CNES/Airbus DS, USDA, USGS, AEX, Getmapping, Aerogrid, IGN, IGP, swisstopo, and the GIS User Community

IR Interpreter: Brian Monroe  
IR interpreted acres: 3,682  
Date:08/25/2016  
Time received the Image: 0157 hrs