

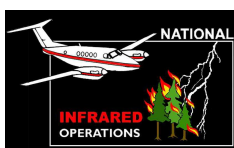
114°43'W 114°42'W 114°41'W 114°40'W 114°39'W 114°38'W

Moose Fire Infrared Map
 ID-NCF-000369
 Map Date: 08/31/2016
 Imagery Date: 08/30/2016
 Imagery Time: 2146 MDT
 IR Interpreted Acres: 4,404
 IRIN: Tammy Hocut

- Isolated Heat Sources
- Heat Perimeter
- ▨ Intense Heat
- ⋯ Scattered Heat

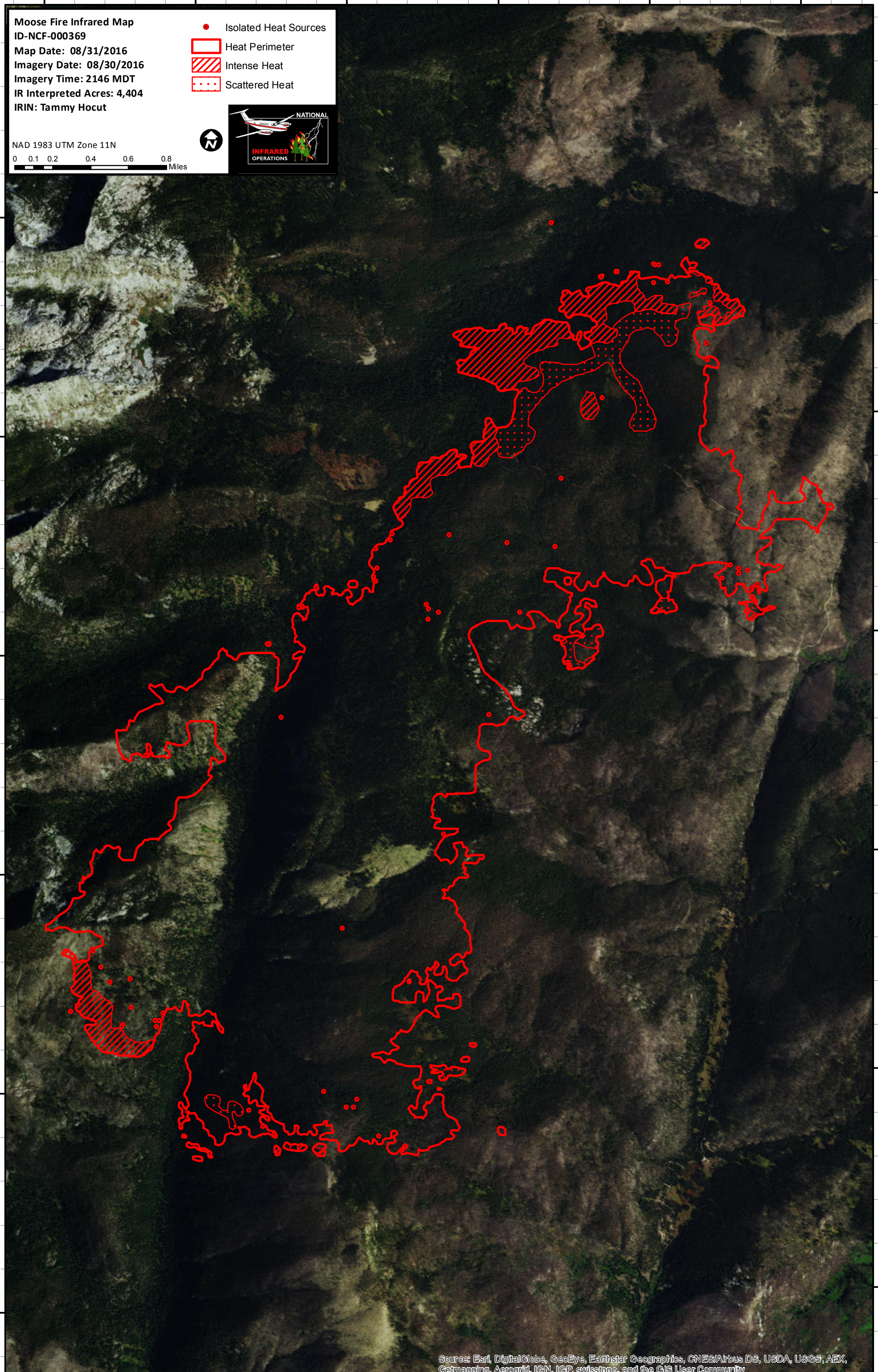
NAD 1983 UTM Zone 11N

0 0.1 0.2 0.4 0.6 0.8 Miles



46°24'N
46°23'N
46°22'N
46°21'N
46°20'N
46°19'N

46°24'N
46°23'N
46°22'N
46°21'N
46°20'N
46°19'N



Source: Esri, DigitalGlobe, GeoEye, Earthstar Geographics, CNES/Airbus DS, USDA, USGS, AEX, Getmapping, Aerogrid, IGN, IGP, swisstopo, and the GIS User Community

114°43'W 114°42'W 114°41'W 114°40'W 114°39'W 114°38'W