

114°44'0"W 114°43'0"W 114°42'0"W 114°41'0"W 114°40'0"W 114°39'0"W 114°38'0"W 114°37'0"W





# Cedar Fire ID-NCF-216

## Infrared Map

Flown Sept 1, 2016 @ 2258 PDT

IR Interpreted Size: 4786 acres

S. Stitt, IRIN

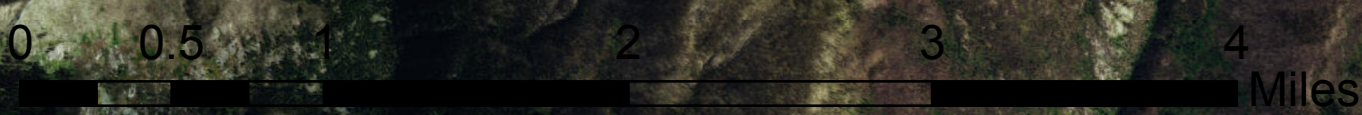
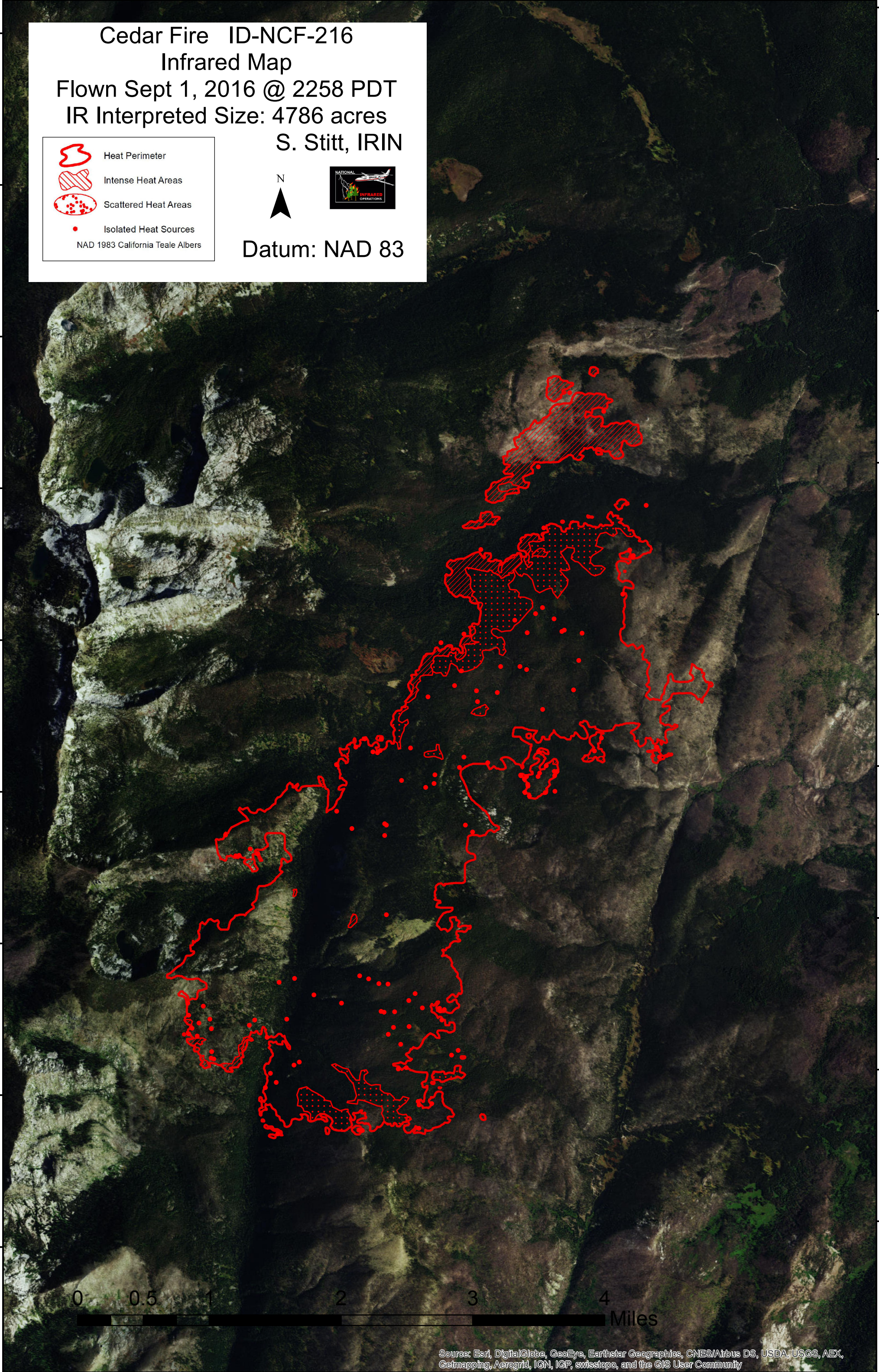
-  Heat Perimeter
  -  Intense Heat Areas
  -  Scattered Heat Areas
  -  Isolated Heat Sources
- NAD 1983 California Teale Albers



Datum: NAD 83

46°27'0"N  
46°26'0"N  
46°25'0"N  
46°24'0"N  
46°23'0"N  
46°22'0"N  
46°21'0"N  
46°20'0"N  
46°19'0"N

46°27'0"N  
46°26'0"N  
46°25'0"N  
46°24'0"N  
46°23'0"N  
46°22'0"N  
46°21'0"N  
46°20'0"N  
46°19'0"N



Source: Esri, DigitalGlobe, GeoEye, Earthstar Geographics, CNES/Airbus DS, USDA, USGS, AEX, Getmapping, Aerogrid, IGN, IGP, swisstopo, and the GIS User Community

114°44'0"W 114°43'0"W 114°42'0"W 114°41'0"W 114°40'0"W 114°39'0"W 114°38'0"W 114°37'0"W