

114°43'0"W 114°42'0"W 114°41'0"W 114°40'0"W 114°39'0"W 114°38'0"W





Cedar Fire ID-NCF-216

Infrared Map

Flown Sept 2, 2016 @ 2209 PDT

IR Interpreted Size: 4867 acres

S. Stitt, IRIN

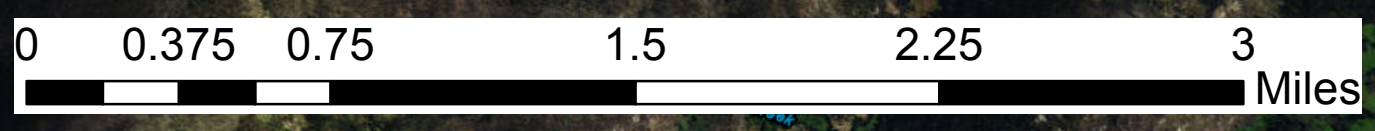
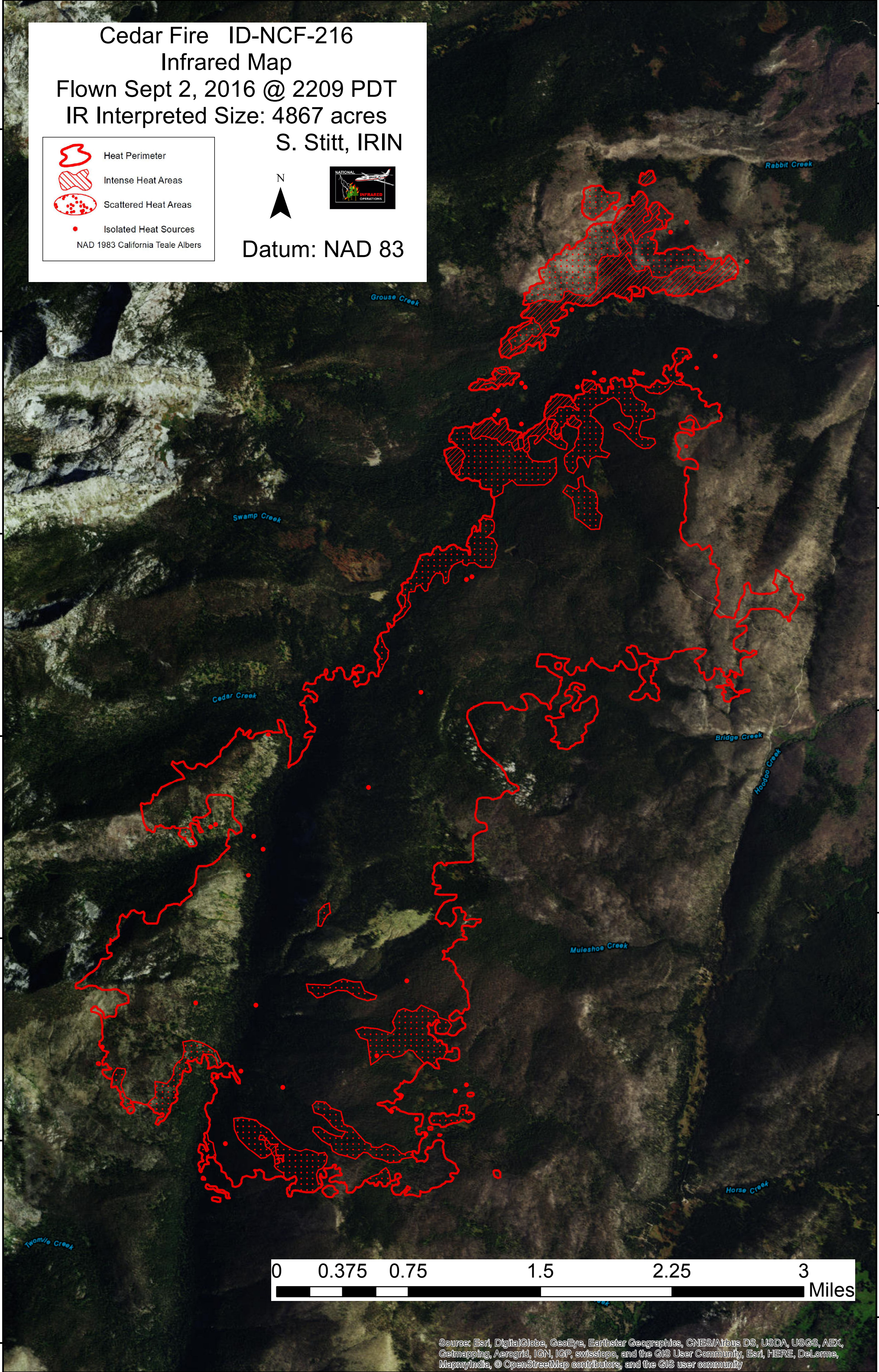
	Heat Perimeter
	Intense Heat Areas
	Scattered Heat Areas
	Isolated Heat Sources
NAD 1983 California Teale Albers	



Datum: NAD 83

46°25'0"N
46°24'0"N
46°23'0"N
46°22'0"N
46°21'0"N
46°20'0"N
46°19'0"N

46°25'0"N
46°24'0"N
46°23'0"N
46°22'0"N
46°21'0"N
46°20'0"N
46°19'0"N



Source: Esri, DigitalGlobe, GeoEye, Earthstar Geographics, CNES/Airbus DS, USDA, USGS, AEX, Getmapping, Aerogrid, IGN, IGP, swisstopo, and the GIS User Community, Esri, HERE, DeLorme, MapmyIndia, © OpenStreetMap contributors, and the GIS user community

114°43'0"W 114°42'0"W 114°41'0"W 114°40'0"W 114°39'0"W 114°38'0"W