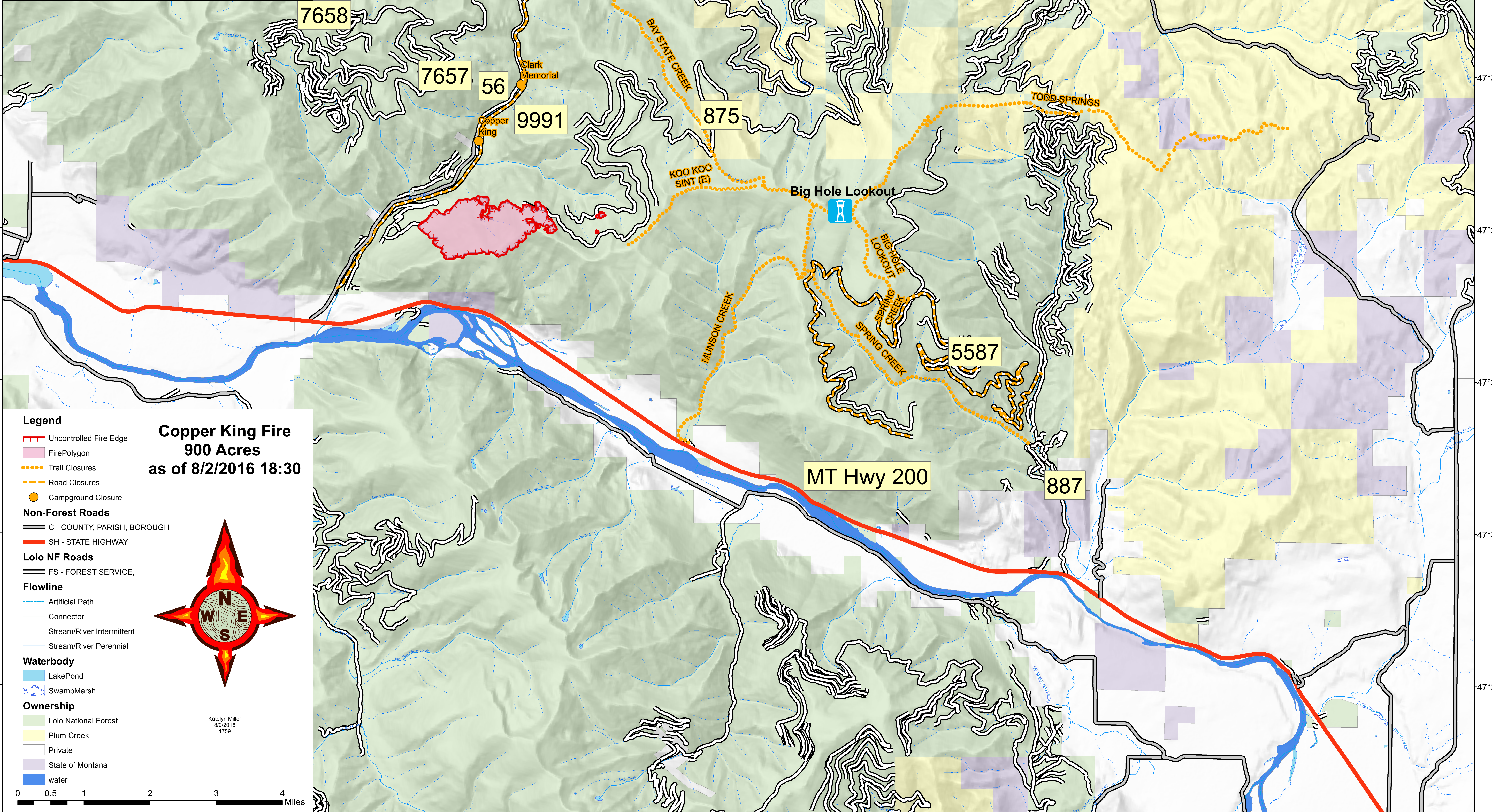


115°20'0"W 115°18'0"W 115°16'0"W 115°14'0"W 115°12'0"W 115°10'0"W 115°8'0"W 115°6'0"W 115°4'0"W 115°2'0"W 115°0'0"W 114°58'0"W 114°56'0"W 114°54'0"W 114°52'0"W

Copper King

MT - LNF - 005092

8/3/2016
Public
Information



Legend

- Uncontrolled Fire Edge
- FirePolygon
- Trail Closures
- Road Closures
- Campground Closure

Non-Forest Roads

- C - COUNTY, PARISH, BOROUGH
- SH - STATE HIGHWAY

Lolo NF Roads

- FS - FOREST SERVICE

Flowline

- Artificial Path
- Connector
- Stream/River Intermittent
- Stream/River Perennial

Waterbody

- LakePond
- SwampMarsh

Ownership

- Lolo National Forest
- Plum Creek
- Private
- State of Montana
- water

Copper King Fire
900 Acres
as of 8/2/2016 18:30

Katelyn Miller
8/2/2016
1759

0 0.5 1 2 3 4 Miles

115°20'0"W 115°18'0"W 115°16'0"W 115°14'0"W 115°12'0"W 115°10'0"W 115°8'0"W 115°6'0"W 115°4'0"W 115°2'0"W 115°0'0"W 114°58'0"W 114°56'0"W 114°54'0"W 114°52'0"W

47°42'0"N
47°40'0"N
47°38'0"N
47°36'0"N
47°34'0"N
47°32'0"N
47°30'0"N

47°42'0"N
47°40'0"N
47°38'0"N
47°36'0"N
47°34'0"N
47°32'0"N
47°30'0"N