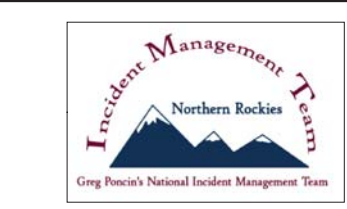


Copper King Fire Operations Map

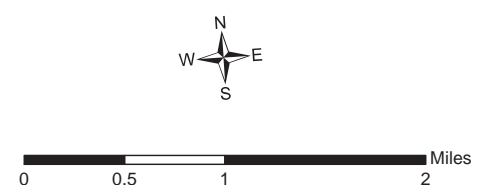
MT-LNF-005092
 September 4, 2016
 28,534 Acres

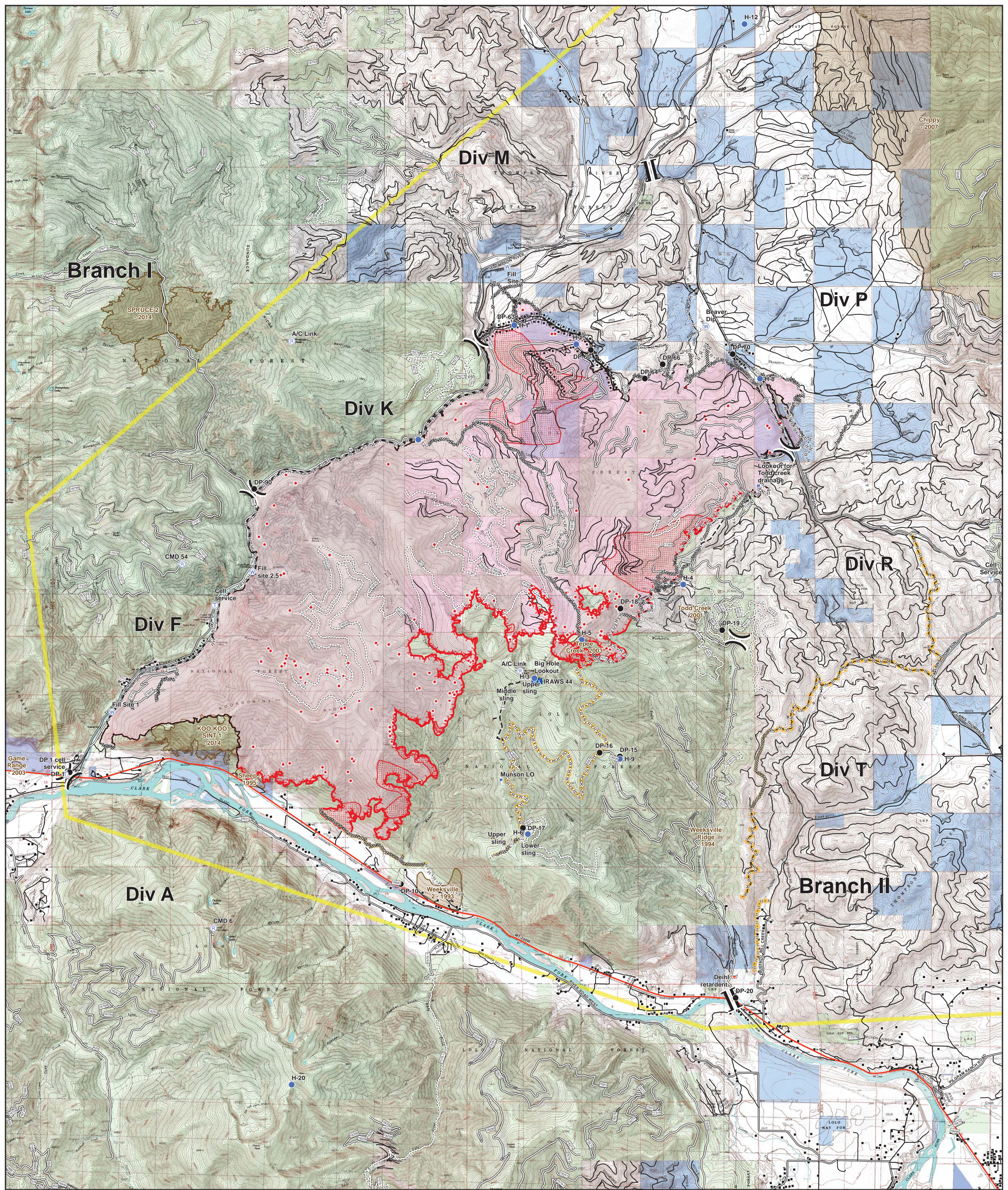


IR Data as of 9/03/2016 at 2227 hrs

- IR Isolated Heat Sources
- IR Intense Heat
- IR Scattered Heat

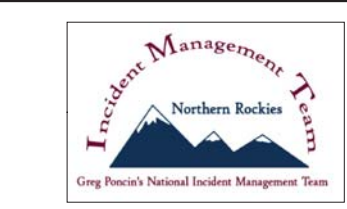
Fire Polygon	Fire History 1980 - Present	Temporary Flight Restrictions	Structures	Drop Point	Helispot	Lookout	Mobile Weather Unit	Repeater	Retardant/Mud Pit	Sling Site	Telephone	Water Source	Feller Buncher Line	Completed Dozer Line	Hand Line	Road as Completed Line	Aerial Retardant Drop	Completed Burnout	NFSR Open	NFSR Impassable to Motorized Vehicles	NFSR Restricted/Legally Gated Admin Use	NFSR Barrired/Legally No Admin Use	C - County, Parish, Borough	OF - Other Federal	OS - Other State	P - Private	SH - State Highway	UND - Undetermined	County Government	Montana Dept of Transportation	Montana Fish, Wildlife, and Parks	Montana State Trust Lands	US Forest Service
Division	Branch	Drop Point	Helispot	Lookout	Mobile Weather Unit	Repeater	Retardant/Mud Pit	Sling Site	Telephone	Water Source	NFSR Open	NFSR Impassable to Motorized Vehicles	NFSR Restricted/Legally Gated Admin Use	NFSR Barrired/Legally No Admin Use	C - County, Parish, Borough	OF - Other Federal	OS - Other State	P - Private	SH - State Highway	UND - Undetermined	County Government	Montana Dept of Transportation	Montana Fish, Wildlife, and Parks	Montana State Trust Lands	US Forest Service								





Copper King Fire Operations Map

MT-LNF-005092
 September 4, 2016
 28,534 Acres



IR Data as of 9/03/2016 at 2227 hrs

- IR Isolated Heat Sources
- IR Intense Heat
- IR Scattered Heat

Fire Polygon	Fire History 1980 - Present	Temporary Flight Restrictions	Structures	Drop Point	Helispot	Lookout	Mobile Weather Unit	Repeater	Retardant/Mud Pit	Sling Site	Telephone	Water Source	Feller Buncher Line	Completed Dozer Line	Hand Line	Road as Completed Line	Aerial Retardant Drop	Completed Burnout	NFSR Open	NFSR Impassable to Motorized Vehicles	NFSR Restricted/Legally Gated Admin Use	NFSR Barrired/Legally No Admin Use	C - County, Parish, Borough	OF - Other Federal	OS - Other State	P - Private	SH - State Highway	UND - Undetermined	County Government	Montana Dept of Transportation	Montana Fish, Wildlife, and Parks	Montana State Trust Lands	US Forest Service
--------------	-----------------------------	-------------------------------	------------	------------	----------	---------	---------------------	----------	-------------------	------------	-----------	--------------	---------------------	----------------------	-----------	------------------------	-----------------------	-------------------	-----------	---------------------------------------	---	------------------------------------	-----------------------------	--------------------	------------------	-------------	--------------------	--------------------	-------------------	--------------------------------	-----------------------------------	---------------------------	-------------------

