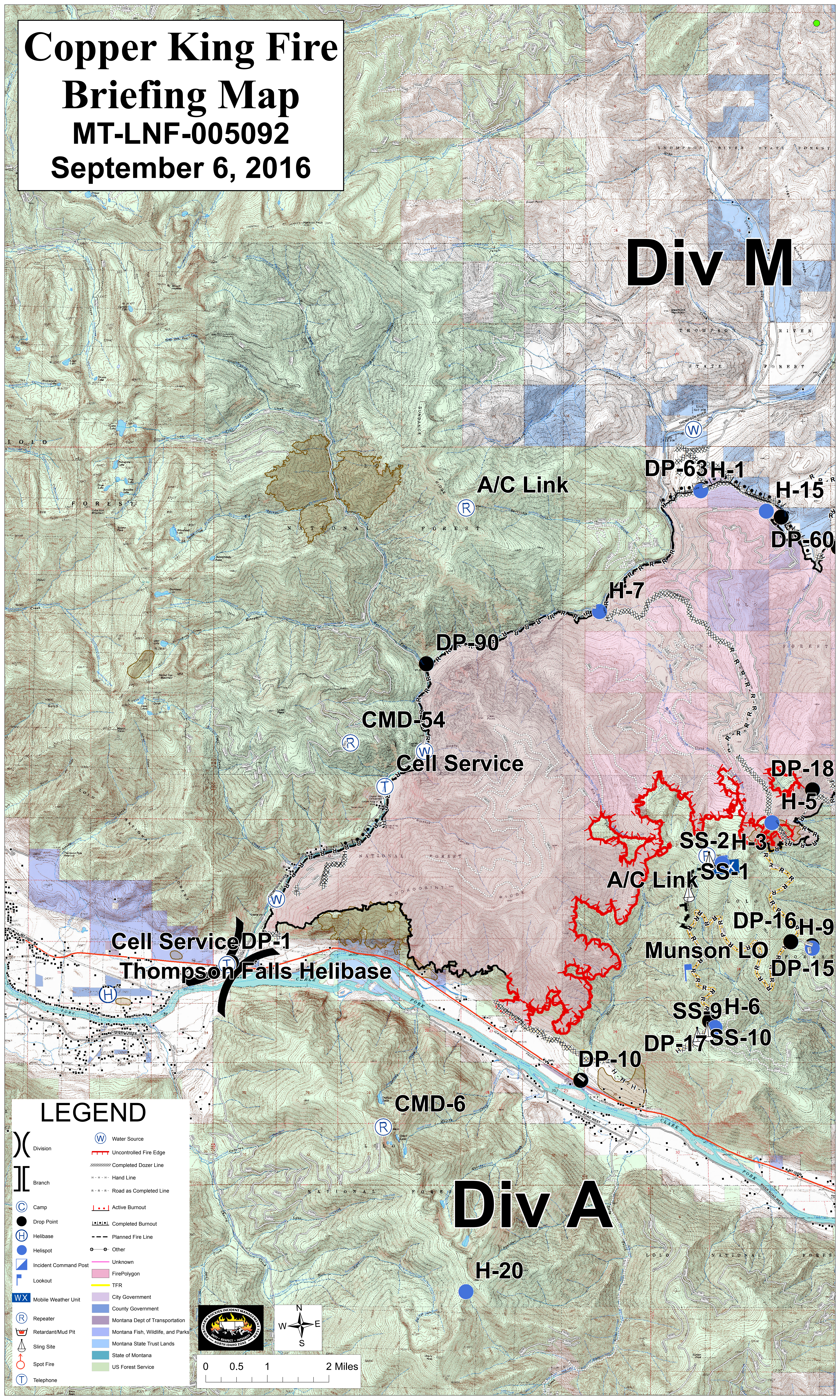


Copper King Fire Briefing Map

MT-LNF-005092

September 6, 2016

Div M



Cell Service DP-1
Thompson Falls Helibase

A/C Link

DP-63 H-1

H-15

DP-60

H-7

DP-90

CMD-54

Cell Service

DP-18

H-5

SS-2 H-3

A/C Link SS-1

DP-16 H-9

Munson LO

DP-15

SS-9 H-6

DP-17 SS-10

DP-10

CMD-6

Div A

H-20

LEGEND

- () Division
- [] Branch
- (C) Camp
- (●) Drop Point
- (H) Helibase
- (●) Helispot
- (I) Incident Command Post
- (L) Lookout
- (WX) Mobile Weather Unit
- (R) Repeater
- (M) Retardant/Mud Pit
- (S) Sling Site
- (●) Spot Fire
- (T) Telephone
- (W) Water Source
- Uncontrolled Fire Edge
- Completed Dozer Line
- - - Hand Line
- - - Road as Completed Line
- - - Active Burnout
- - - Completed Burnout
- - - Planned Fire Line
- Other
- Unknown
- Fire Polygon
- TFR
- City Government
- County Government
- Montana Dept of Transportation
- Montana Fish, Wildlife, and Parks
- Montana State Trust Lands
- State of Montana
- US Forest Service

