

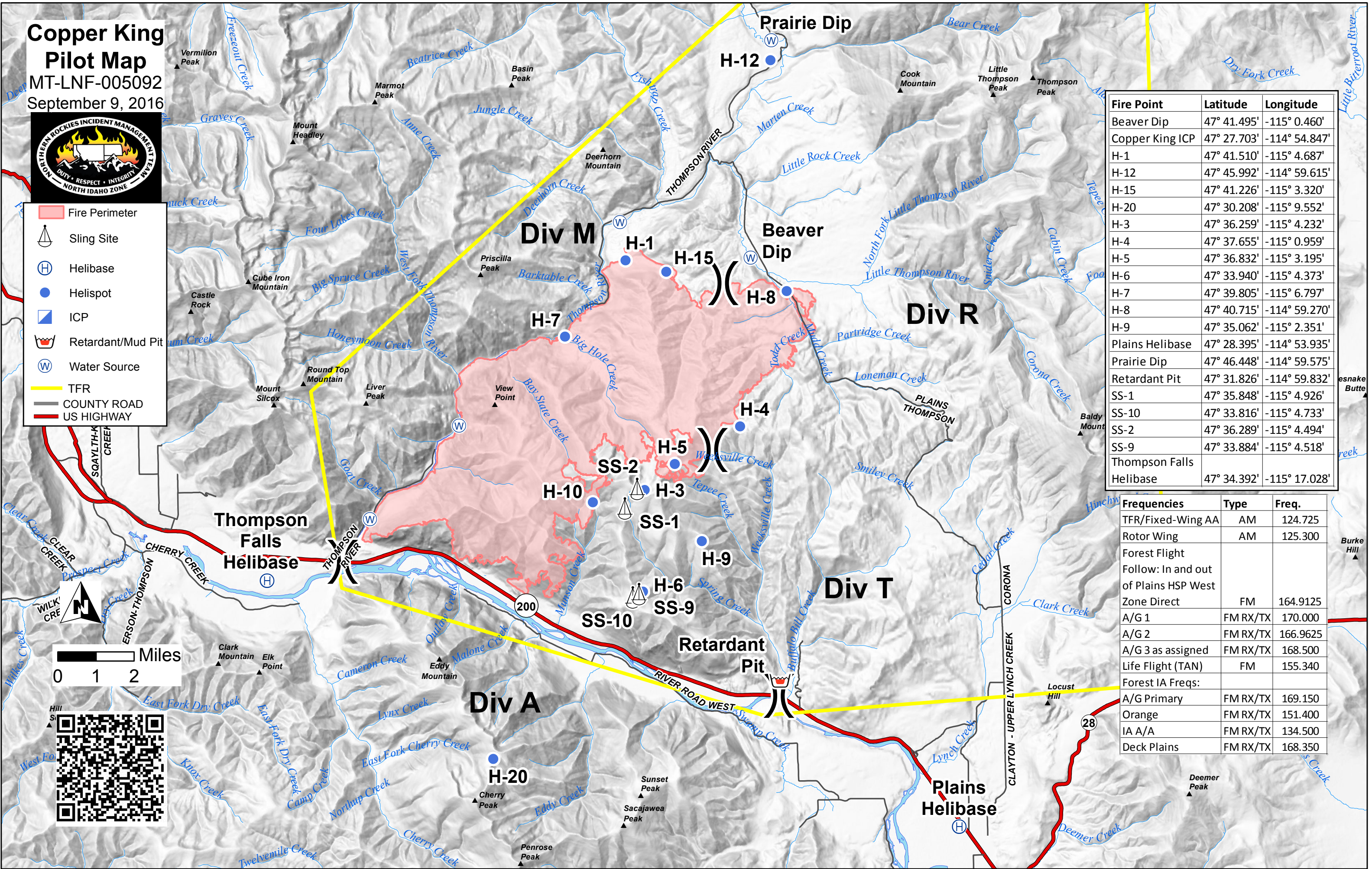
**Copper King Pilot Map**  
 MT-LNF-005092  
 September 9, 2016



- Fire Perimeter
- Sling Site
- Helibase
- Helispot
- ICP
- Retardant/Mud Pit
- Water Source
- TFR
- COUNTY ROAD
- US HIGHWAY

Fire Point	Latitude	Longitude
Beaver Dip	47° 41.495'	-115° 0.460'
Copper King ICP	47° 27.703'	-114° 54.847'
H-1	47° 41.510'	-115° 4.687'
H-12	47° 45.992'	-114° 59.615'
H-15	47° 41.226'	-115° 3.320'
H-20	47° 30.208'	-115° 9.552'
H-3	47° 36.259'	-115° 4.232'
H-4	47° 37.655'	-115° 0.959'
H-5	47° 36.832'	-115° 3.195'
H-6	47° 33.940'	-115° 4.373'
H-7	47° 39.805'	-115° 6.797'
H-8	47° 40.715'	-114° 59.270'
H-9	47° 35.062'	-115° 2.351'
Plains Helibase	47° 28.395'	-114° 53.935'
Prairie Dip	47° 46.448'	-114° 59.575'
Retardant Pit	47° 31.826'	-114° 59.832'
SS-1	47° 35.848'	-115° 4.926'
SS-10	47° 33.816'	-115° 4.733'
SS-2	47° 36.289'	-115° 4.494'
SS-9	47° 33.884'	-115° 4.518'
Thompson Falls Helibase	47° 34.392'	-115° 17.028'

Frequencies	Type	Freq.
TFR/Fixed-Wing AA	AM	124.725
Rotor Wing	AM	125.300
Forest Flight		
Follow: In and out of Plains HSP West		
Zone Direct	FM	164.9125
A/G 1	FM RX/TX	170.000
A/G 2	FM RX/TX	166.9625
A/G 3 as assigned	FM RX/TX	168.500
Life Flight (TAN)	FM	155.340
Forest IA Freqs:		
A/G Primary	FM RX/TX	169.150
Orange	FM RX/TX	151.400
IA A/A	FM RX/TX	134.500
Deck Plains	FM RX/TX	168.350



0 1 2 Miles

