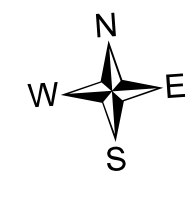


Copper King Fire Repair Map

MT-LNF-005092
September 11, 2016
28,553 Acres



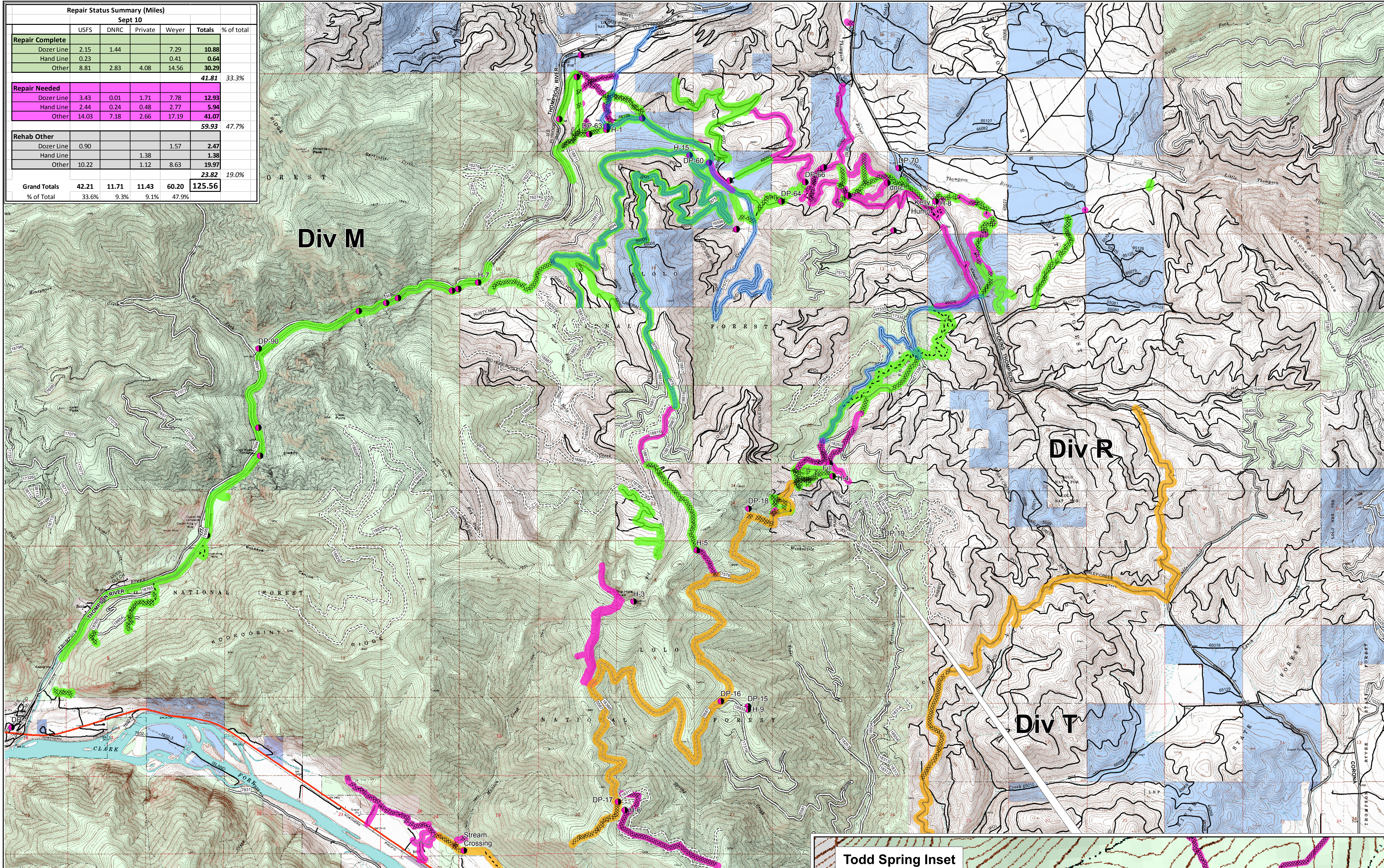
0 0.5 1 2 Miles



Legend

- Roads Sawm Out
- Repair Status**
- Repair Needed
- Repair Type**
- Dozer Line
- Hand Line
- Other
- Contingency Line
- RehabStatus**
- Rehab Complete
- Rehab Needed

Repair Status Summary (Miles)						
Sept 10						
	USFS	DNRC	Private	Weyer	Totals	% of total
Repair Complete						
Dozer Line	2.15	1.44		7.29	10.88	
Hand Line	0.23			0.41	0.64	
Other	8.81	2.83	4.08	14.56	30.29	
					41.81	33.3%
Repair Needed						
Dozer Line	3.43	0.01	1.71	7.78	12.93	
Hand Line	2.44	0.24	0.48	2.77	5.94	
Other	14.03	7.18	2.66	17.19	41.07	
					59.93	47.7%
Rehab Other						
Dozer Line	0.90			1.57	2.47	
Hand Line			1.38		1.38	
Other	10.22		1.12	8.63	19.97	
					23.82	19.0%
Grand Totals	42.21	11.71	11.43	60.20	125.56	
% of Total	33.6%	9.3%	9.1%	47.9%		



*Note: Data below from Sept 11, 2016, 1400 hours.

Figures below do not include 27 miles of contingency line. Duplicate needs reflected on previous maps have also been removed.

Repair Status Summary (Miles)						
Sept 11						
	USFS	DNRC	Private	Weyer	Totals	% of total
Repair Complete						
Dozer Line	2.62	1.44	0.21	9.26	13.54	
Hand Line	1.74	0.17		2.48	4.39	
Other	14.50	7.02	4.23	20.00	45.75	
					63.68	68.0%
Repair Needed						
Dozer Line	4.47	0.01	1.16	4.14	9.78	
Hand Line	0.33	0.07		0.61	1.01	
Other	4.63	3.44	2.41	8.68	19.16	
					29.96	32.0%
Grand Totals	28.29	12.16	8.01	45.16	93.63	
% of Total	30.2%	13.0%	8.6%	48.2%		

