

Copper King Fire Repair Map

MT-LNF-005092
September 12, 2016
28,553 Acres



0 0.5 1 2 Miles



Legend

Repair Status

- Repair Needed

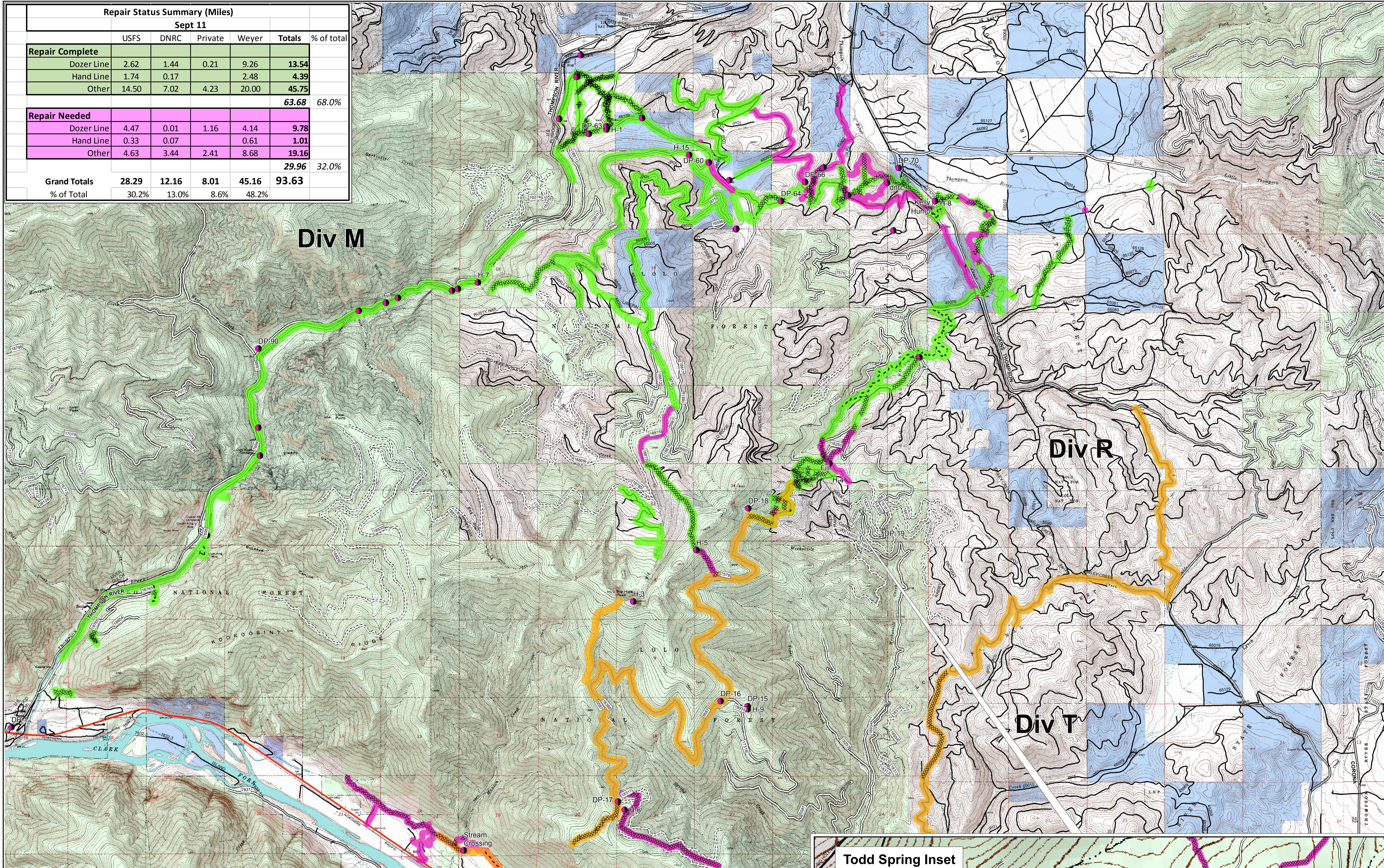
Repair Type

- ▬▬▬▬ Dozer Line
- Hand Line
- Other
- Contingency Line

Repair Status

- Other
- Repair Complete
- Repair Needed

Repair Status Summary (Miles)						
Sept 11						
	USFS	DNRC	Private	Weyer	Totals	% of total
Repair Complete						
Dozer Line	2.62	1.44	0.21	9.26	13.54	
Hand Line	1.74	0.17		2.48	4.39	
Other	14.50	7.02	4.23	20.00	45.75	
					63.68	68.0%
Repair Needed						
Dozer Line	4.47	0.01	1.16	4.14	9.78	
Hand Line	0.33	0.07		0.61	1.01	
Other	4.63	3.44	2.41	8.68	19.16	
					29.96	32.0%
Grand Totals	28.29	12.16	8.01	45.16	93.63	
% of Total	30.2%	13.0%	8.6%	48.2%		



*Note: Data below from Sept 12, 2016, 0900 hours.

Figures below do not include 27 miles of contingency line. Duplicate needs reflected on previous maps have also been removed.

Repair Status Summary (Miles)						
Sept 12						
	USFS	DNRC	Private	Weyer	Totals	% of total
Repair Complete						
Dozer Line	2.60	1.44	0.21	11.62	15.88	
Hand Line	1.74	0.23		2.91	4.87	
Other	15.11	5.94	4.23	19.43	44.71	
					65.46	72.3%
Repair Needed						
Dozer Line	4.17		1.50	3.76	9.43	
Hand Line	0.58	0.01	0.48	0.19	1.26	
Other	1.54	2.89	2.41	7.53	14.38	
					25.07	27.7%
Grand Totals	25.74	10.52	8.83	45.45	90.53	
% of Total	28.4%	11.6%	9.8%	50.2%		

