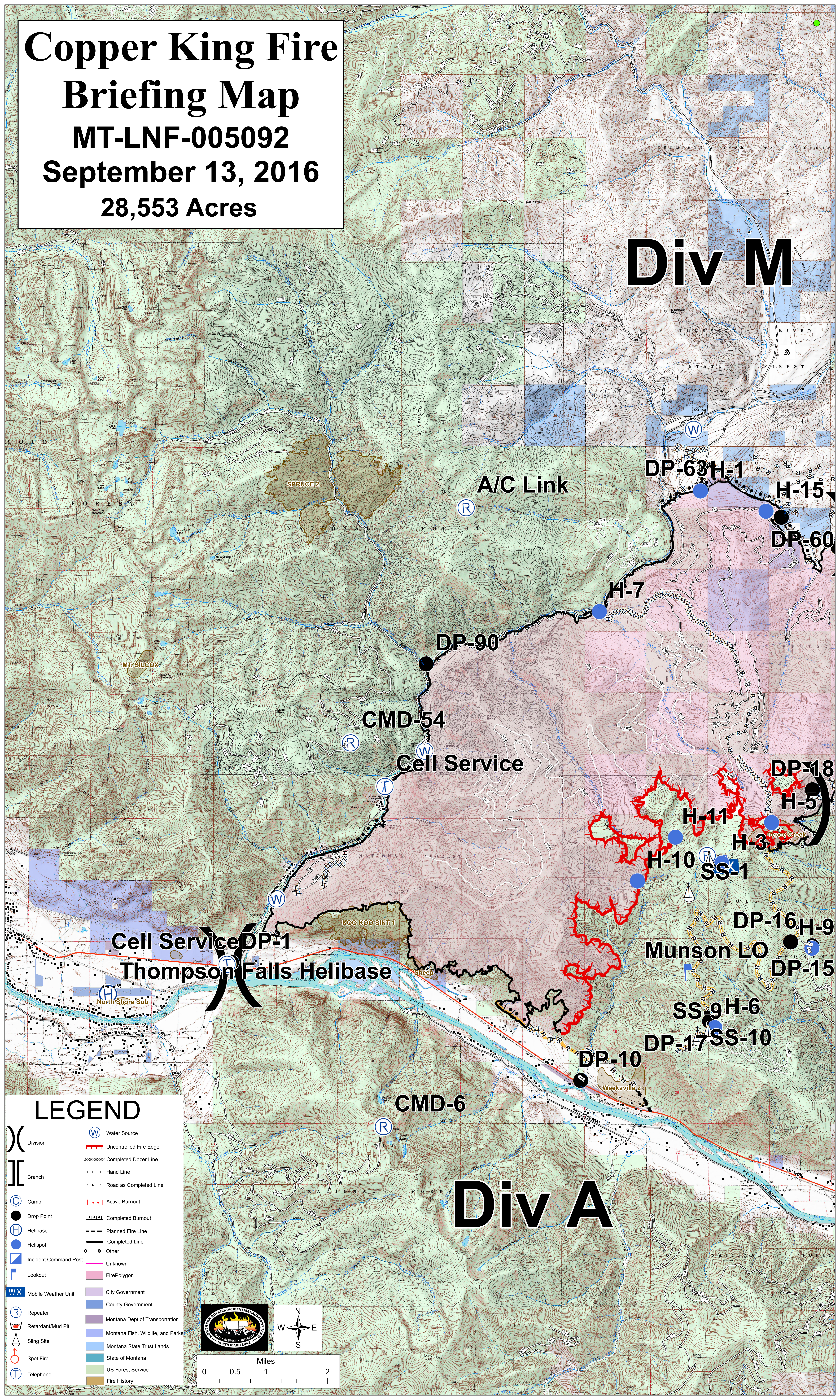


# Copper King Fire Briefing Map

MT-LNF-005092  
September 13, 2016  
28,553 Acres

# Div M

# Div A



## LEGEND

- |      |                       |           |                                   |
|------|-----------------------|-----------|-----------------------------------|
| ( )  | Division              | (W)       | Water Source                      |
| ( )  | Branch                | (---)     | Uncontrolled Fire Edge            |
| (C)  | Camp                  | (-----)   | Completed Dozer Line              |
| (●)  | Drop Point            | (- - - -) | Hand Line                         |
| (H)  | Helibase              | (R-R-R-R) | Road as Completed Line            |
| (●)  | Helispot              | (- · - ·) | Active Burnout                    |
| (I)  | Incident Command Post | (- · - ·) | Completed Burnout                 |
| (WX) | Mobile Weather Unit   | (---)     | Planned Fire Line                 |
| (R)  | Repeater              | (---)     | Completed Line                    |
| (M)  | Retardant/Mud Pit     | (---)     | Other                             |
| (S)  | Sling Site            | (---)     | Unknown                           |
| (●)  | Spot Fire             | (---)     | Fire Polygon                      |
| (T)  | Telephone             | (---)     | City Government                   |
|      |                       | (---)     | County Government                 |
|      |                       | (---)     | Montana Dept of Transportation    |
|      |                       | (---)     | Montana Fish, Wildlife, and Parks |
|      |                       | (---)     | Montana State Trust Lands         |
|      |                       | (---)     | State of Montana                  |
|      |                       | (---)     | US Forest Service                 |
|      |                       | (---)     | Fire History                      |

