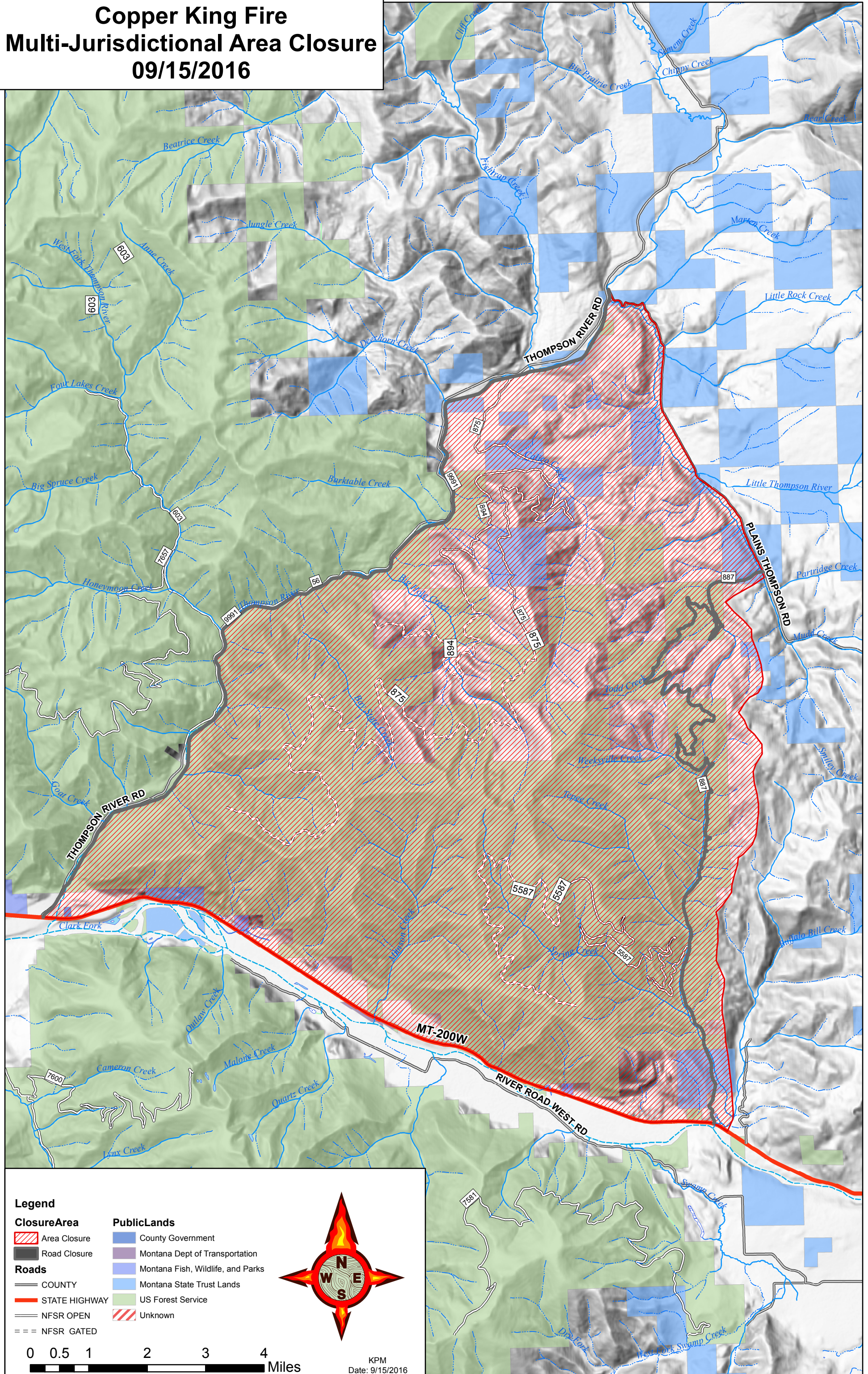


Copper King Fire Multi-Jurisdictional Area Closure 09/15/2016



Legend

ClosureArea

Area Closure

Road Closure

Roads

COUNTY

STATE HIGHWAY

NFSR OPEN

NFSR GATED

PublicLands

County Government

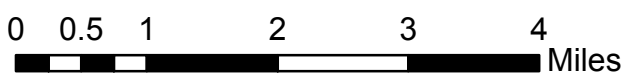
Montana Dept of Transportation

Montana Fish, Wildlife, and Parks

Montana State Trust Lands

US Forest Service

Unknown



KPM
Date: 9/15/2016