

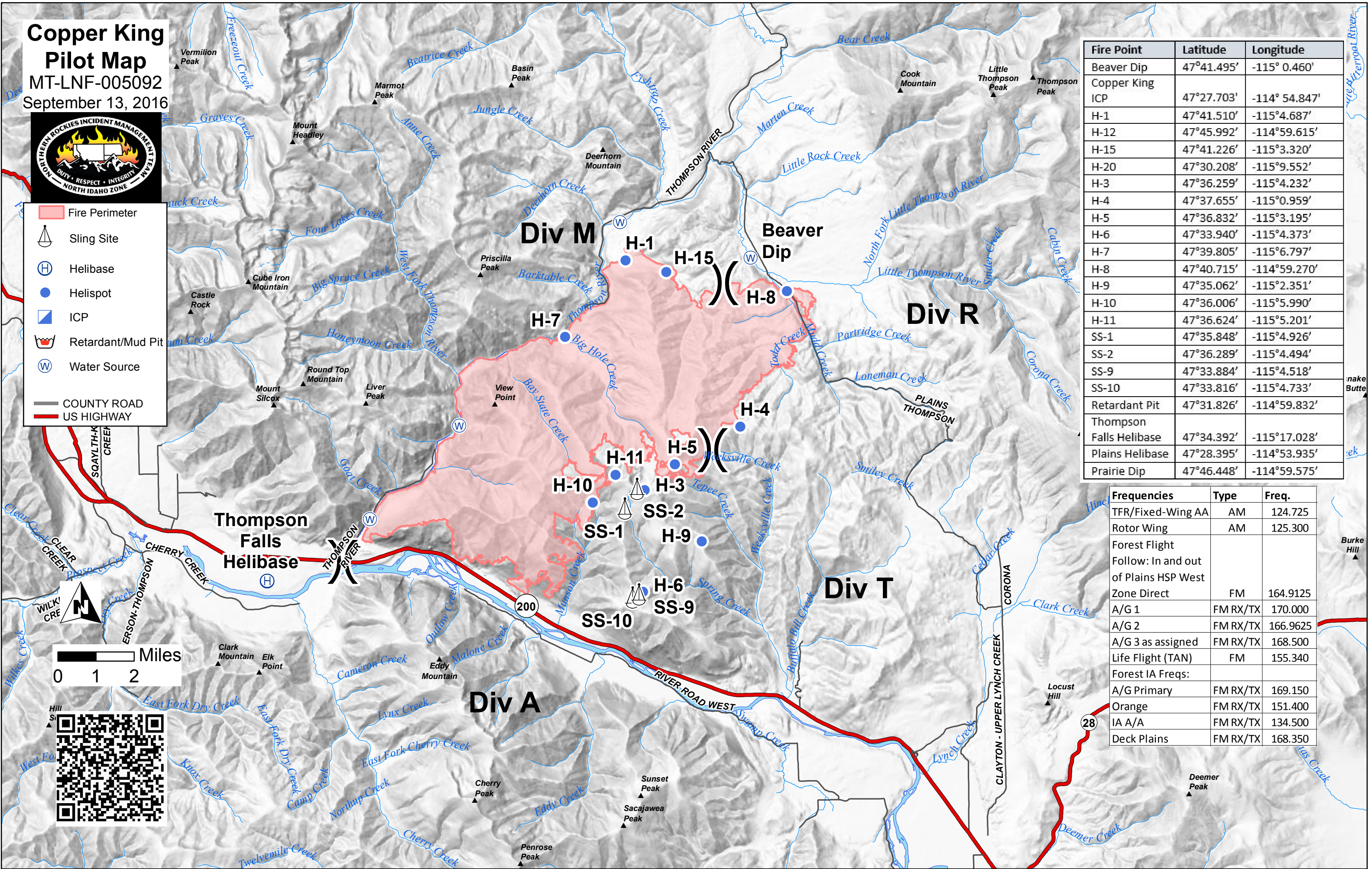
**Copper King
Pilot Map**
MT-LNF-005092
September 13, 2016



- Fire Perimeter
- Sling Site
- Helibase
- Helispot
- ICP
- Retardant/Mud Pit
- Water Source
- COUNTY ROAD
- US HIGHWAY

Fire Point	Latitude	Longitude
Beaver Dip	47°41.495'	-115° 0.460'
Copper King ICP	47°27.703'	-114° 54.847'
H-1	47°41.510'	-115°4.687'
H-12	47°45.992'	-114°59.615'
H-15	47°41.226'	-115°3.320'
H-20	47°30.208'	-115°9.552'
H-3	47°36.259'	-115°4.232'
H-4	47°37.655'	-115°0.959'
H-5	47°36.832'	-115°3.195'
H-6	47°33.940'	-115°4.373'
H-7	47°39.805'	-115°6.797'
H-8	47°40.715'	-114°59.270'
H-9	47°35.062'	-115°2.351'
H-10	47°36.006'	-115°5.990'
H-11	47°36.624'	-115°5.201'
SS-1	47°35.848'	-115°4.926'
SS-2	47°36.289'	-115°4.494'
SS-9	47°33.884'	-115°4.518'
SS-10	47°33.816'	-115°4.733'
Retardant Pit	47°31.826'	-114°59.832'
Thompson Falls Helibase	47°34.392'	-115°17.028'
Plains Helibase	47°28.395'	-114°53.935'
Prairie Dip	47°46.448'	-114°59.575'

Frequencies	Type	Freq.
TFR/Fixed-Wing AA	AM	124.725
Rotor Wing	AM	125.300
Forest Flight		
Follow: In and out of Plains HSP West		
Zone Direct	FM	164.9125
A/G 1	FM RX/TX	170.000
A/G 2	FM RX/TX	166.9625
A/G 3 as assigned	FM RX/TX	168.500
Life Flight (TAN)	FM	155.340
Forest IA Freqs:		
A/G Primary	FM RX/TX	169.150
Orange	FM RX/TX	151.400
IA A/A	FM RX/TX	134.500
Deck Plains	FM RX/TX	168.350



0 1 2 Miles

