



115°13'0"W 115°12'30"W 115°12'0"W 115°11'30"W 115°11'0"W 115°10'30"W 115°10'0"W 115°9'30"W 115°9'0"W 115°8'30"W

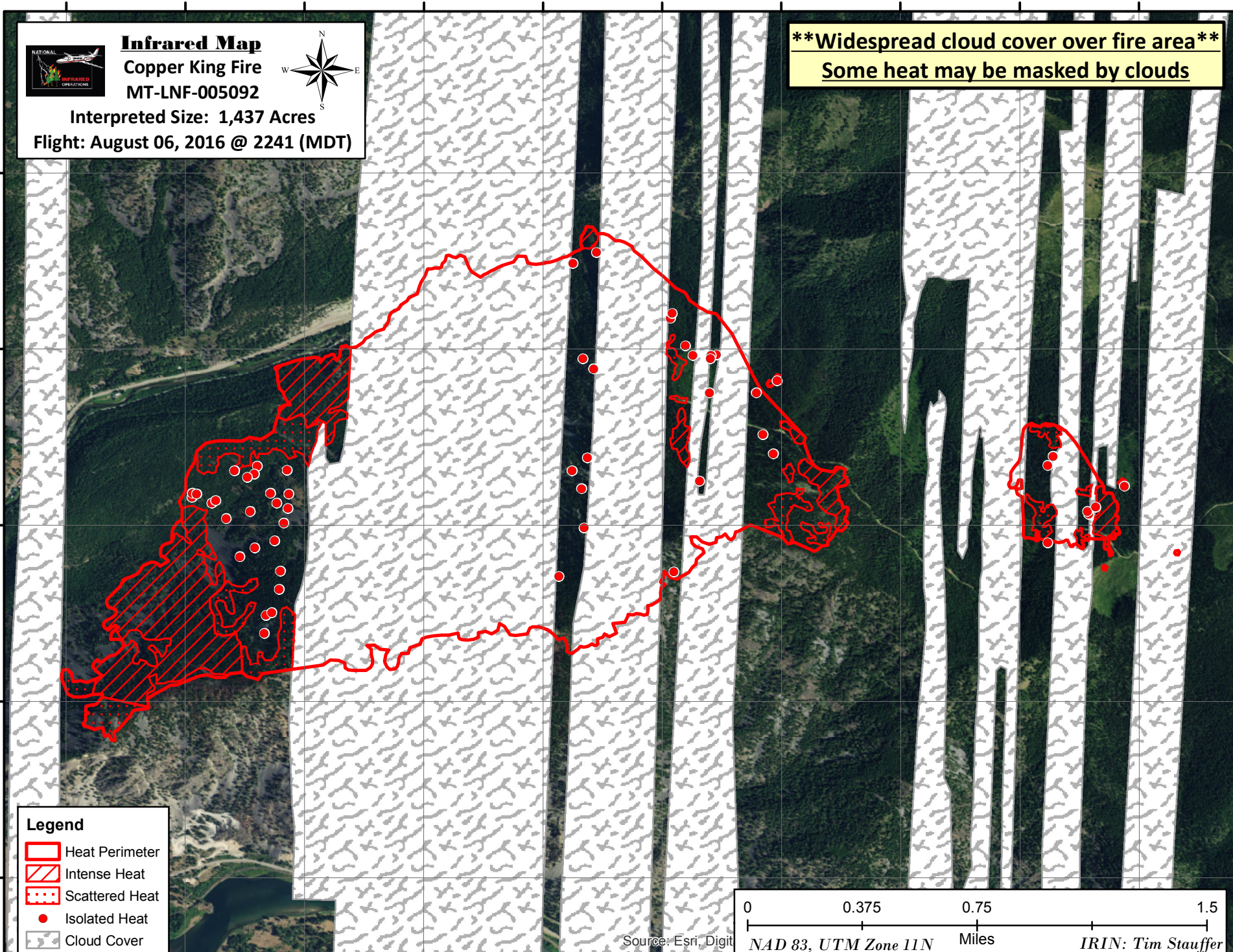


Infrared Map
Copper King Fire
MT-LNF-005092
 Interpreted Size: 1,437 Acres
 Flight: August 06, 2016 @ 2241 (MDT)








****Widespread cloud cover over fire area****
Some heat may be masked by clouds

47°37'0"N
47°36'30"N
47°36'0"N
47°35'30"N
47°35'0"N



Legend

-  Heat Perimeter
-  Intense Heat
-  Scattered Heat
-  Isolated Heat
-  Cloud Cover

0 0.375 0.75 1.5
 Miles
 Source: Esri, DigitalGlobe, GeoEye, IGN, Aerogram, AeroGRID, IGN, Swayze, and the GIS User Community
 NAD 83, UTM Zone 11N
 IRIN: Tim Stauffer