

115°13'0"W 115°12'30"W 115°12'0"W 115°11'30"W 115°11'0"W 115°10'30"W 115°10'0"W 115°9'30"W 115°9'0"W 115°8'30"W



Copper King Incident MT-LNF-005092 Infrared Map

Imagery Date: 8/13/2016 @ 2335 hrs
Interpreted Acres: 1,517
IRIN: Robert Aiken



47°37'0"N

47°36'30"N

47°36'0"N

47°35'30"N

47°35'0"N

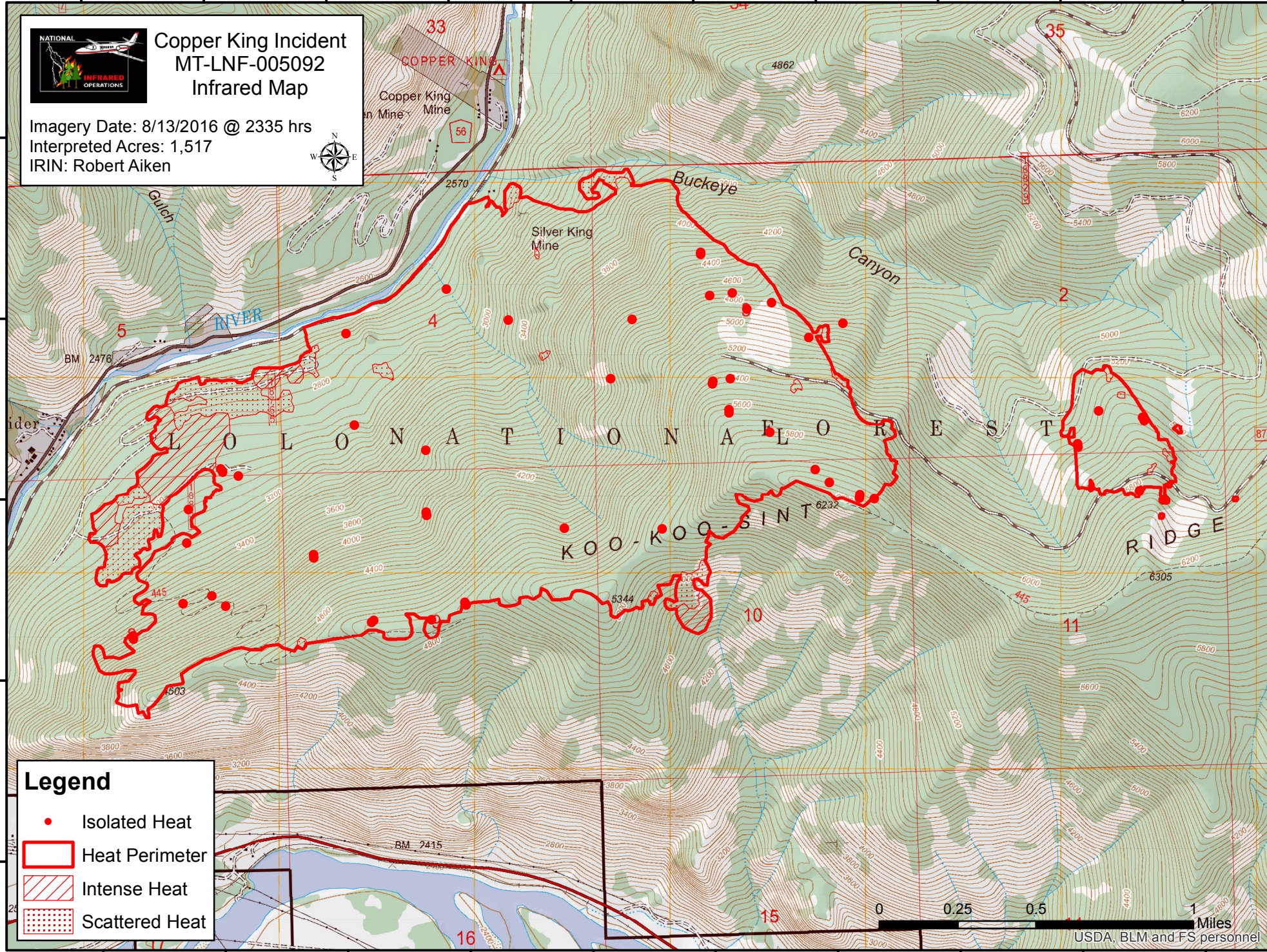
47°37'0"N

47°36'30"N

47°36'0"N

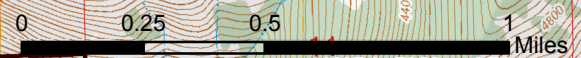
47°35'30"N

47°35'0"N



Legend

- Isolated Heat
- Heat Perimeter
- Intense Heat
- Scattered Heat



USDA, BLM, and FS personnel

115°13'0"W 115°12'30"W 115°12'0"W 115°11'30"W 115°11'0"W 115°10'30"W 115°10'0"W 115°9'30"W 115°9'0"W 115°8'30"W