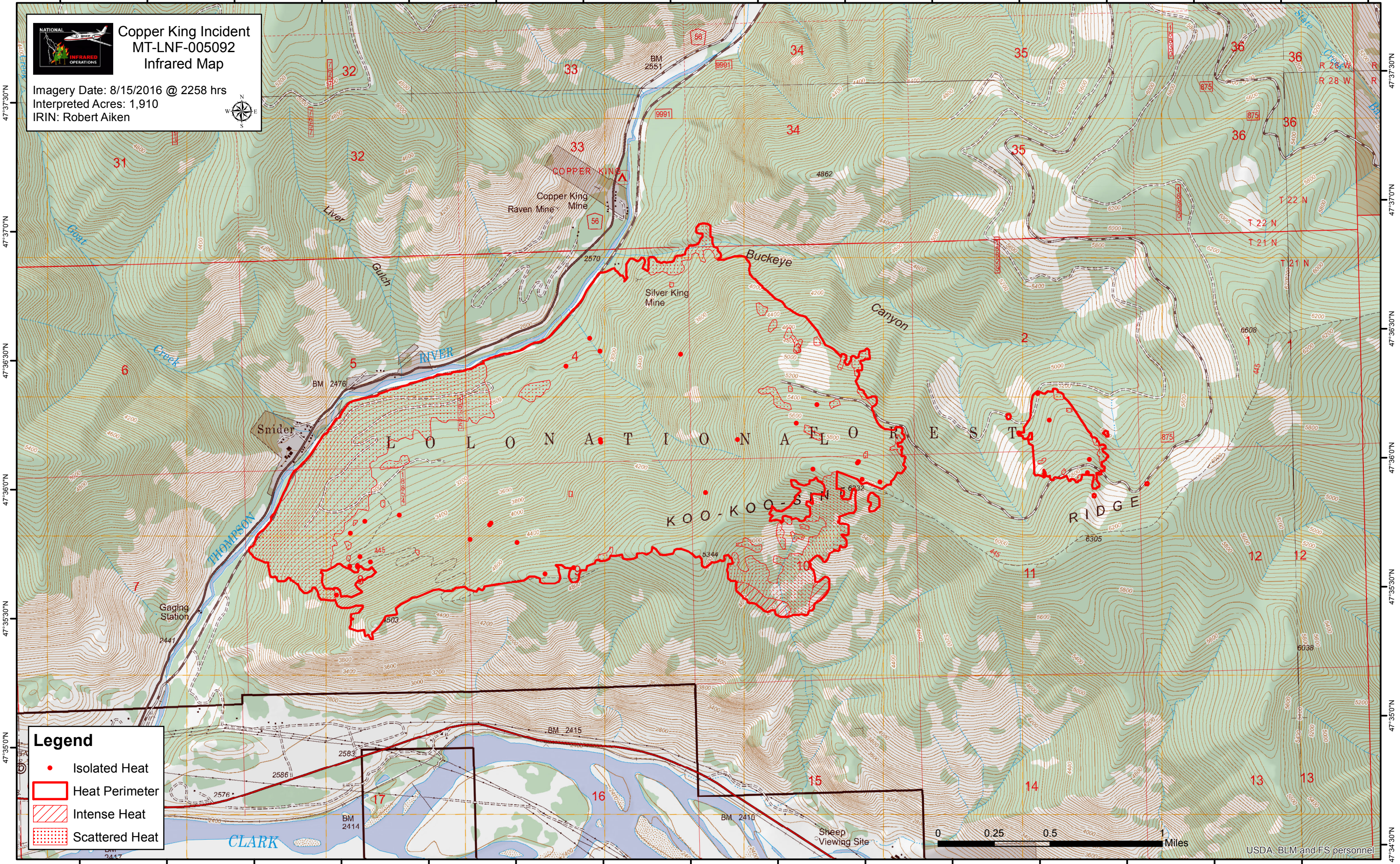


115°14'30"W 115°14'0"W 115°13'30"W 115°13'0"W 115°12'30"W 115°12'0"W 115°11'30"W 115°11'0"W 115°10'30"W 115°10'0"W 115°9'30"W 115°9'0"W 115°8'30"W 115°8'0"W 115°7'30"W 115°7'0"W



# Copper King Incident MT-LNF-005092 Infrared Map

Imagery Date: 8/15/2016 @ 2258 hrs  
Interpreted Acres: 1,910  
IRIN: Robert Aiken



- Legend**
- Isolated Heat
  - Heat Perimeter
  - Intense Heat
  - Scattered Heat



USDA, BLM and FS personnel

47°37'30"N  
47°37'0"N  
47°36'30"N  
47°36'0"N  
47°35'30"N  
47°35'0"N  
47°34'30"N

47°37'30"N  
47°37'0"N  
47°36'30"N  
47°36'0"N  
47°35'30"N  
47°35'0"N  
47°34'30"N

115°14'30"W 115°14'0"W 115°13'30"W 115°13'0"W 115°12'30"W 115°12'0"W 115°11'30"W 115°11'0"W 115°10'30"W 115°10'0"W 115°9'30"W 115°9'0"W 115°8'30"W 115°8'0"W 115°7'30"W 115°7'0"W