
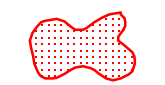



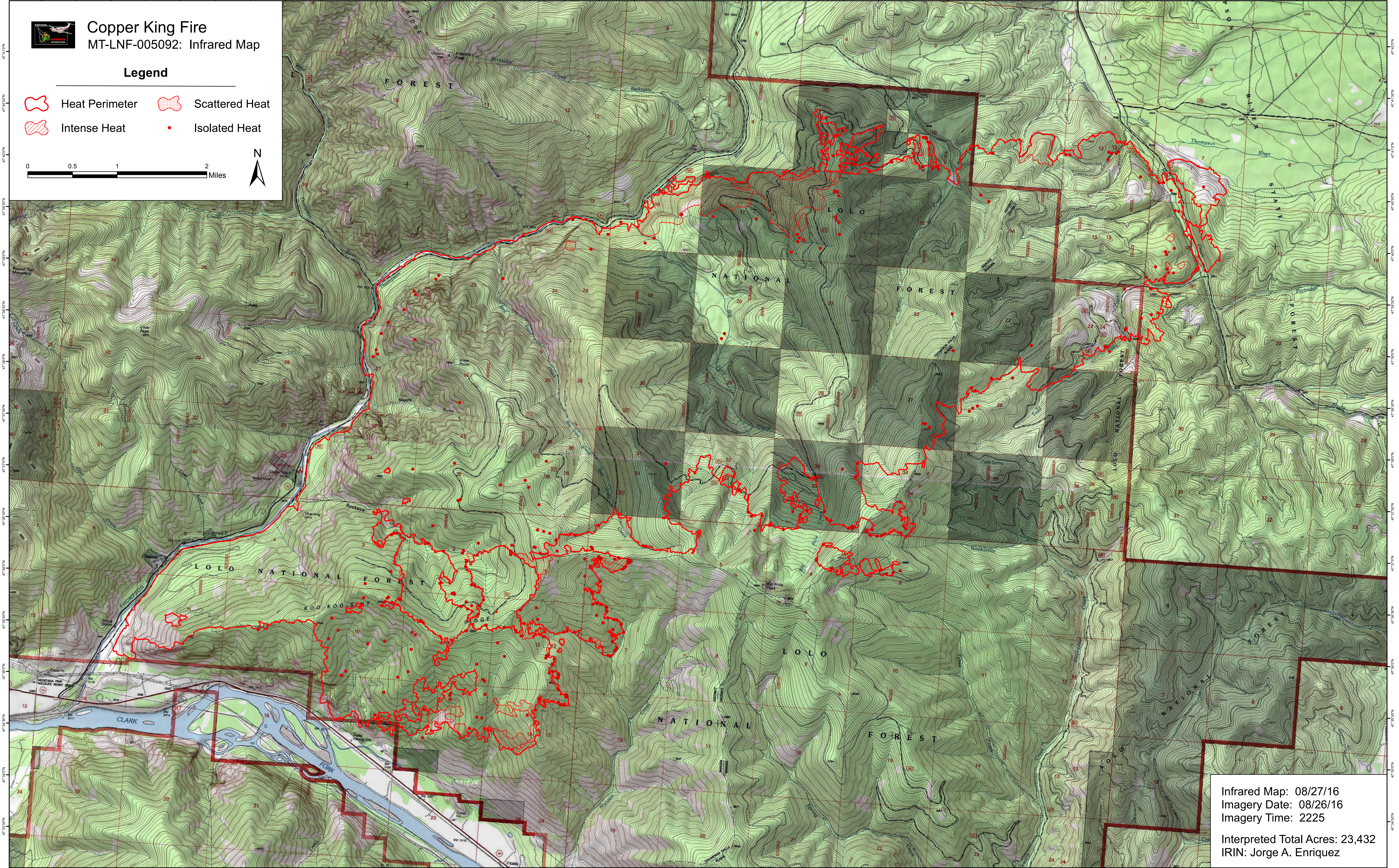
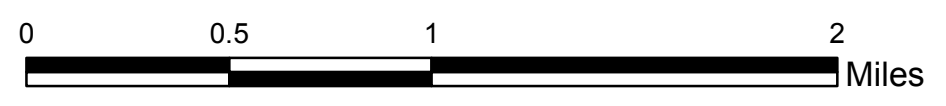
115°15'00"W 115°14'30"W 115°14'00"W 115°13'30"W 115°13'00"W 115°12'30"W 115°12'00"W 115°11'30"W 115°11'00"W 115°10'30"W 115°10'00"W 115°9'30"W 115°9'00"W 115°8'30"W 115°8'00"W 115°7'30"W 115°7'00"W 115°6'30"W 115°6'00"W 115°5'30"W 115°5'00"W 115°4'30"W 115°4'00"W 115°3'30"W 115°3'00"W 115°2'30"W 115°2'00"W 115°1'30"W 115°1'00"W 114°59'30"W 114°59'00"W 114°58'30"W 114°58'00"W 114°57'30"W 114°57'00"W 114°56'30"W 114°56'00"W



# Copper King Fire MT-LNF-005092: Infrared Map

## Legend

-  Heat Perimeter
-  Scattered Heat
-  Intense Heat
-  Isolated Heat



Infrared Map: 08/27/16  
 Imagery Date: 08/26/16  
 Imagery Time: 2225  
 Interpreted Total Acres: 23,432  
 IRIN: Jorge A. Enriquez

115°15'00"W 115°14'30"W 115°14'00"W 115°13'30"W 115°13'00"W 115°12'30"W 115°12'00"W 115°11'30"W 115°11'00"W 115°10'30"W 115°10'00"W 115°9'30"W 115°9'00"W 115°8'30"W 115°8'00"W 115°7'30"W 115°7'00"W 115°6'30"W 115°6'00"W 115°5'30"W 115°5'00"W 115°4'30"W 115°4'00"W 115°3'30"W 115°3'00"W 115°2'30"W 115°2'00"W 115°1'30"W 115°1'00"W 114°59'30"W 114°59'00"W 114°58'30"W 114°58'00"W 114°57'30"W 114°57'00"W 114°56'30"W 114°56'00"W