

114°46'50"W

114°46'40"W

114°46'30"W

114°46'20"W

114°46'10"W

114°46'0"W

114°45'50"W

46°11'50"N

46°11'40"N

46°11'30"N

46°11'20"N

46°11'10"N

46°11'0"N

46°10'50"N

46°10'40"N

46°11'50"N

46°11'40"N

46°11'30"N

46°11'20"N

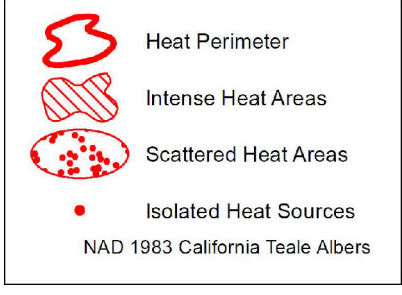
46°11'10"N

46°11'0"N

46°10'50"N

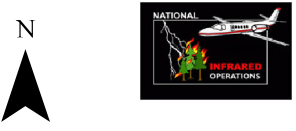
46°10'40"N

Freeman Fire ID-NCF-334
Infrared Map
 Flown August 27, 2016 @ 2228 PDT
 IR Interpreted Size: 103 acres
 S. Stitt, IRIN

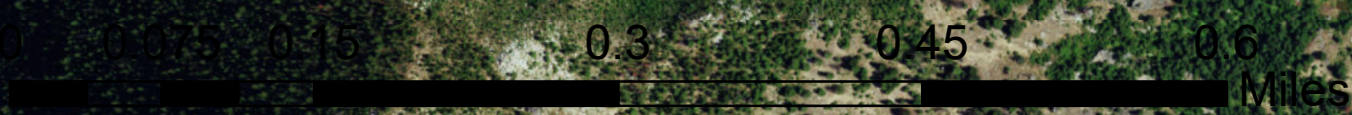
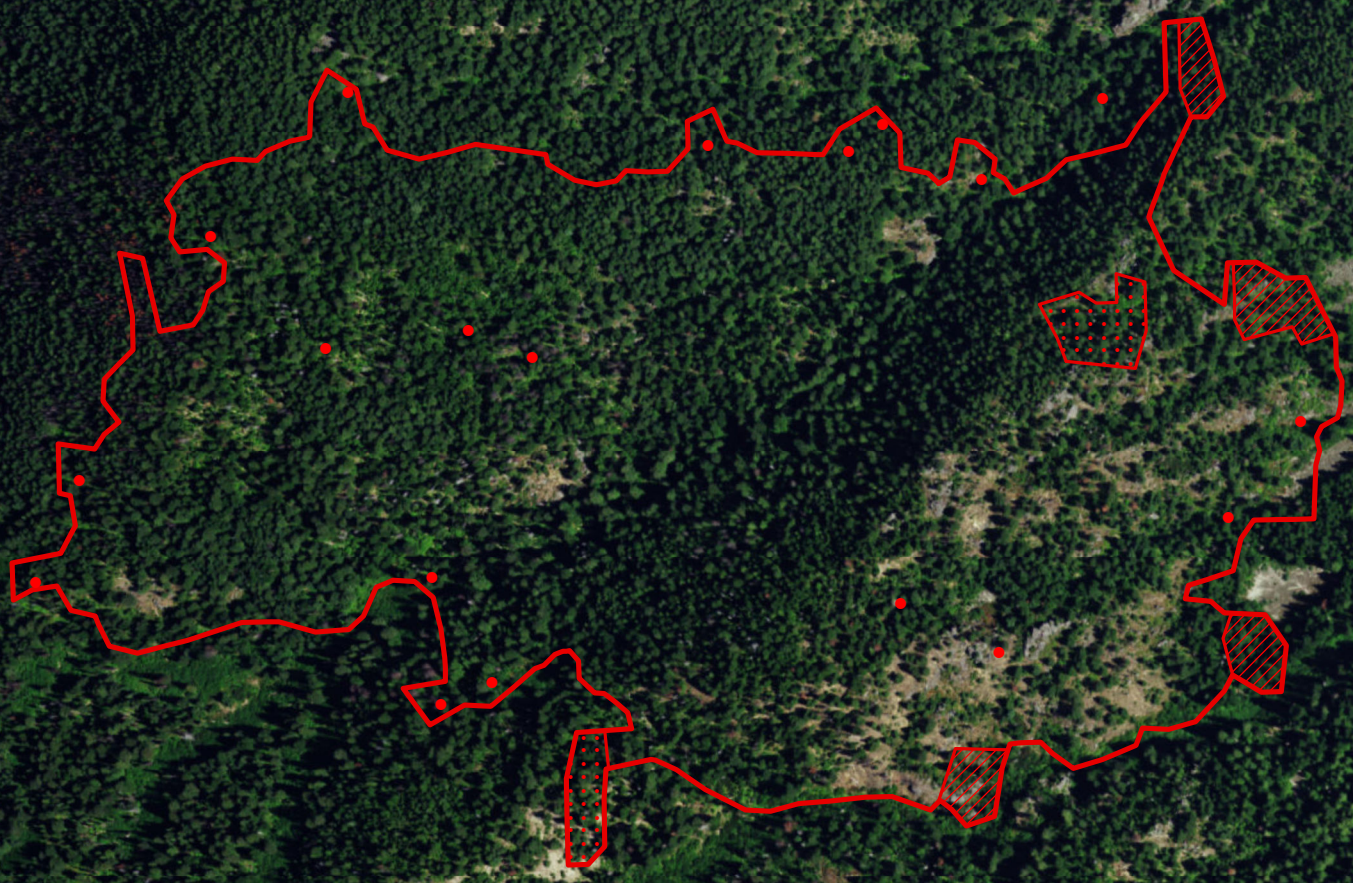


Heat Perimeter
 Intense Heat Areas
 Scattered Heat Areas
 Isolated Heat Sources

NAD 1983 California Teale Albers



Datum: NAD 83



Source: Esri, DigitalGlobe, GeoEye, Earthstar Geographics, CNES/Airbus DS, USDA, USGS, AEX, Getmapping, Aerogrid, IGN, IGP, swisstopo, and the GIS User Community

114°46'50"W

114°46'40"W

114°46'30"W

114°46'20"W

114°46'10"W

114°46'0"W

114°45'50"W