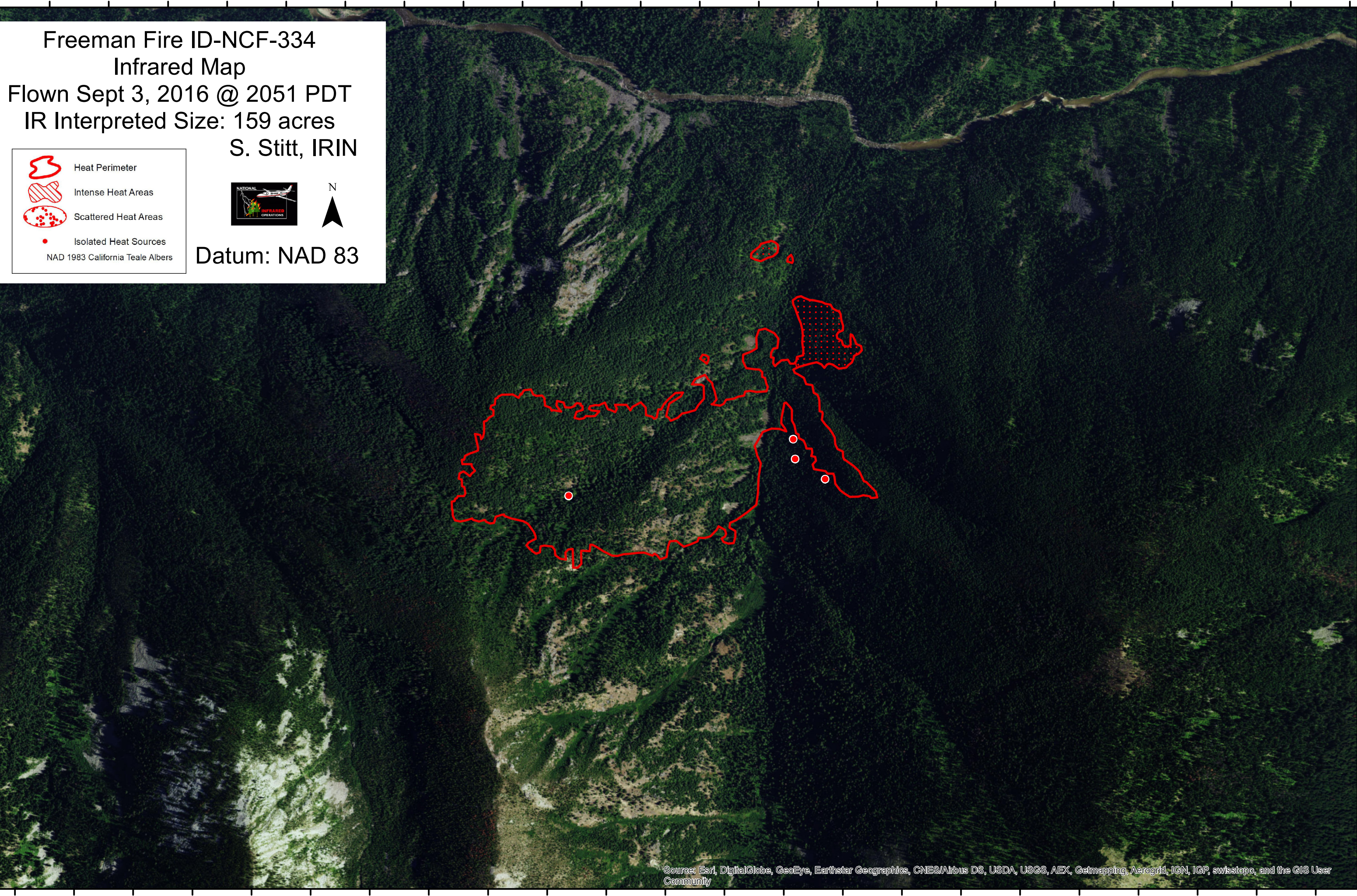


114°48'0"W 114°47'50"W 114°47'40"W 114°47'30"W 114°47'20"W 114°47'10"W 114°47'0"W 114°46'50"W 114°46'40"W 114°46'30"W 114°46'20"W 114°46'10"W 114°46'0"W 114°45'50"W 114°45'40"W 114°45'30"W 114°45'20"W 114°45'10"W 114°45'0"W 114°44'50"W 114°44'40"W 114°44'30"W 114°44'20"W







# Freeman Fire ID-NCF-334

## Infrared Map

Flown Sept 3, 2016 @ 2051 PDT

IR Interpreted Size: 159 acres

S. Stitt, IRIN

-  Heat Perimeter
  -  Intense Heat Areas
  -  Scattered Heat Areas
  -  Isolated Heat Sources
- NAD 1983 California Teale Albers



Datum: NAD 83

114°48'0"W 114°47'50"W 114°47'40"W 114°47'30"W 114°47'20"W 114°47'10"W 114°47'0"W 114°46'50"W 114°46'40"W 114°46'30"W 114°46'20"W 114°46'10"W 114°46'0"W 114°45'50"W 114°45'40"W 114°45'30"W 114°45'20"W 114°45'10"W 114°45'0"W 114°44'50"W 114°44'40"W 114°44'30"W 114°44'20"W

Source: Esri, DigitalGlobe, GeoEye, Earthstar Geographics, CNES/Airbus DS, USDA, USGS, AEX, Getmapping, Aerogrid, IGN, IGP, swisstopo, and the GIS User Community