

116°41'30"W 116°41'0"W 116°40'30"W 116°40'0"W 116°39'30"W 116°39'0"W 116°38'30"W 116°38'0"W 116°37'30"W 116°37'0"W 116°36'30"W 116°36'0"W




John Doe - ID-SJS-000482

Infrared Map

Flown August 28, 2016 @ 2006 hours PDT

IR Interpreted Size: 408 acres

S. Stitt, IRIN

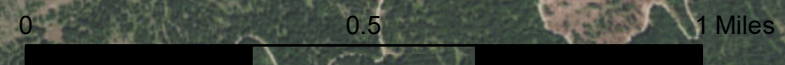
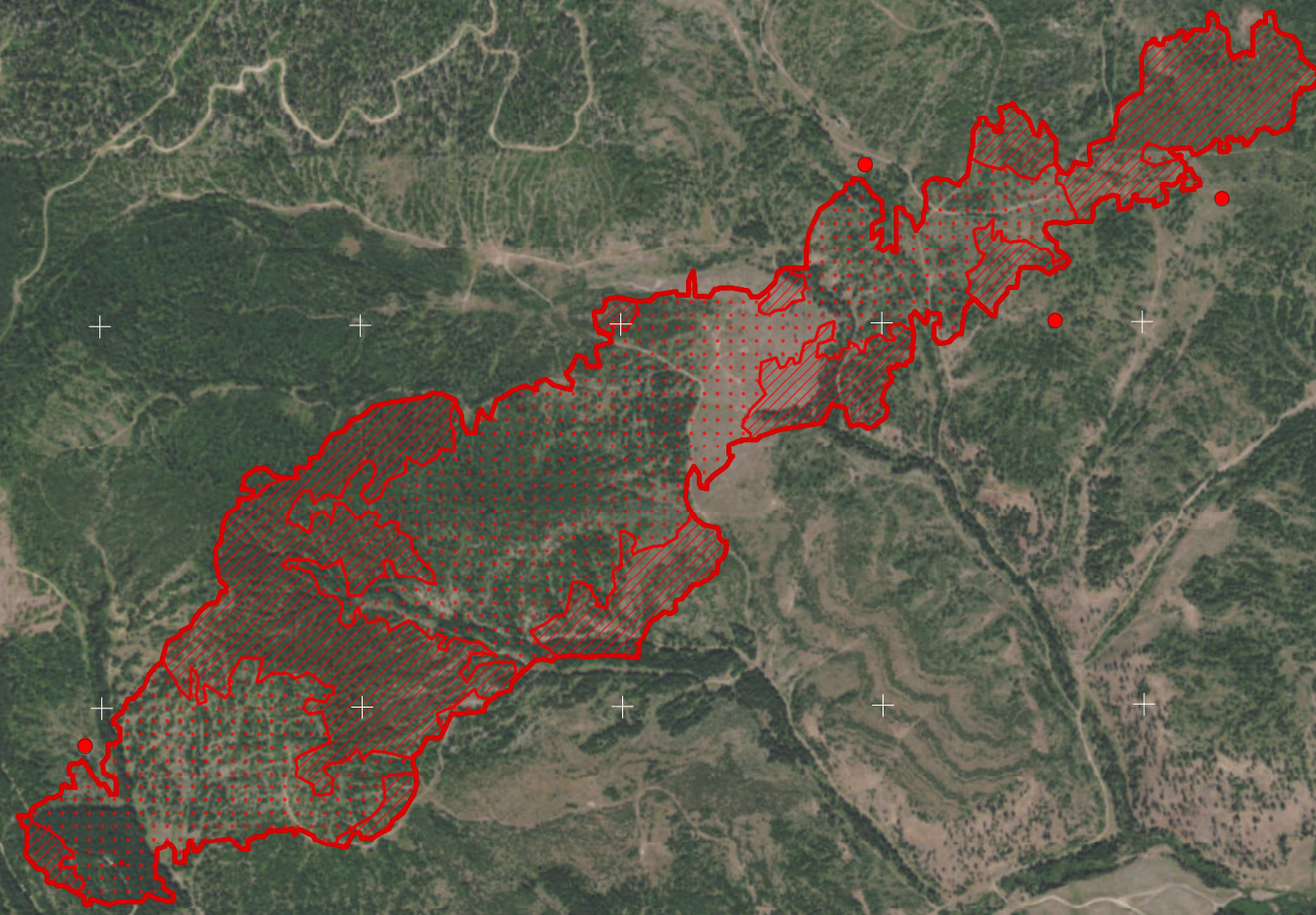
- Isolated Heat Sources
-  Scattered Heat
-  Intense Heat
-  Heat Perimeter

Datum: NAD83



47°12'30"N
47°12'0"N
47°11'30"N
47°11'0"N
47°10'30"N

47°12'0"N
47°11'30"N
47°11'0"N
47°10'30"N



116°41'30"W 116°41'0"W 116°40'30"W 116°40'0"W 116°39'30"W 116°39'0"W 116°38'30"W 116°38'0"W 116°37'30"W 116°37'0"W 116°36'30"W 116°36'0"W

Source: Esri, DigitalGlobe, GeoEye, Earthstar Geographics, CNES/Airbus DS, USDA, USGS, AEX, GeoEye, AeroGRID, IGN, 163, swisstopo, and the GIS User Community